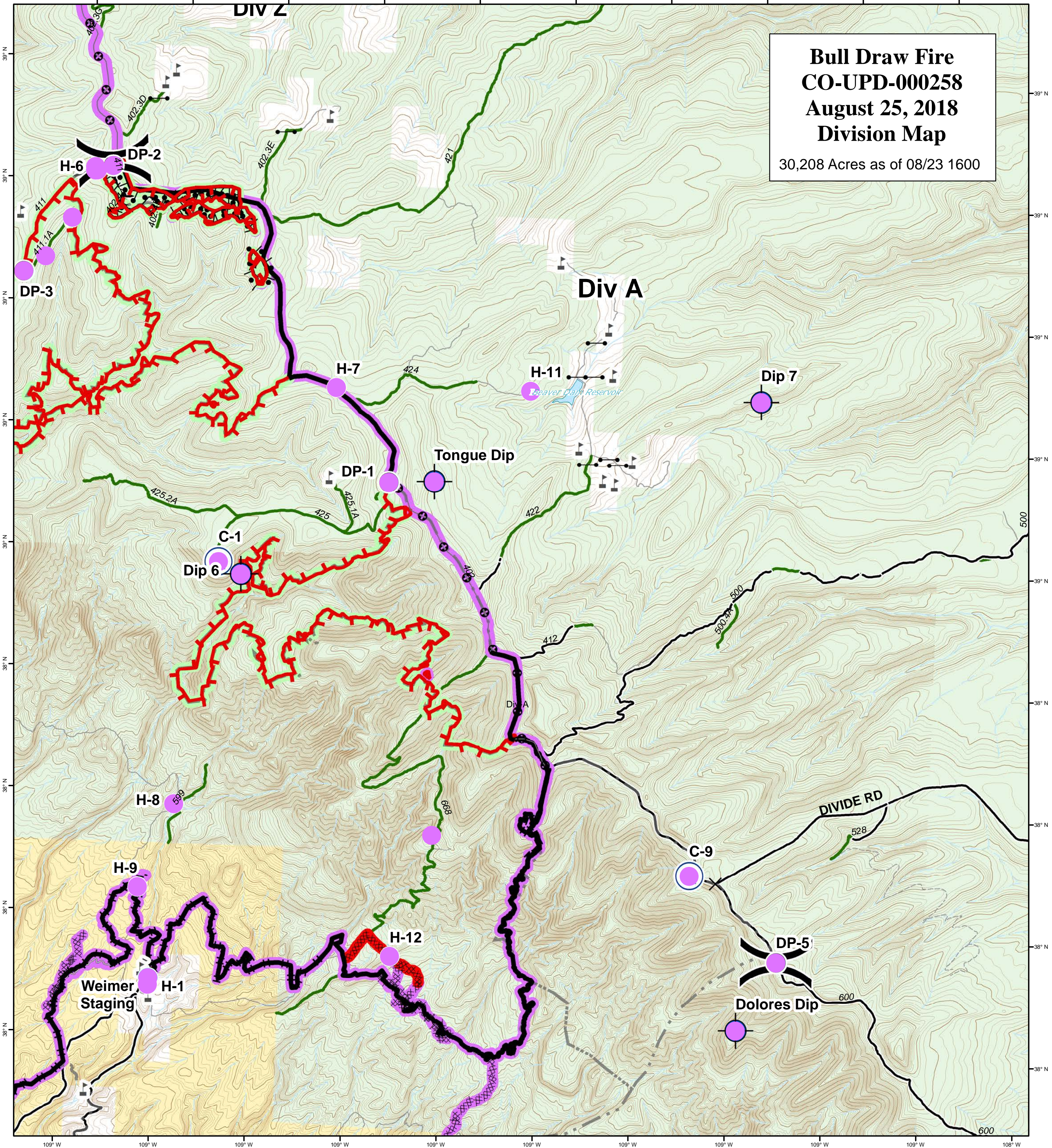
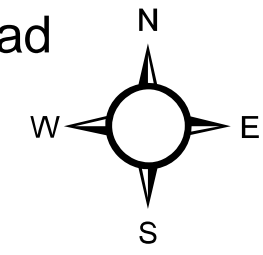


**Bull Draw Fire
CO-UPD-000258
August 25, 2018
Division Map**

30,208 Acres as of 08/23 1600



- | | | | | |
|--|--------------|--------------------|---|---------------------------------|
| ● Repair Needed | ✕ Closure | ⚙ Sling Site | ▬ Uncontrolled Fire Edge | — County roads |
| ○ No Repair Needed | ⊕ Dip Site | Ⓢ Staging Area | ▬ Completed Line | — USFS Routes |
| ● Unknown | ● Drop Point | Ⓜ Water Source | ▬ Completed Dozer Line | ▬ Wildfire Daily Fire Perimeter |
| ▬ Repair Needed | ● Helispot | Ⓜ Water Tank | ⋯ Completed Hand Line | ■ Bureau of Land Management |
| ○ No Repair Needed | ● Hot Spot |) (Division Break | ▬ Completed Burnout | □ Private |
| ▬ Unknown | Ⓜ Pump | | ⊕ Mastication | ■ US Forest Service |
| | Ⓜ Repeater | | ▬ Access or Improved Road | |



GISS: KMB
Date map produced: Aug 24, 2018
2155 hrs
UTM NAD83 Zone 13N