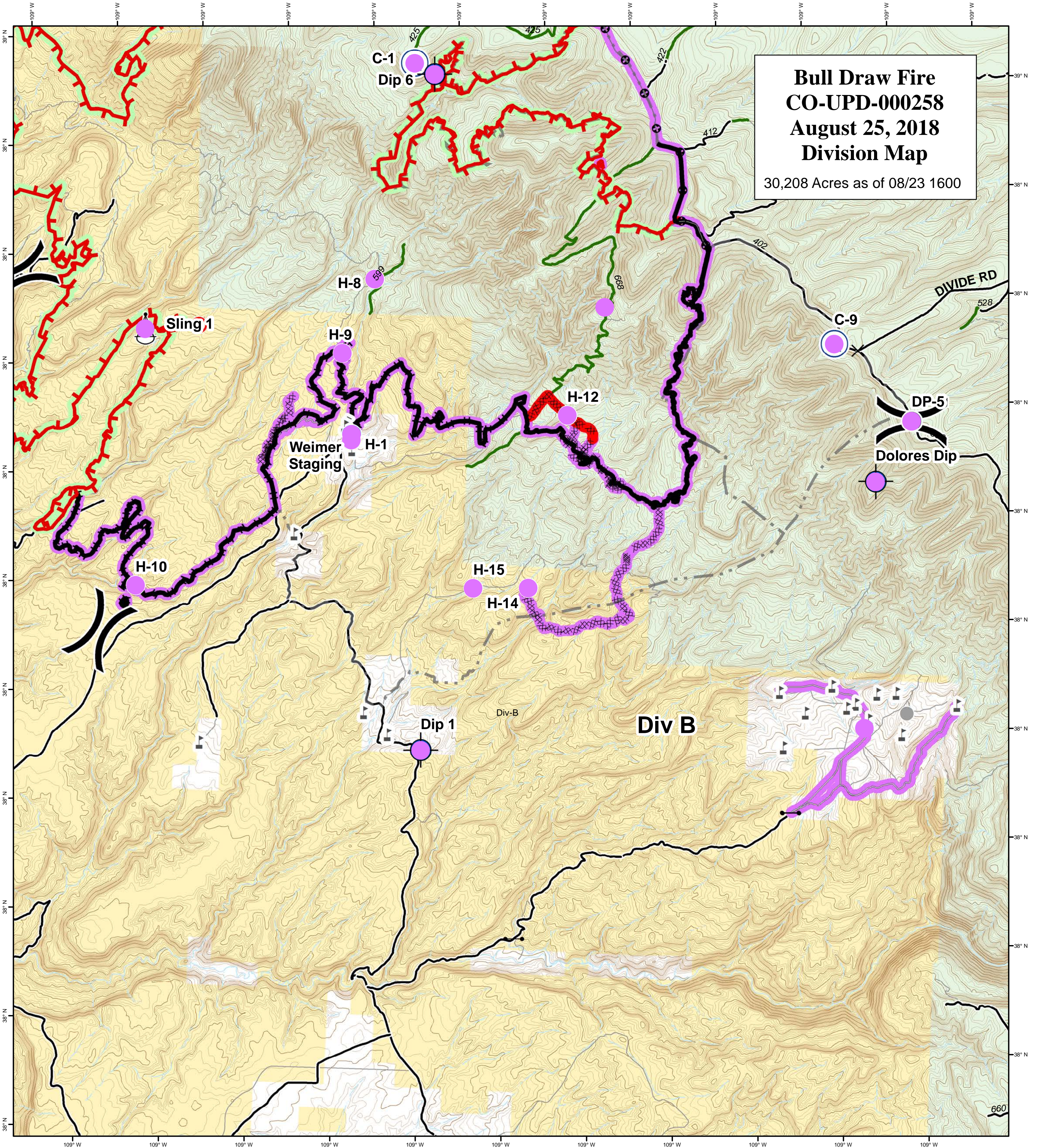
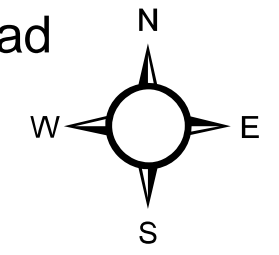


# Bull Draw Fire CO-UPD-000258 August 25, 2018 Division Map

30,208 Acres as of 08/23 1600



- |                                                  |              |                    |                                                           |                                 |
|--------------------------------------------------|--------------|--------------------|-----------------------------------------------------------|---------------------------------|
| <span style="color: red;">●</span> Repair Needed | ✕ Closure    | 📍 Sling Site       | <span style="color: red;">▬</span> Uncontrolled Fire Edge | — County roads                  |
| ○ No Repair Needed                               | ⊕ Dip Site   | Ⓢ Staging Area     | ▬ Completed Line                                          | — USFS Routes                   |
| ● Unknown                                        | ● Drop Point | Ⓜ Water Source     | ▬ Completed Dozer Line                                    | ▬ Wildfire Daily Fire Perimeter |
| <span style="color: red;">▬</span> Repair Needed | ● Helispot   | Ⓜ Water Tank       | ▬ Completed Hand Line                                     | ■ Bureau of Land Management     |
| ○ No Repair Needed                               | ● Hot Spot   | ) ( Division Break | ▬ Completed Burnout                                       | □ Private                       |
| <span style="color: purple;">▬</span> Unknown    | Ⓟ Pump       |                    | ⊕ Mastication                                             | ■ US Forest Service             |
|                                                  | Ⓡ Repeater   |                    | ▬ Access or Improved Road                                 |                                 |



GISS: KMB  
Date map produced: Aug 24, 2018  
2157 hrs  
UTM NAD83 Zone 13N