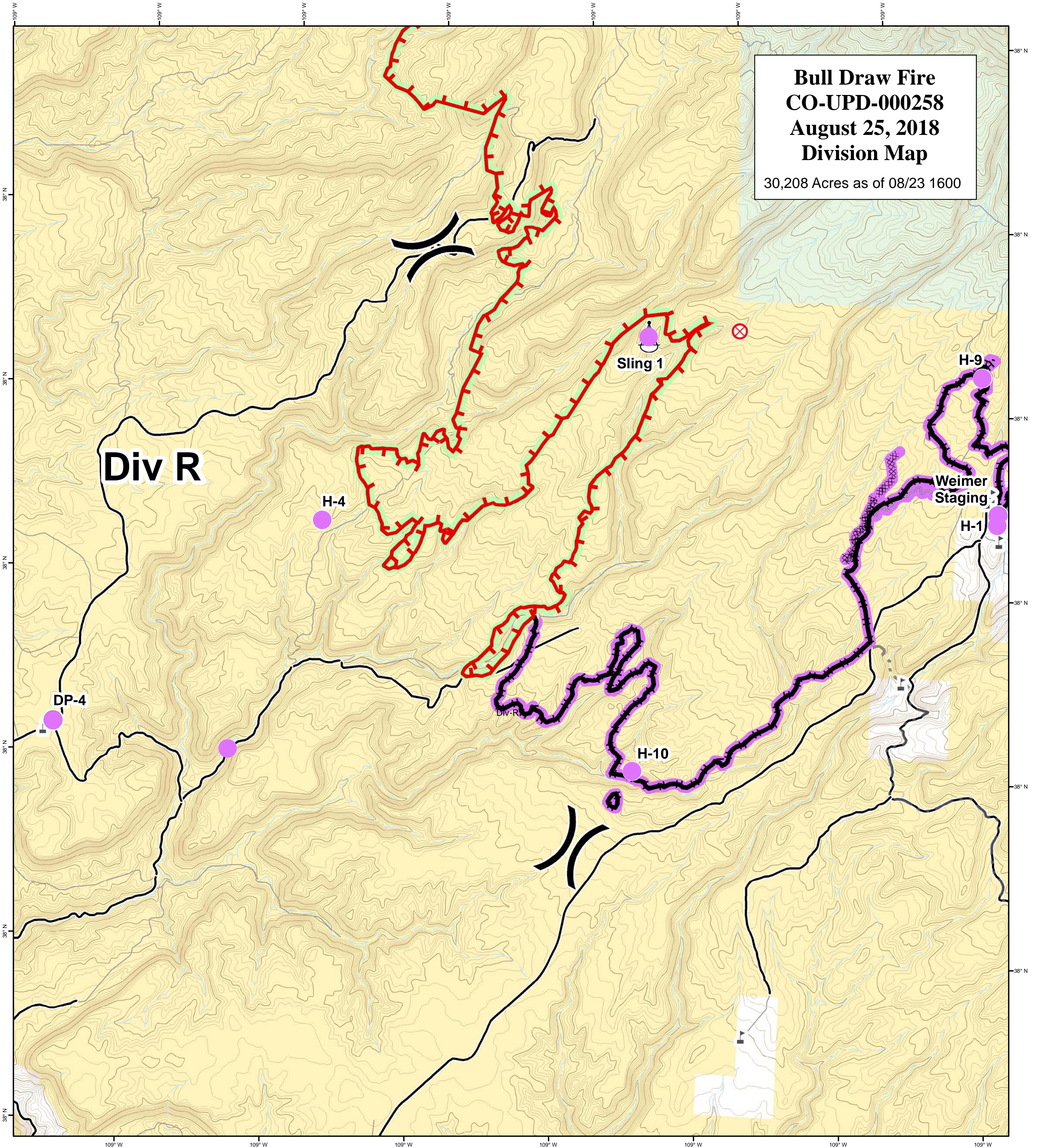


Bull Draw Fire
CO-UPD-000258
August 25, 2018
Division Map
 30,208 Acres as of 08/23 1600



Repair Needed	Closure	Sling Site	Uncontrolled Fire Edge	County roads
No Repair Needed	Dip Site	Staging Area	Completed Line	USFS Routes
Unknown	Drop Point	Water Source	Completed Dozer Line	Wildfire Daily Fire Perimeter
Repair Needed	Helispot	Water Tank	Completed Hand Line	Bureau of Land Management
No Repair Needed	Hot Spot	Division Break	Completed Burnout	Private
Unknown	Pump		Mastication	US Forest Service
	Repeater		Access or Improved Road	

0 1 2 4

W N E S

GISS: KMB
 Date map produced: Aug 24, 2018
 2:53 hrs
 UTM NAD83 Zone 12N
 6 Miles