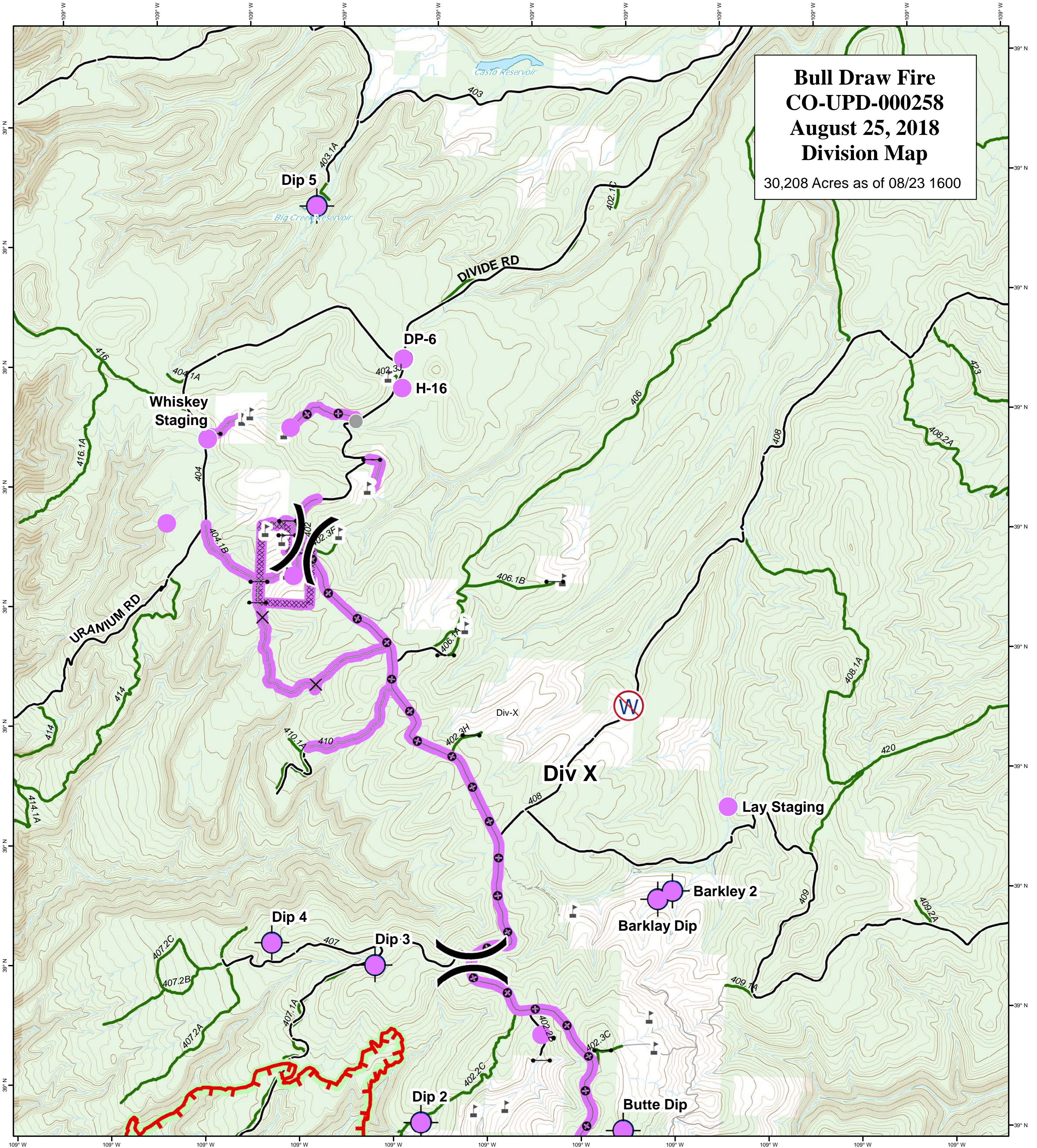
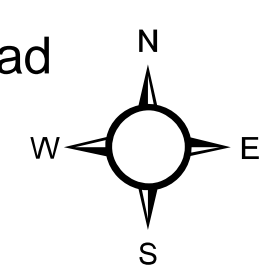


**Bull Draw Fire
CO-UPD-000258
August 25, 2018
Division Map**

30,208 Acres as of 08/23 1600



- | | | | | |
|--------------------|--------------|--------------------|---------------------------|---------------------------------|
| ● Repair Needed | ✕ Closure | ⚙ Sling Site | — Uncontrolled Fire Edge | — County roads |
| ○ No Repair Needed | ⊕ Dip Site | Ⓢ Staging Area | — Completed Line | — USFS Routes |
| ● Unknown | ● Drop Point | Ⓜ Water Source | ⊗ Completed Dozer Line | ▭ Wildfire Daily Fire Perimeter |
| — Repair Needed | ● Helispot | Ⓜ Water Tank | ⋯ Completed Hand Line | ▭ Bureau of Land Management |
| — No Repair Needed | ● Hot Spot |) (Division Break | ⊙ Completed Burnout | ▭ Private |
| — Unknown | Ⓟ Pump | | ⊕ Mastication | ▭ US Forest Service |
| | Ⓡ Repeater | | — Access or Improved Road | |



GISS: KMB
Date map produced: Aug 24, 2018
2151 hrs
UTM NAD83 Zone 13N