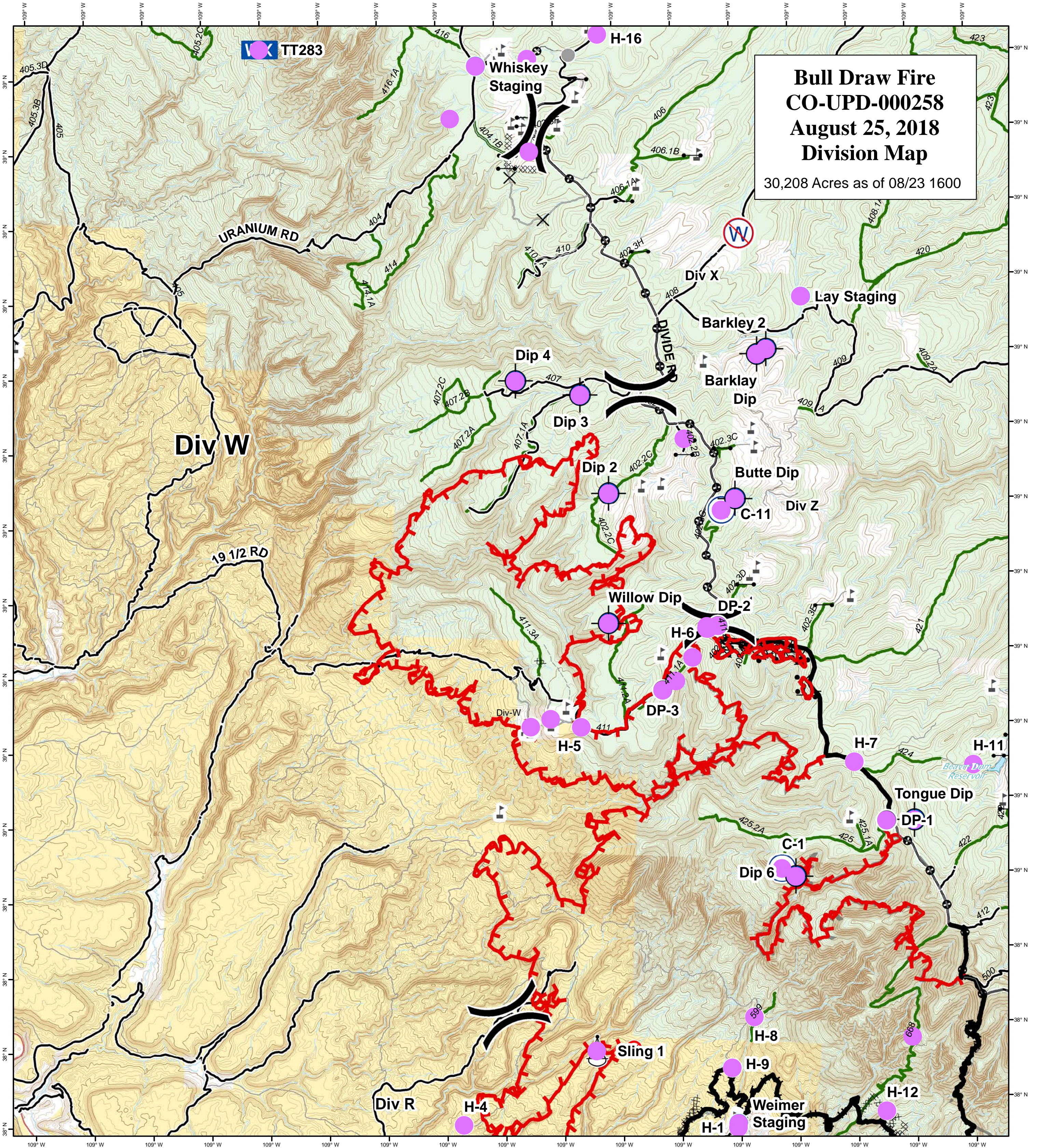
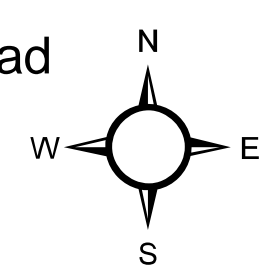


# Bull Draw Fire CO-UPD-000258 August 25, 2018 Division Map

30,208 Acres as of 08/23 1600



- |                  |            |                |                         |                               |
|------------------|------------|----------------|-------------------------|-------------------------------|
| Repair Needed    | Closure    | Sling Site     | Uncontrolled Fire Edge  | County roads                  |
| No Repair Needed | Dip Site   | Staging Area   | Completed Line          | USFS Routes                   |
| Unknown          | Drop Point | Water Source   | Completed Dozer Line    | Wildfire Daily Fire Perimeter |
| Repair Needed    | Helispot   | Water Tank     | Completed Hand Line     | Bureau of Land Management     |
| No Repair Needed | Hot Spot   | Division Break | Completed Burnout       | Private                       |
| Unknown          | Pump       |                | Mastication             | US Forest Service             |
|                  | Repeater   |                | Access or Improved Road |                               |



GISS: KMB  
Date map produced: Aug 24, 2018  
2215 hrs  
UTM NAD83 Zone 13N