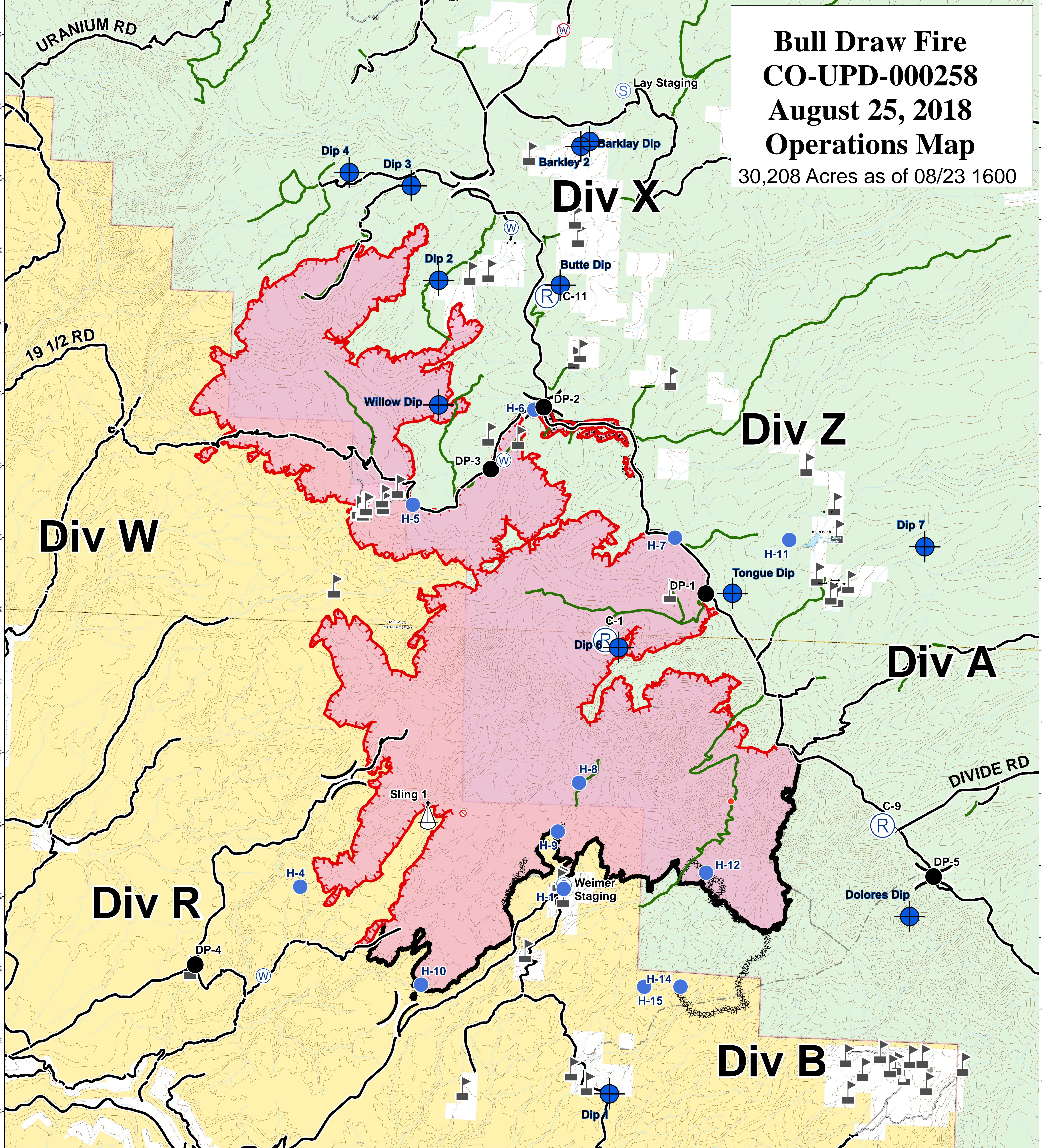
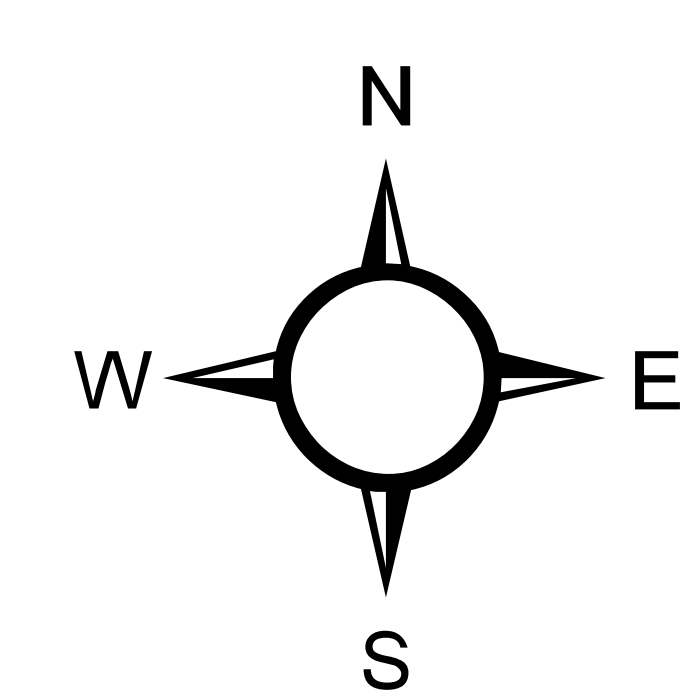
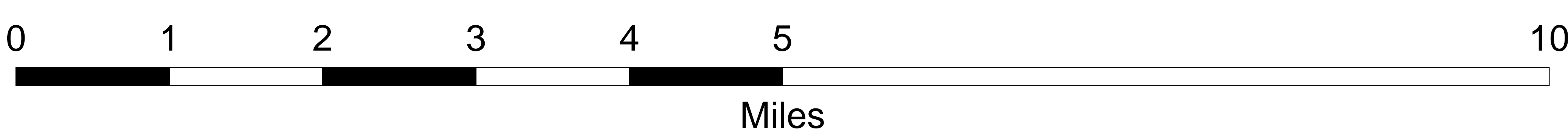


# Bull Draw Fire CO-UPD-000258 August 25, 2018 Operations Map

30,208 Acres as of 08/23 1600



- |               |                  |                           |                |                                 |
|---------------|------------------|---------------------------|----------------|---------------------------------|
| × Closure     | Ⓡ Repeater       | — Uncontrolled Fire Edge  | — County roads | ■ Wildfire Daily Fire Perimeter |
| ● Dip Site    | ⚙ Sling Site     | — Completed Line          | — USFS Routes  | ■ Bureau of Land Management     |
| ● Drop Point  | Ⓢ Staging Area   | ⊘ Completed Dozer Line    | — Private      | ■ US Forest Service             |
| ⊗ Fire Origin | Ⓜ Water Source   | ⋯ Completed Hand Line     |                |                                 |
| ● Helispot    | Ⓜ Water Tank     | ⊙ Masticated              |                |                                 |
| ● Hot Spot    | ⌋ Division Break | — Access or Improved Road |                |                                 |



GIS: KMB  
Date map produced: Aug 24, 2018  
2238 hrs  
UTM NAD83 Zone 13N