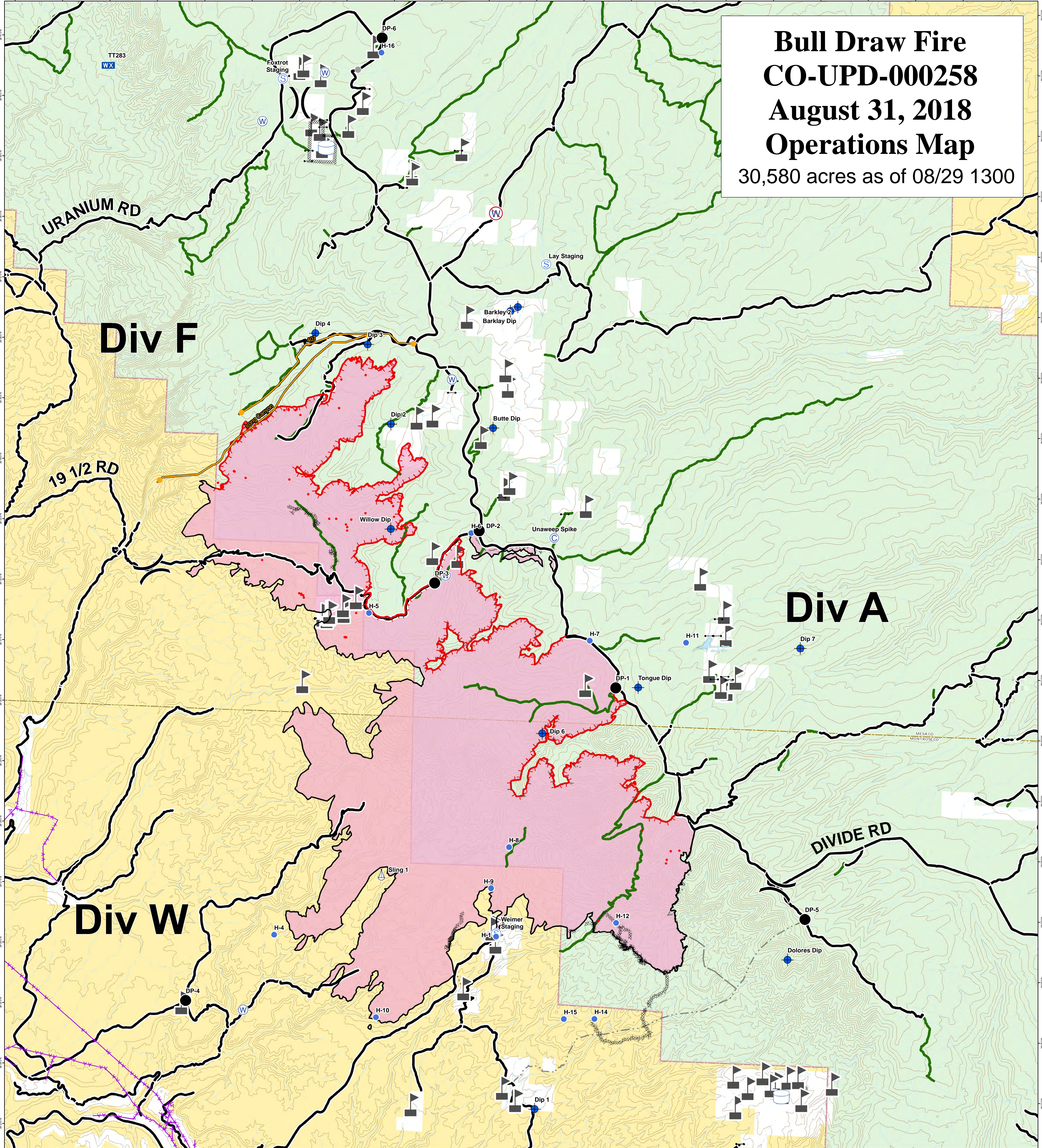


Bull Draw Fire CO-UPD-000258 August 31, 2018 Operations Map

30,580 acres as of 08/29 1300



- Hot Spot 8/29 1303
- ⊙ Camp
- × Closure
- ⊕ Dip Site
- Drop Point
- ⊗ Fire Origin
- Helispot
- ⚙ Sling Site
- Ⓢ Staging Area
- Ⓜ Water Source
- Ⓜ Water Tank
-) Division Break
- Uncontrolled Fire Edge
- Completed Line
- ⋯ Completed Dozer Line
- ⋯ Completed Hand Line
- ⋯ Road as Completed Line
- ⊖ Masticated
- ⋯ Fire Break Planned or Incomplete
- Access or Improved Road
- County roads
- USFS Routes
- ▭ Wildfire Daily Fire Perimeter
- ▨ Unburned Island
- ▭ Bureau of Land Management
- ▭ Private
- ▭ US Forest Service

