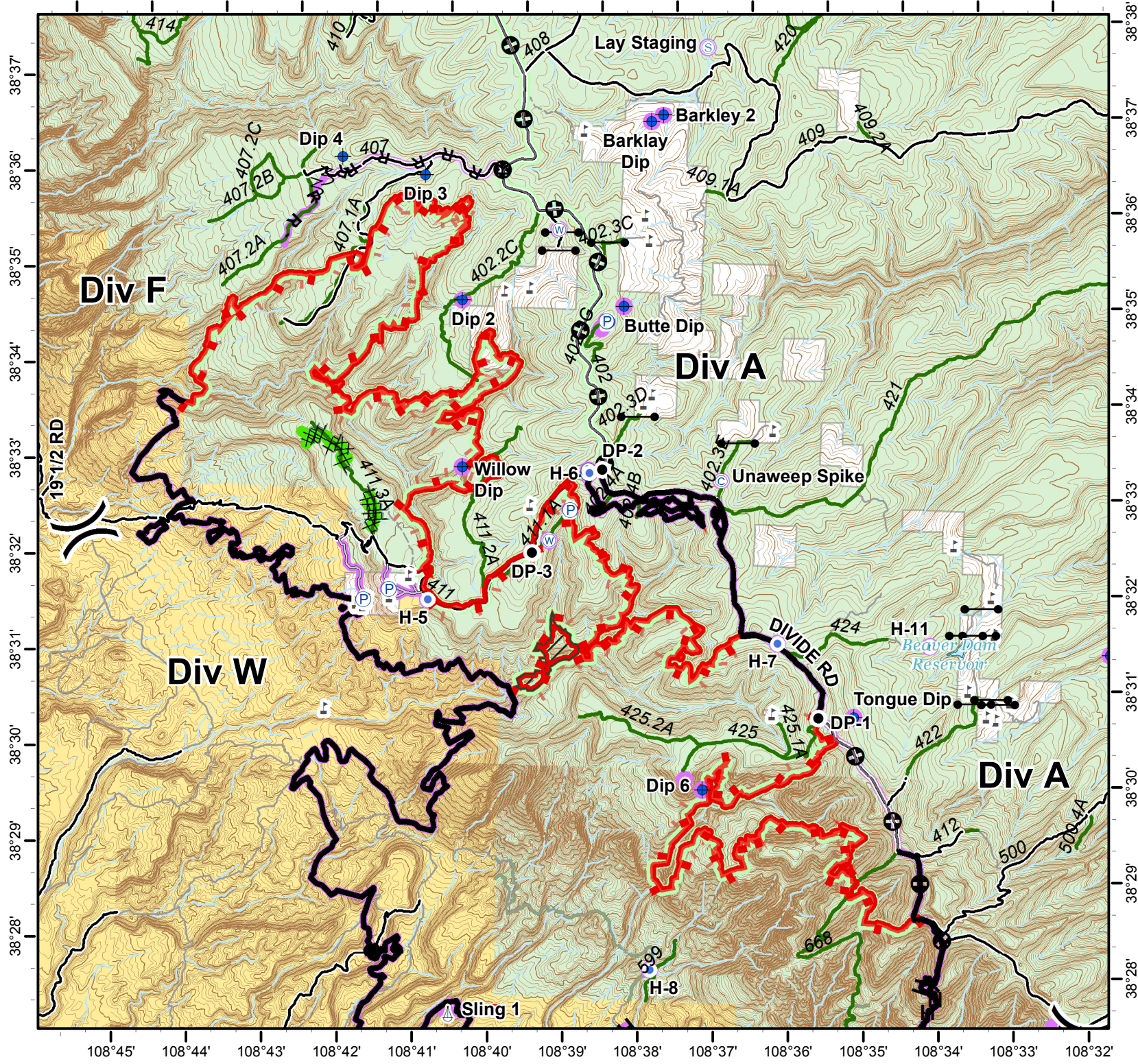
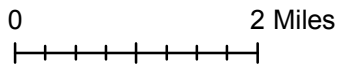
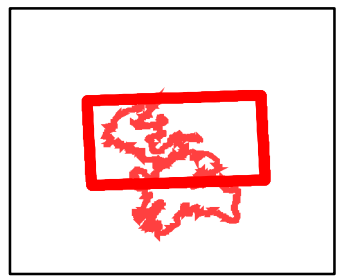


108°46' 108°45' 108°44' 108°43' 108°42' 108°41' 108°40' 108°39' 108°38' 108°37' 108°36' 108°35' 108°34' 108°33'

**Bull Draw Fire**  
**CO-UPD-000258**  
**August 31, 2018**  
**Central**  
30,580 acres as of 8/29 1303



- No Repair Needed
- Unknown
- Completed - Inspected
- No Repair Needed
- Unknown
- Camp
- Dip Site
- Drop Point
- Helispot
- Pump
- Water Source
- Division Break
- Uncontrolled Fire Edge
- Completed Line
- Completed Dozer Line
- R - RRoad as Completed Line
- Fire Break Planned or Incomplete
- Mastication
- Access or Improved Road
- County roads
- USFS Routes
- Bureau of Land Management
- US Forest Service
- Private



38°37'  
38°36'  
38°35'  
38°34'  
38°33'  
38°32'  
38°31'  
38°30'  
38°29'  
38°28'

38°38'  
38°37'  
38°36'  
38°35'  
38°34'  
38°33'  
38°32'  
38°31'  
38°30'  
38°29'  
38°28'

108°45' 108°44' 108°43' 108°42' 108°41' 108°40' 108°39' 108°38' 108°37' 108°36' 108°35' 108°34' 108°33'