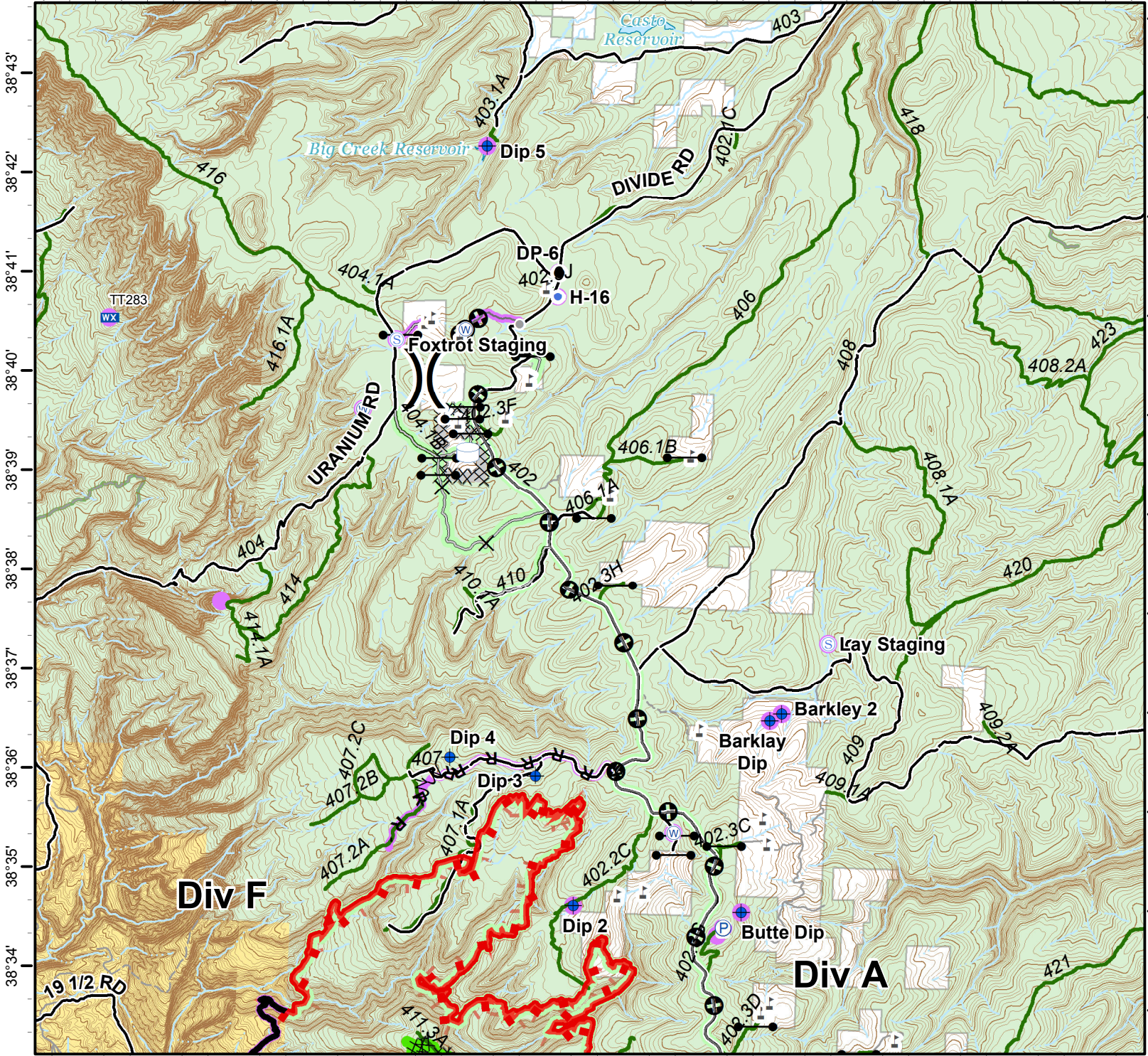
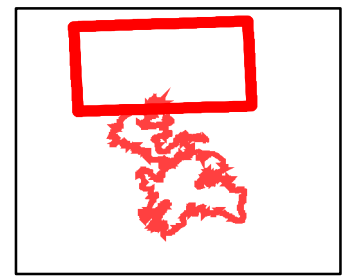


108°48' 108°47' 108°46' 108°45' 108°44' 108°43' 108°42' 108°41' 108°40' 108°39' 108°38' 108°37' 108°36' 108°35' 108°34'

Bull Draw Fire
CO-UPD-000258
August 31, 2018
North
 30,580 acres as of 8/29 1303



- No Repair Needed
- Unknown
- No Repair Needed
- Other - See Comments
- Unknown
- X Closure
- Dip Site
- Drop Point
- Helispot
- Mobile Weather Unit
- Staging Area
- Water Source
- Water Tank
- Division Break
- Uncontrolled Fire Edge
- Completed Dozer Line
- R - RRoad as Completed Line
- Fire Break Planned or Incomplete
- Mastication
- Access or Improved Road
- County roads
- USFS Routes
- Bureau of Land Management
- US Forest Service
- Private



108°47' 108°46' 108°45' 108°44' 108°43' 108°42' 108°41' 108°40' 108°39' 108°38' 108°37' 108°36' 108°35' 108°34'