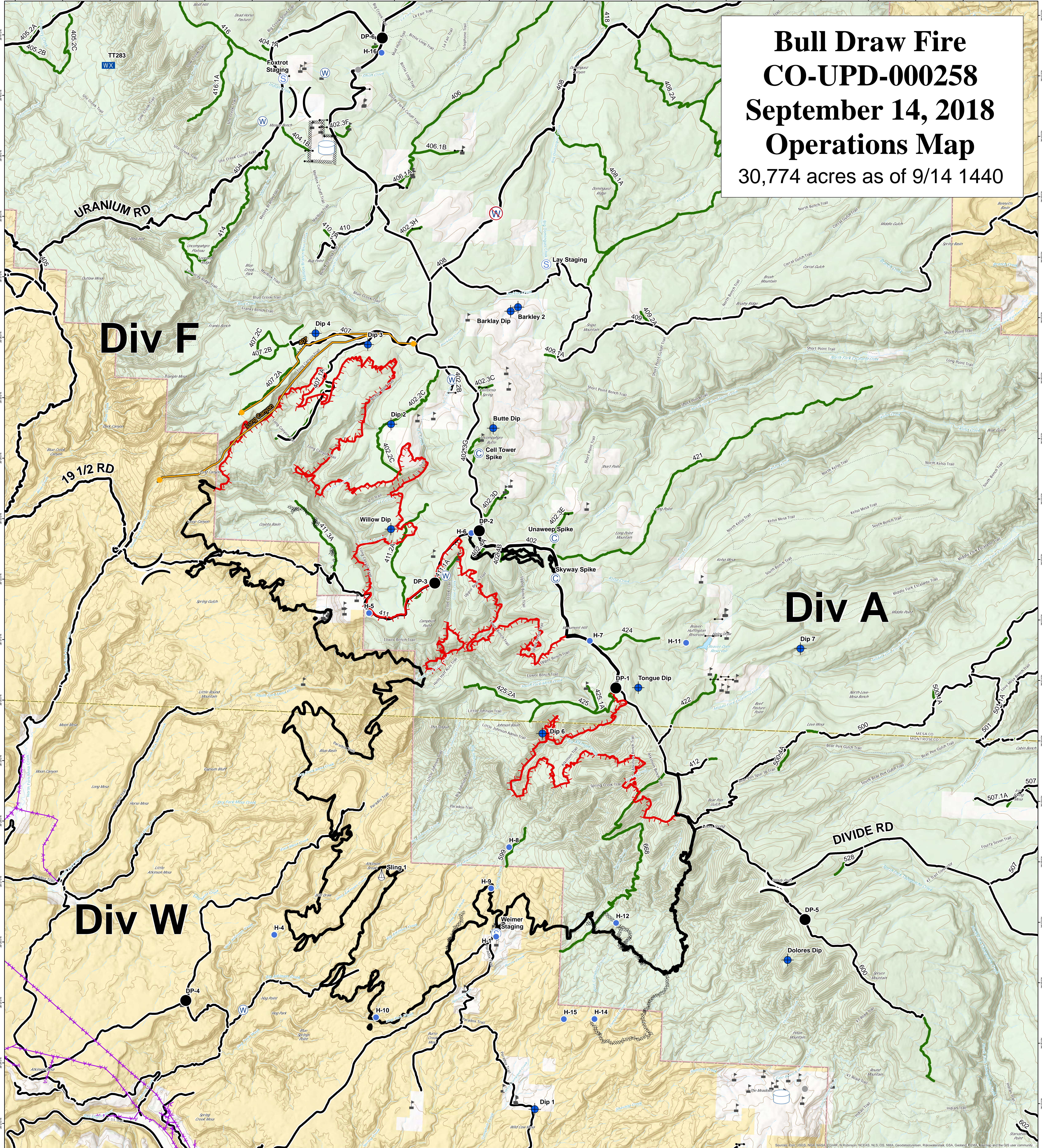


Bull Draw Fire CO-UPD-000258 September 14, 2018 Operations Map

30,774 acres as of 9/14 1440



- Gate
- Value at Risk
- Camp
- × Closure
- ◆ Dip Site
- Drop Point
- ⊗ Fire Origin
- Helispot
- △ Sling Site
- Ⓢ Staging Area
- Ⓜ Water Source
- Ⓜ Water Tank
-) Division Break
- Uncontrolled Fire Edge
- Completed Line
- Completed Dozer Line
- - - Completed Hand Line
- R - R - R Road as Completed Line
- Masticated
- Fire Break Planned or Incomplete
- Management Action Point
- Access or Improved Road
- County roads
- USFS Routes
- Wildfire Daily Fire Perimeter
- Unburned Island
- Bureau of Land Management
- Private
- US Forest Service

