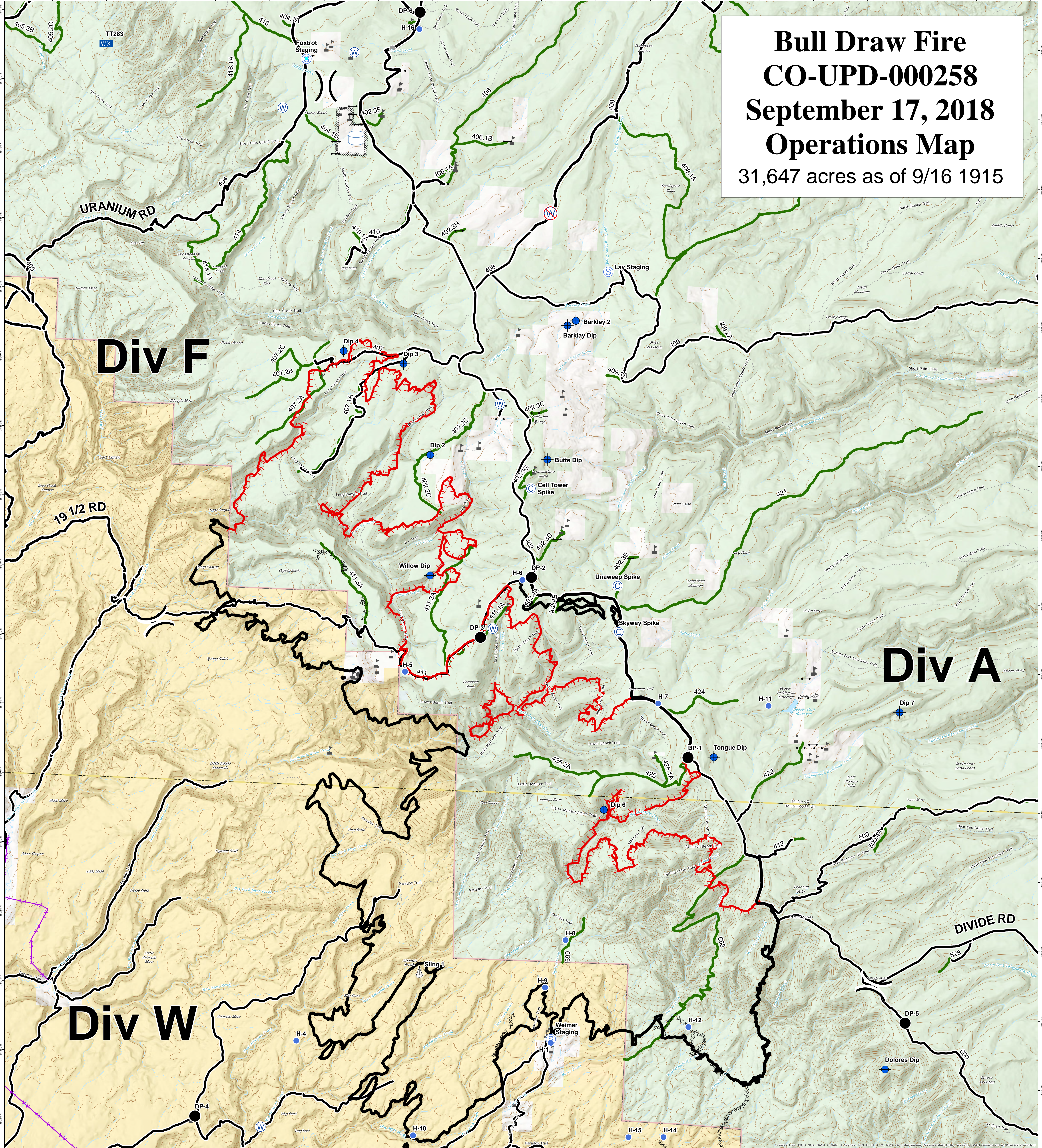


Bull Draw Fire CO-UPD-000258 September 17, 2018 Operations Map 31,647 acres as of 9/16 1915



- | | | | | |
|--|---|---|---|---|
| <ul style="list-style-type: none"> — Gate ▲ Value at Risk ⊙ Camp × Closure ◆ Dip Site ● Drop Point | <ul style="list-style-type: none"> ⊗ Fire Origin ● Helispot ▲ Sling Site Ⓢ Staging Area Ⓜ Water Source Ⓜ Water Tank) (Division Break | <ul style="list-style-type: none"> — Uncontrolled Fire Edge — Completed Line ⊘ Completed Dozer Line — Completed Hand Line — Road as Completed Line | <ul style="list-style-type: none"> ⊙ Masticated — Fire Break Planned or Incomplete — Management Action Point — Access or Improved Road — County roads — USFS Routes | <ul style="list-style-type: none"> — Wildfire Daily Fire Perimeter ▨ Unburned Island — Bureau of Land Management □ Private — US Forest Service |
|--|---|---|---|---|

