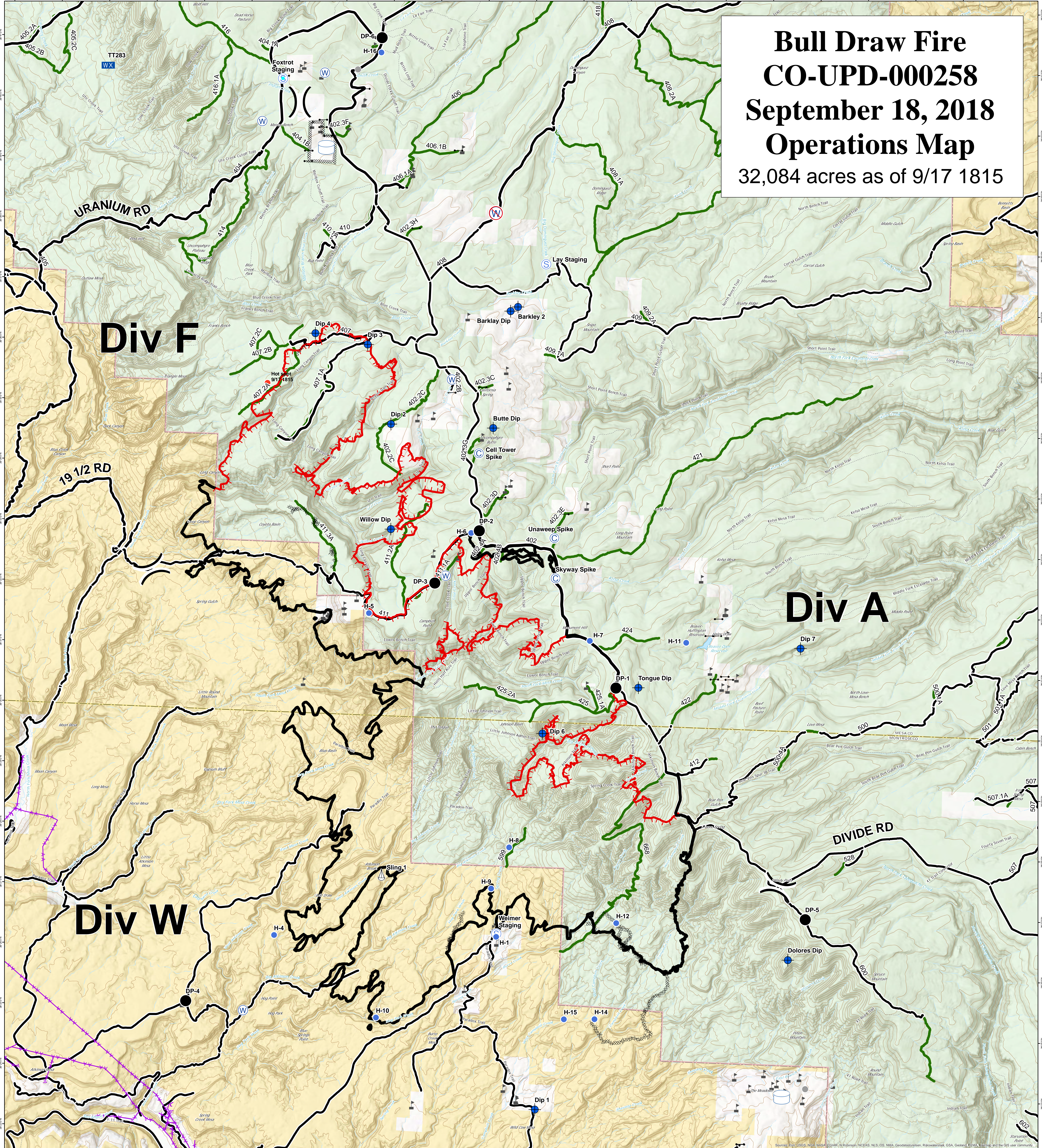


Bull Draw Fire CO-UPD-000258 September 18, 2018 Operations Map 32,084 acres as of 9/17 1815



- Gate
- Helispot
- Uncontrolled Fire Edge
- Masticated
- Value at Risk
- Hot Spot
- Completed Line
- Fire Break Planned or Incomplete
- ⊙ Camp
- ▲ Sling Site
- ⊘ Completed Dozer Line
- Management Action Point
- × Closure
- ⊙ Staging Area
- Completed Hand Line
- Access or Improved Road
- Dip Site
- ⊙ Water Source
- Road as Completed Line
- Private
- Drop Point
- ⊙ Water Tank
- USFS Routes
- Fire Origin
-) Division Break
- Wildfire Daily Fire Perimeter
- ▨ Unburned Island
- Bureau of Land Management
- US Forest Service

