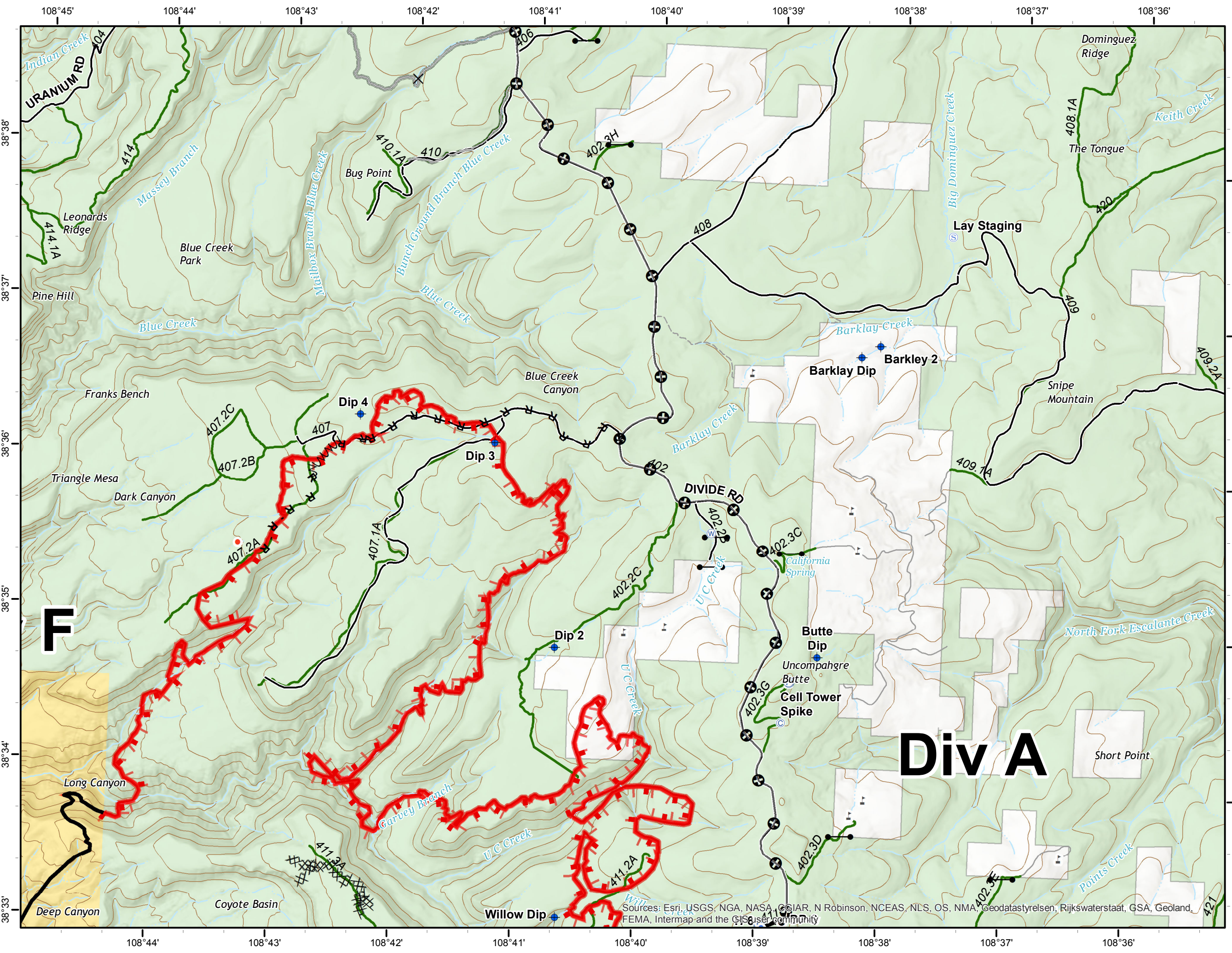
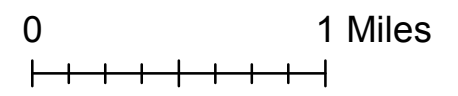
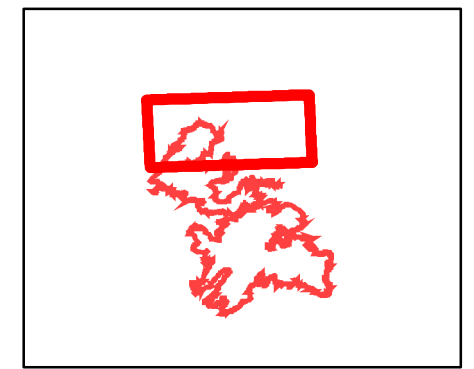
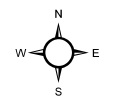


**Bull Draw Fire**  
**CO-UPD-000258**  
**September 18, 2018**  
**North**  
 32,084 acres 9/17 18:15

- Camp
- Dip Site
- Hot Spot
- Pump
- Staging Area
- Water Source
- Uncontrolled Fire Edge
- Completed Line
- R - R Road as Completed Line
- Fire Break Planned or Incomplete
- Mastication
- Access or Improved Road
- County roads
- USFS Routes
- World Hillshade
- Bureau of Land Management
- US Forest Service
- Private



Sources: Esri, USGS, NGA, NASA, CGIAR, N Robinson, NCEAS, NLS, OS, NMA, Geodatastyrelsen, Rijkswaterstaat, GSA, Geoland, FEMA, Intermap and the GIS User community