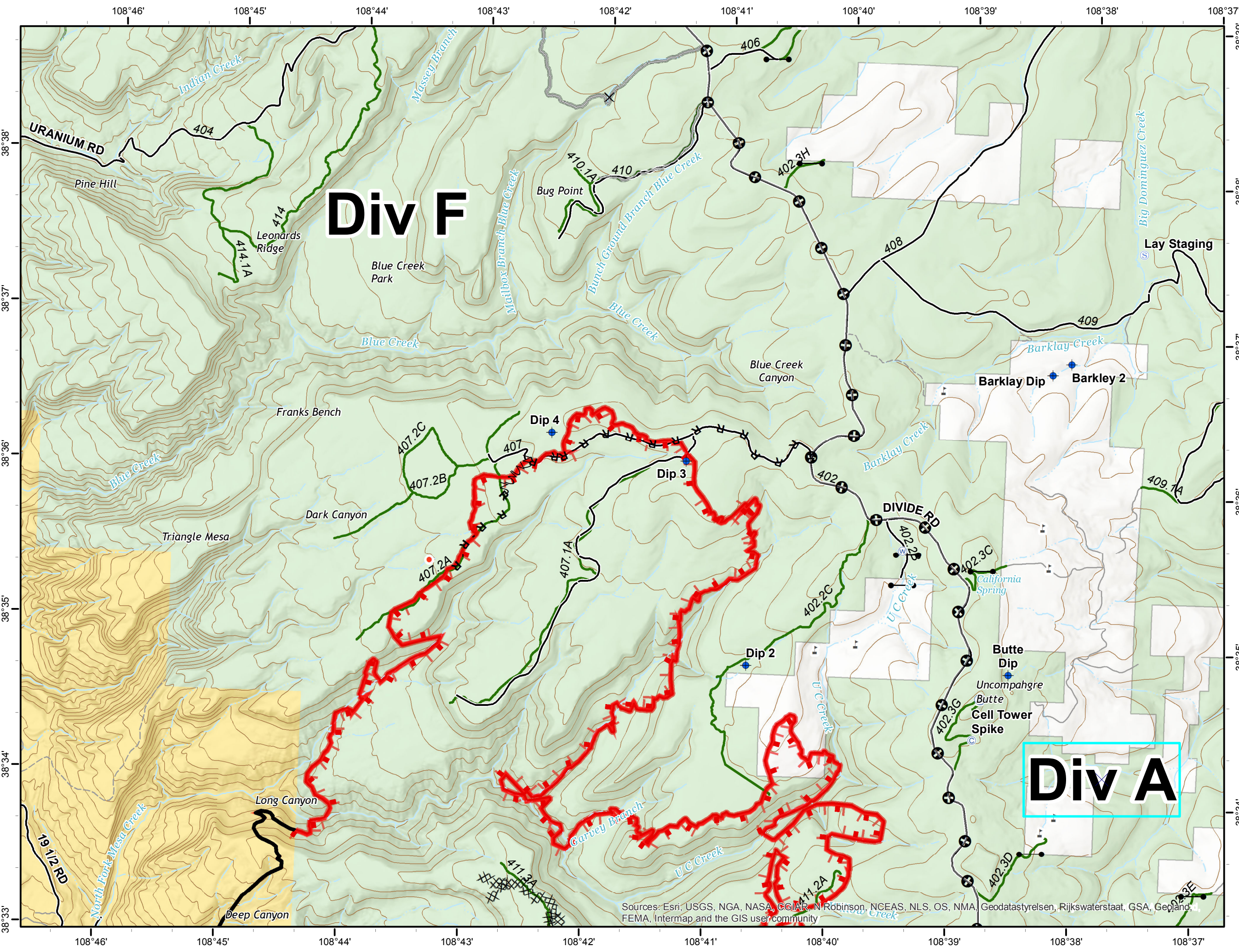
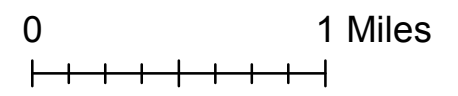
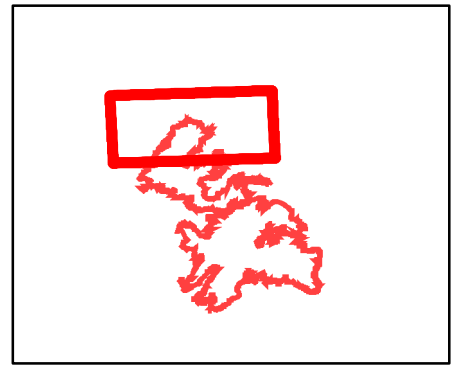
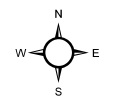


Bull Draw Fire
CO-UPD-000258
September 19, 2018
North
 32,545 acres as of 9/18 1650

- Camp
- Dip Site
- Hot Spot
- Pump
- Staging Area
- Water Source
- Uncontrolled Fire Edge
- R - R Road as Completed Line
- Fire Break Planned or Incomplete
- Mastication
- Access or Improved Road
- County roads
- USFS Routes
- World Hillshade
- Bureau of Land Management
- US Forest Service
- Private



Sources: Esri, USGS, NGA, NASA, CCIAR, N Robinson, NGEAS, NLS, OS, NMA, Geodatastyrelsen, Rijkswaterstaat, GSA, Geoland, FEMA, Intermap and the GIS user community