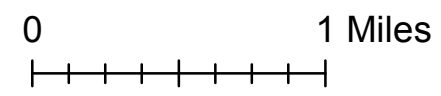
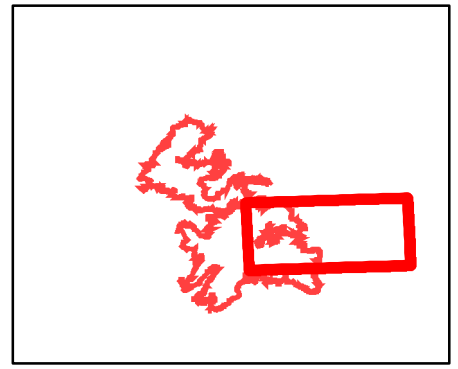
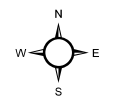
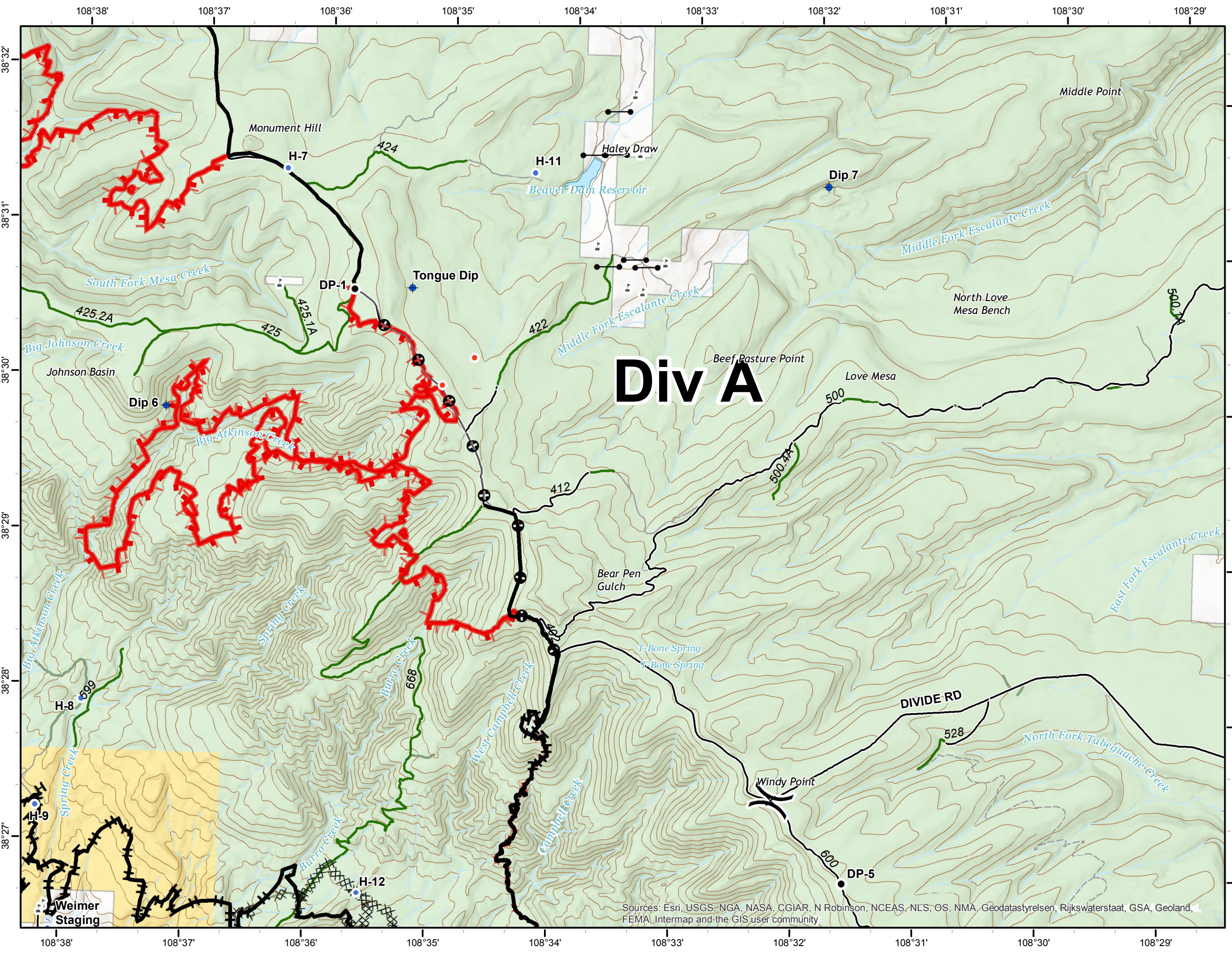


Bull Draw Fire
CO-UPD-000258
September 19, 2018
South
 32,545 acres as of 9/18 1650

- ◆ Dip Site
- Drop Point
- Helispot
- Hot Spot
-) Division Break
- └─┘ Uncontrolled Fire Edge
- Completed Line
- H - H Completed Hand Line
- ⊕ Mastication
- County roads
- USFS Routes
- World Hillshade
- Bureau of Land Management
- US Forest Service
- Private



Div A



Sources: Esri, USGS, NGA, NASA, CGIAR, N Robinson, NCEAS, NLS, OS, NMA, Geodatastyrelsen, Rijkswaterstaat, GSA, Geoland, FEMA, Intermap and the GIS user community

Weimer Staging