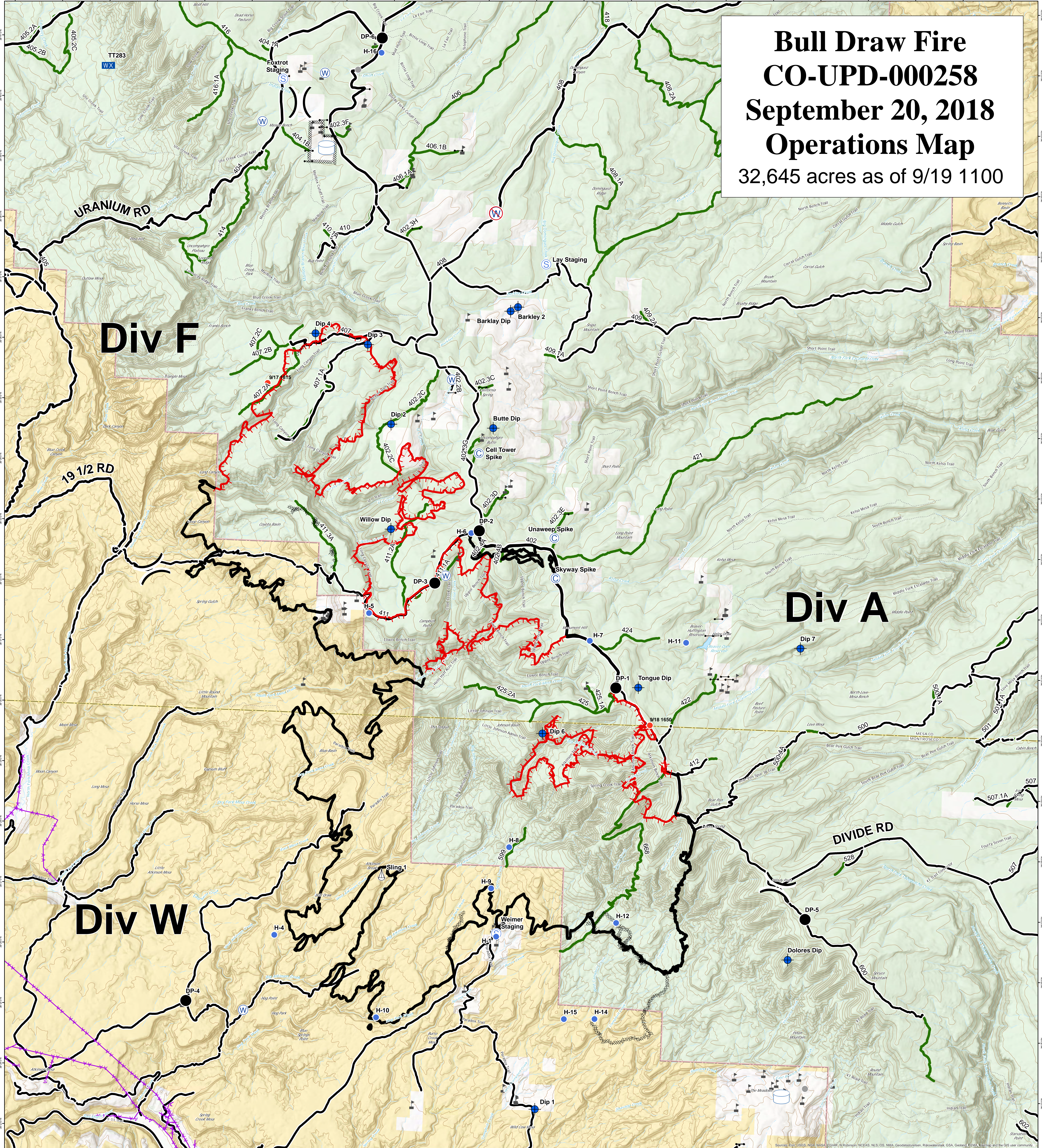


Bull Draw Fire CO-UPD-000258 September 20, 2018 Operations Map 32,645 acres as of 9/19 1100



- | | | | | |
|-----------------|------------------|--------------------------|------------------------------------|---------------------------------|
| — Gate | ● Helispot | — Uncontrolled Fire Edge | ○ Masticated | ■ Wildfire Daily Fire Perimeter |
| ▲ Value at Risk | ● Hot Spot | — Completed Line | — Fire Break Planned or Incomplete | ▨ Unburned Island |
| ⊙ Camp | ⚙ Sling Site | — Completed Dozer Line | — Management Action Point | ■ Bureau of Land Management |
| × Closure | Ⓢ Staging Area | — Completed Hand Line | — Access or Improved Road | □ Private |
| ● Dip Site | Ⓜ Water Source | — Road as Completed Line | — County roads | ■ US Forest Service |
| ● Drop Point | Ⓜ Water Tank | | — USFS Routes | |
| ⊗ Fire Origin |) Division Break | | | |

