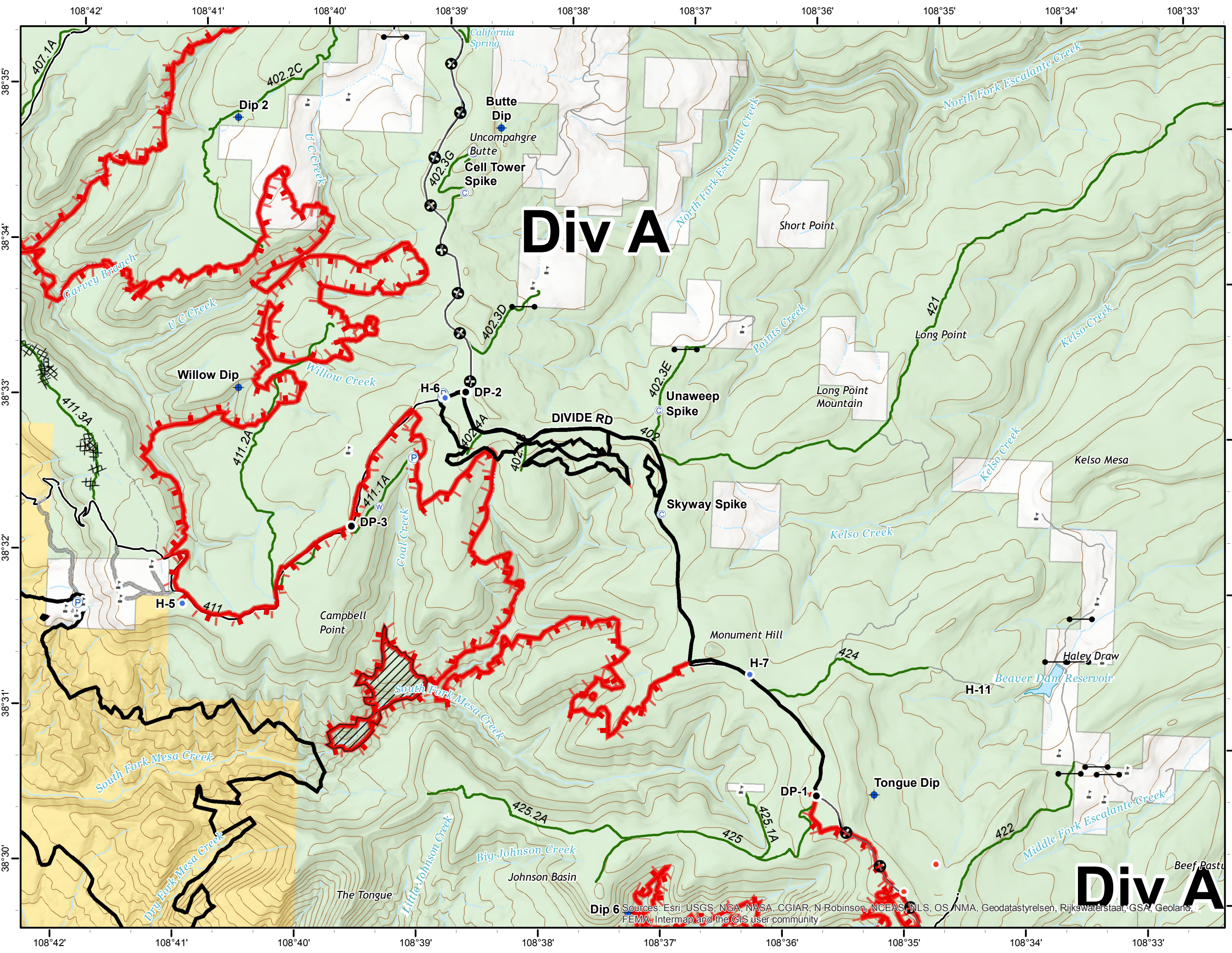
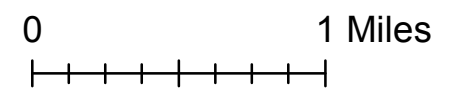
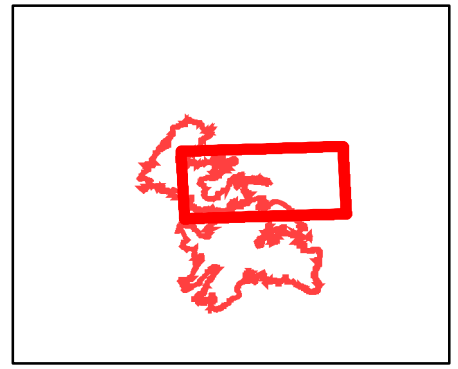
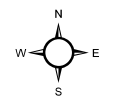


Bull Draw Fire
CO-UPD-000258
September 20, 2018
Central
 32,645 acres as of 9/19 1300

- Camp
- Dip Site
- Drop Point
- Helispot
- Pump
- Water Source
- Uncontrolled Fire Edge
- Completed Line
- Completed Dozer Line
- Mastication
- Access or Improved Road
- County roads
- USFS Routes
- World Hillshade
- Bureau of Land Management
- US Forest Service
- Private



Sources: Esri, USGS, NGA, NASA, CGIAR, N Robinson, NCEAS, NLS, OS, NMA, Geodatastyrelsen, Rijkswaterstaat, GSA, Geoland, FEMA, Intermap and the GIS user community