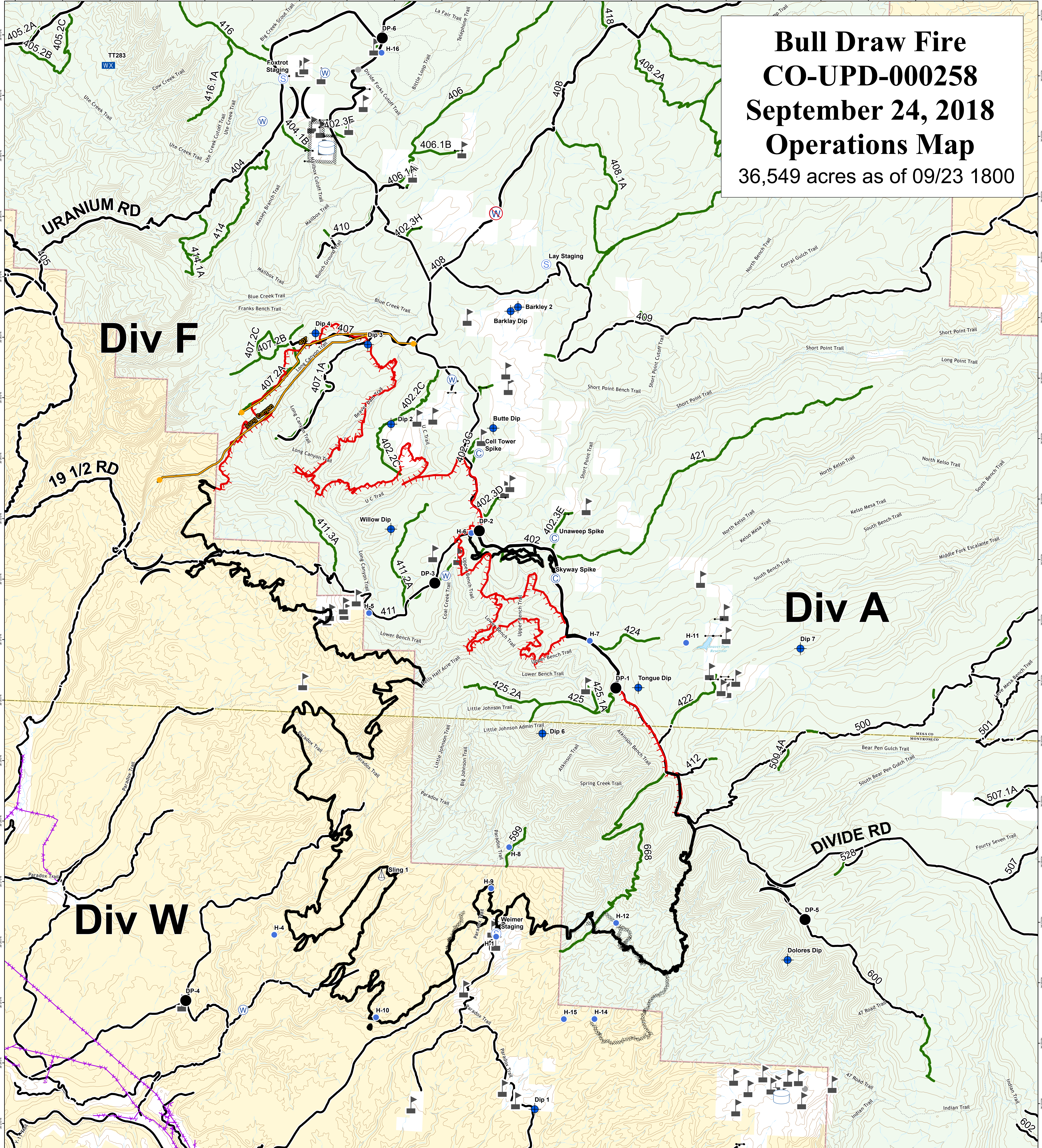


Bull Draw Fire CO-UPD-000258 September 24, 2018 Operations Map

36,549 acres as of 09/23 1800



- | | | | | |
|-----------------|----------------|--------------------------|------------------------------------|---------------------------------|
| --- Gate | ⊗ Fire Origin | — Uncontrolled Fire Edge | ○ Masticated | ▭ Wildfire Daily Fire Perimeter |
| ▲ Value at Risk | ● Helispot | — Completed Line | — Fire Break Planned or Incomplete | ▨ Unburned Island |
| ⊙ Camp | △ Sling Site | --- Completed Dozer Line | — Management Action | ▭ Bureau of Land Management |
| × Closure | ⊙ Staging Area | — Completed Hand Line | — Access or Improved Road | ▭ Private |
| ● Dip Site | ⊙ Water Source | — Road as Completed Line | — County roads | ▭ US Forest Service |
| ● Drop Point | ⊙ Water Tank |) Division Break | — USFS Routes | |

