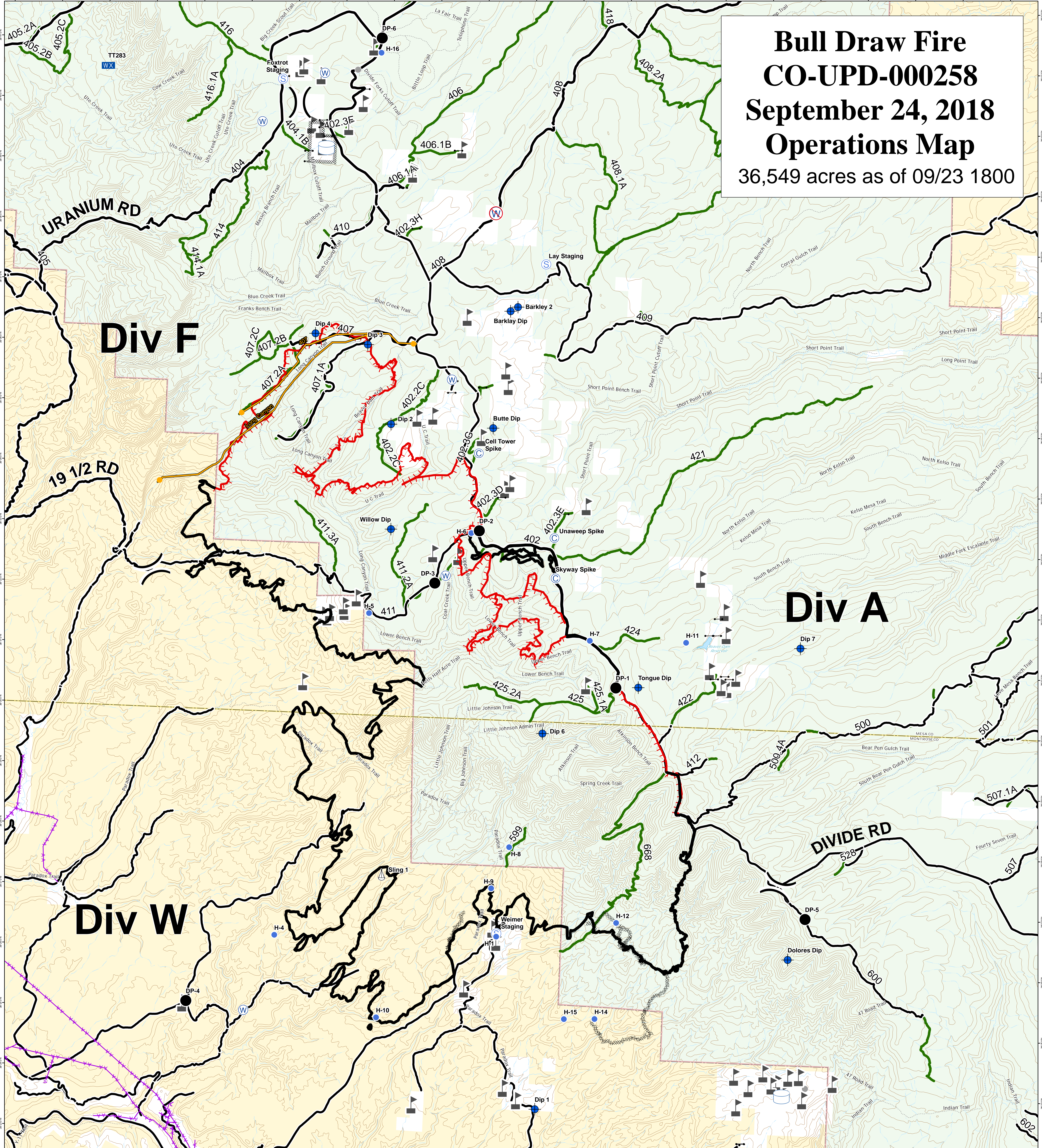


# Bull Draw Fire CO-UPD-000258 September 24, 2018 Operations Map

36,549 acres as of 09/23 1800



- |                 |                |                          |                                    |                                 |
|-----------------|----------------|--------------------------|------------------------------------|---------------------------------|
| --- Gate        | ⊗ Fire Origin  | — Uncontrolled Fire Edge | ⊙ Masticated                       | ▭ Wildfire Daily Fire Perimeter |
| ▲ Value at Risk | ● Helispot     | — Completed Line         | — Fire Break Planned or Incomplete | ▨ Unburned Island               |
| ⊙ Camp          | △ Sling Site   | ⊘ Completed Dozer Line   | — Management Action                | ▭ Bureau of Land Management     |
| × Closure       | ⊙ Staging Area | — Completed Hand Line    | — Access or Improved Road          | ▭ Private                       |
| ● Dip Site      | ⊙ Water Source | — Road as Completed Line | — County roads                     | ▭ US Forest Service             |
| ● Drop Point    | ⊙ Water Tank   | ) ( Division Break       | — USFS Routes                      |                                 |

