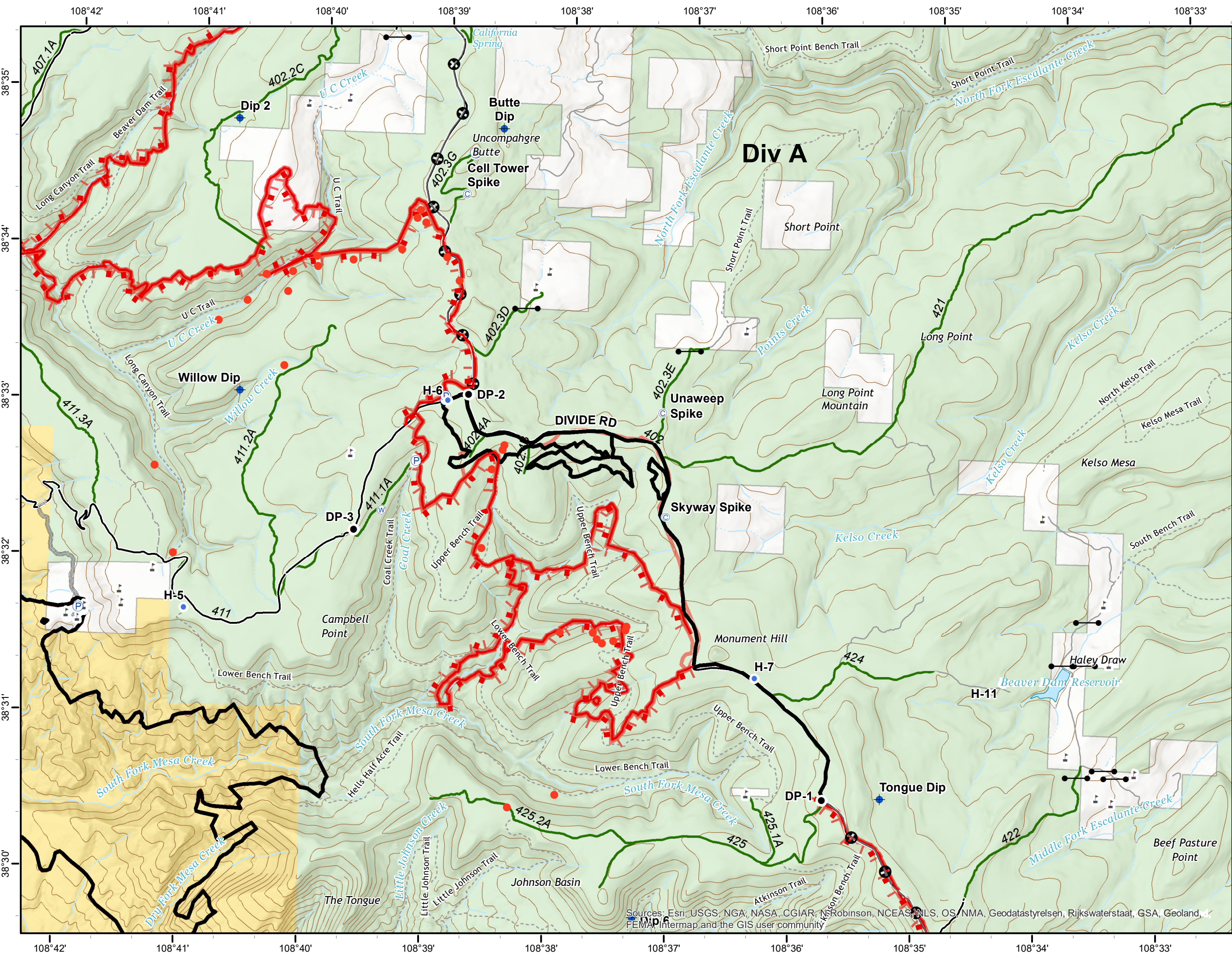
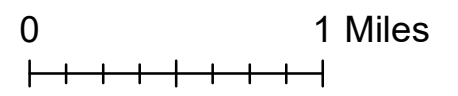
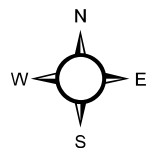


**Bull Draw Fire**  
**CO-UPD-000258**  
**September 24, 2018**  
**Central**  
 36,549 acres as of 9/23 1800

- Hot Spots 9/21 @ 20:30
- ⊙ Camp
- ◆ Dip Site
- Drop Point
- Helispot
- Ⓟ Pump
- ⊕ Water Source
- ┌ Uncontrolled Fire Edge
- Completed Line
- ⊕ Mastication
- Access or Improved Road
- County roads
- USFS Routes
- World Hillshade
- Bureau of Land Management
- US Forest Service
- Private



Sources: Esri, USGS, NGA, NASA, CGIAR, Robinson, NCEAS, NLS, OS, NMA, Geodatastyrelsen, Rijkswaterstaat, GSA, Geoland, FEMA Intermap and the GIS user community