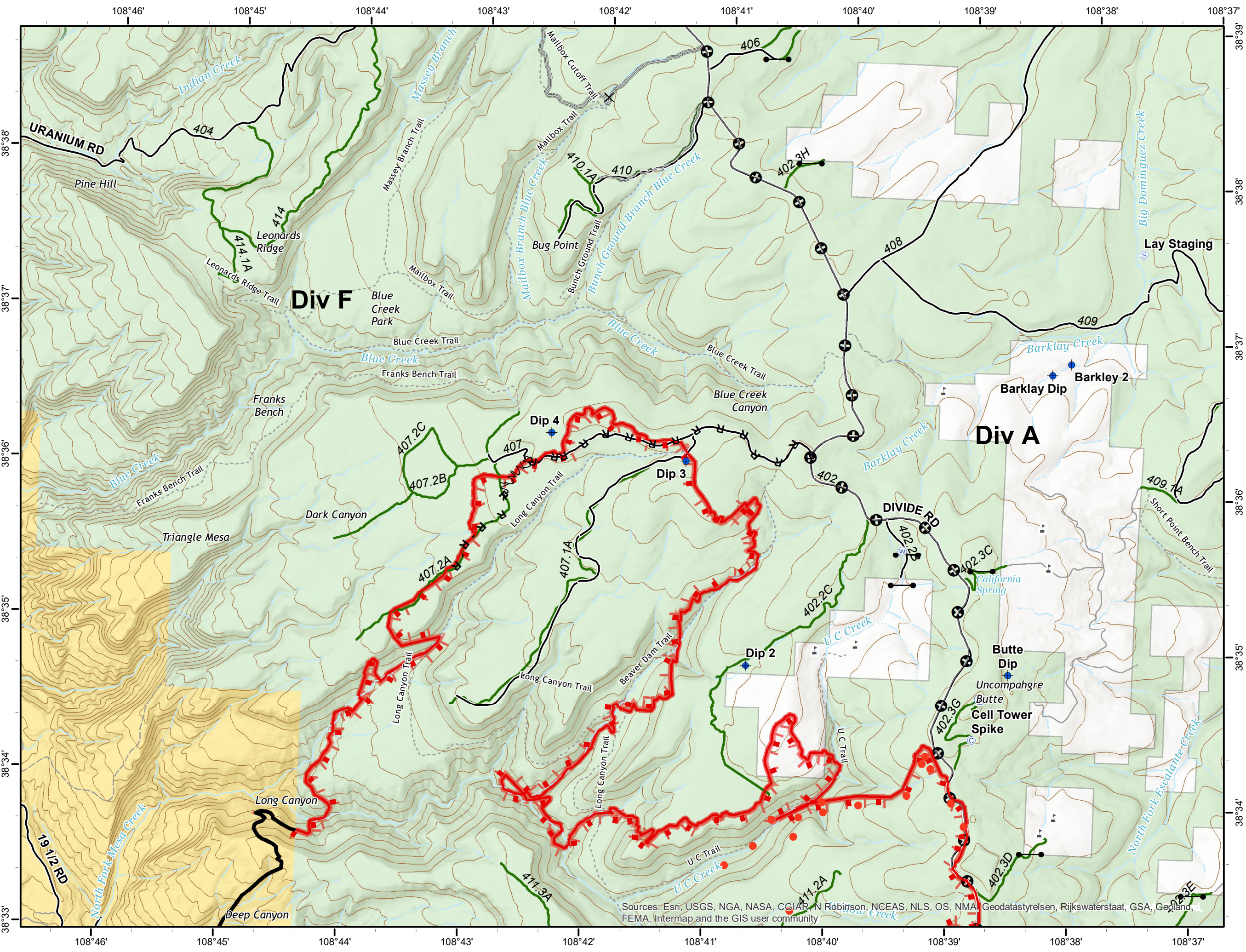
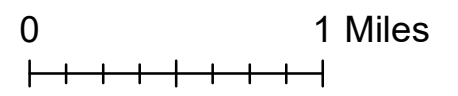
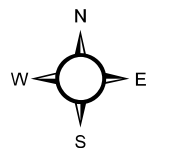


Bull Draw Fire
CO-UPD-000258
September 24, 2018
North
 36,549 acres as of 9/23 1800

- Hot Spots 9/21 @ 20:30
- ⊙ Camp
- ◆ Dip Site
- ⊕ Pump
- ⊙ Staging Area
- ⊕ Water Source
- └─┘ Uncontrolled Fire Edge
- R - R Road as Completed Line
- ⋈ Fire Break Planned or Incomplete
- ⊕ Mastication
- Access or Improved Road
- County roads
- USFS Routes
- World Hillshade
- Bureau of Land Management
- US Forest Service
- Private



Sources: Esri, USGS, NGA, NASA, CGIAR, N Robinson, NCEAS, NLS, OS, NMA, Geodatastyrelsen, Rijkswaterstaat, GSA, Geoland, FEMA, Intermap and the GIS user community