
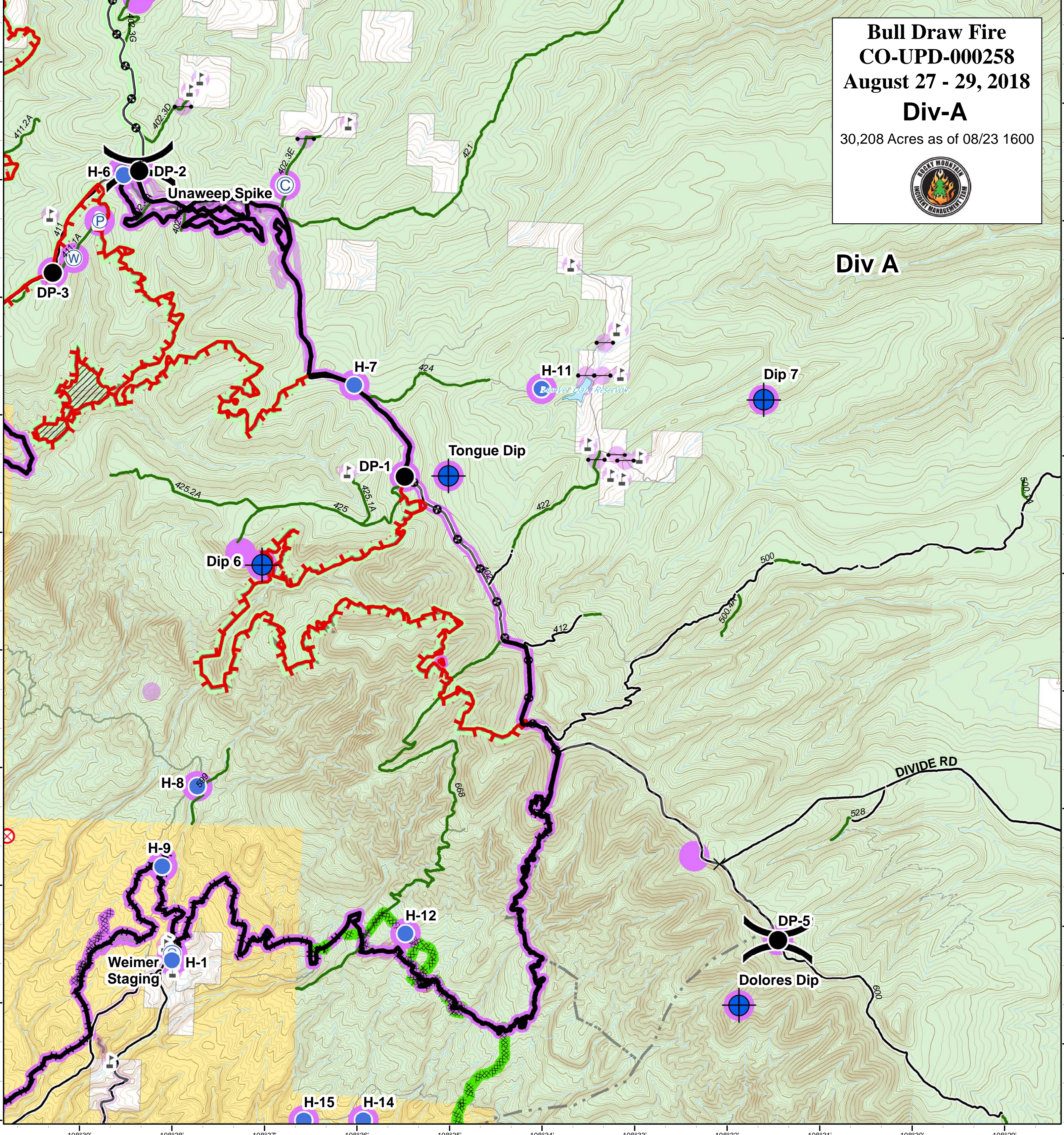


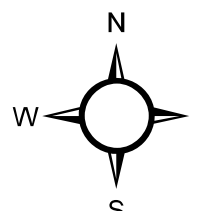

**Bull Draw Fire**  
**CO-UPD-000258**  
**August 27 - 29, 2018**  
**Div-A**  
 30,208 Acres as of 08/23 1600



**Div A**



- |                       |            |                     |                         |                           |                               |
|-----------------------|------------|---------------------|-------------------------|---------------------------|-------------------------------|
| Repair Needed         | Camp       | Pump                | Uncontrolled Fire Edge  | County roads              | Wildfire Daily Fire Perimeter |
| No Repair Needed      | Closure    | Staging Area        | Completed Line          | USFS Routes               | Unburned Island               |
| Unknown               | Dip Site   | Water Source        | Completed Dozer Line    | Bureau of Land Management | US Forest Service             |
| Completed - Inspected | Drop Point | Completed Hand Line | Division Break          | Private                   |                               |
| No Repair Needed      | Helispot   | Mastication         | Access or Improved Road |                           |                               |
| Unknown               |            |                     |                         |                           |                               |

GISS: KBrodhead  
 Date map produced: Aug 26, 2018  
 1451 hrs  
 UTM NAD83 Zone 13N