
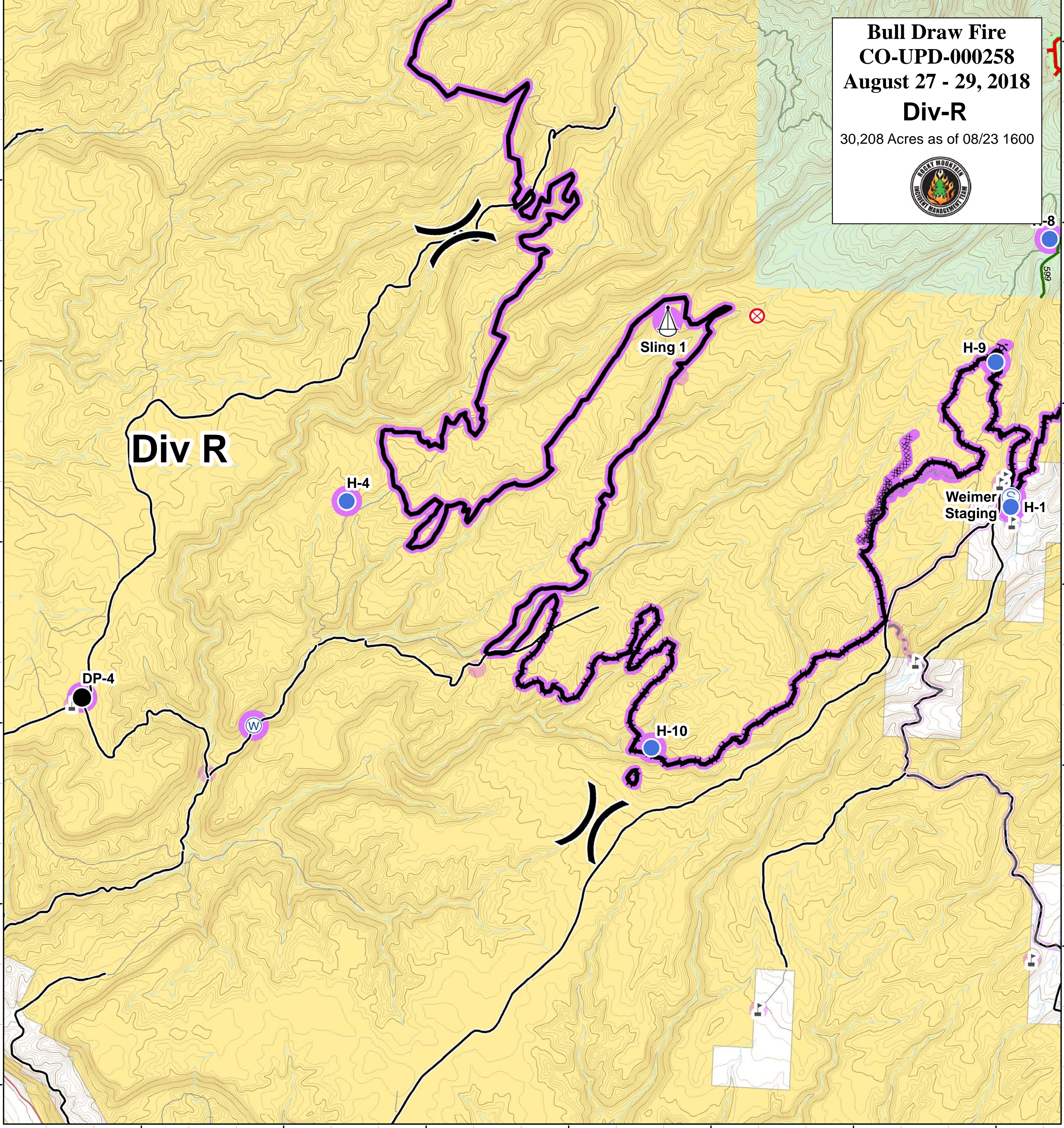
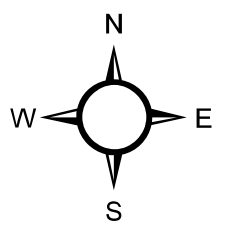
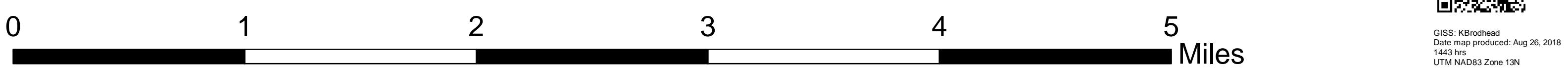


Bull Draw Fire
CO-UPD-000258
August 27 - 29, 2018
Div-R
 30,208 Acres as of 08/23 1600

108°45' 108°44' 108°43' 108°42' 108°41' 108°40' 108°39' 108°38'

- | | | | | |
|--------------------|--------------|-----------------------|---------------------------|---------------------------------|
| ● No Repair Needed | ● Drop Point | Ⓜ Water Source | — Completed Line | ▭ Wildfire Daily Fire Perimeter |
| ● Unknown | ● Helispot | Ⓜ Division Break | ⊗ Completed Dozer Line | ▭ Bureau of Land Management |
| ● No Repair Needed | Ⓜ Sling Site | ⊗ Completed Hand Line | — Access or Improved Road | ▭ US Forest Service |
| — Unknown | | — County roads | — USFS Routes | ▭ Private |



GISS: KBrodhead
 Date map produced: Aug 26, 2018
 1443 hrs
 UTM NAD83 Zone 13N