
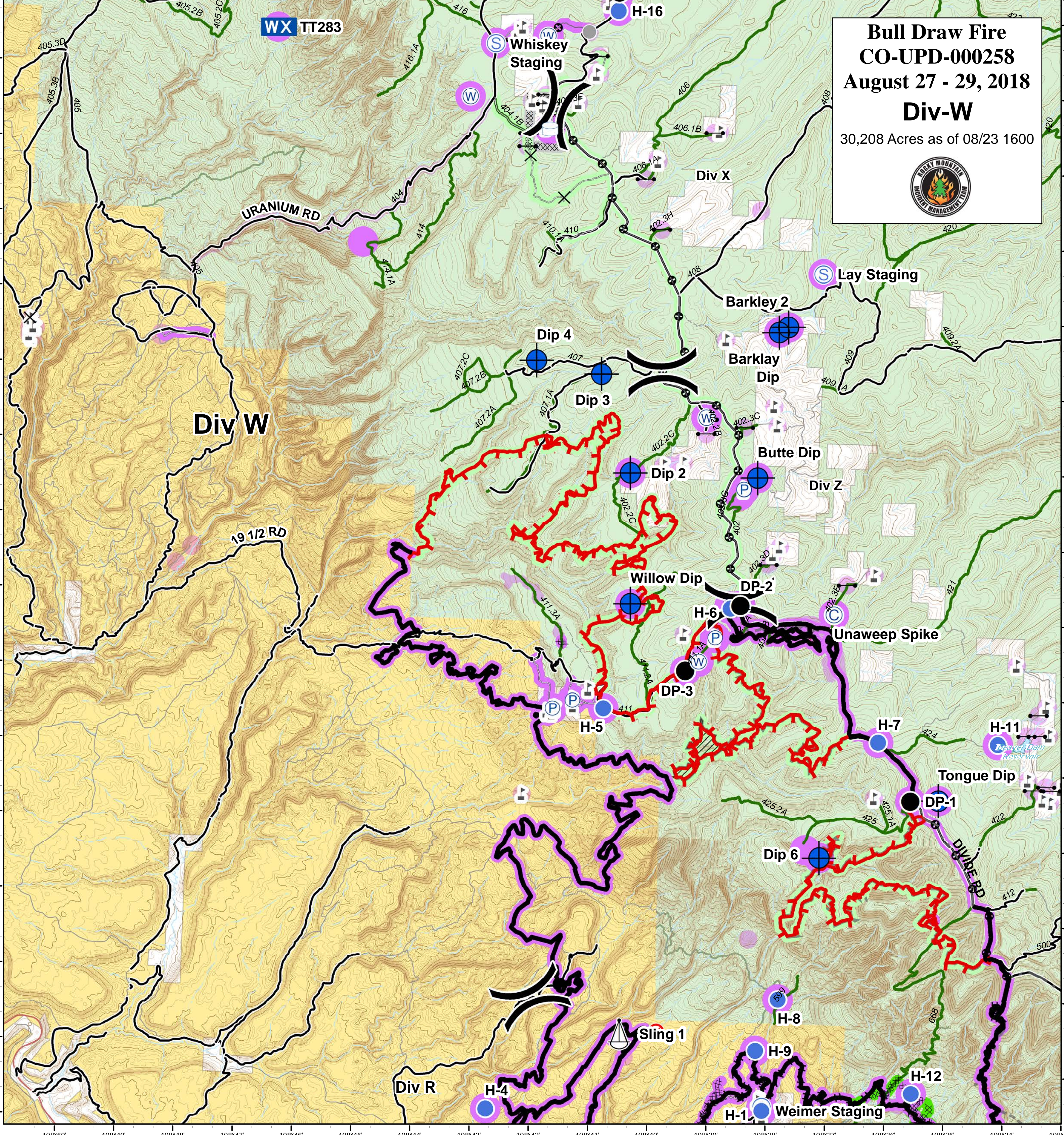
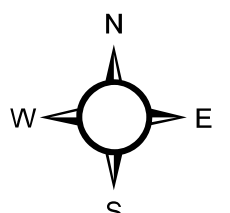

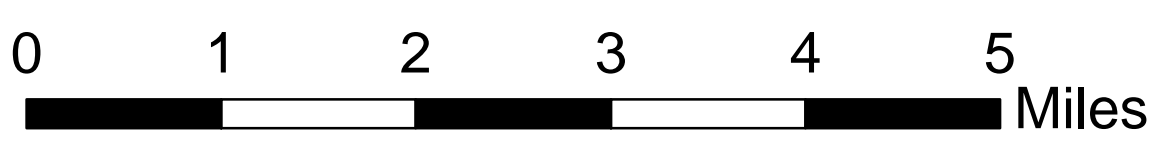


Bull Draw Fire
CO-UPD-000258
August 27 - 29, 2018
Div-W
 30,208 Acres as of 08/23 1600

No Repair Needed	✕ Closure	Ⓢ Staging Area	🔴 Uncontrolled Fire Edge	🔴 Wildfire Daily Fire Perimeter
● Unknown	⊕ Dip Site	Ⓜ Water Source	— Completed Line	▨ Unburned Island
No Repair Needed	● Drop Point	Ⓜ Water Tank	⊗ Completed Dozer Line	🟡 Bureau of Land Management
— Other - See Comments	● Helispot) Division Break	⊕ Mastication	🟢 US Forest Service
— Unknown	Ⓟ Pump		— Access or Improved Road	⬜ Private
	⚙ Sling Site		— County roads	
			— USFS Routes	



GISS: KBrodhead
 Date map produced: Aug 26, 2018
 1446 hrs
 UTM NAD83 Zone 13N