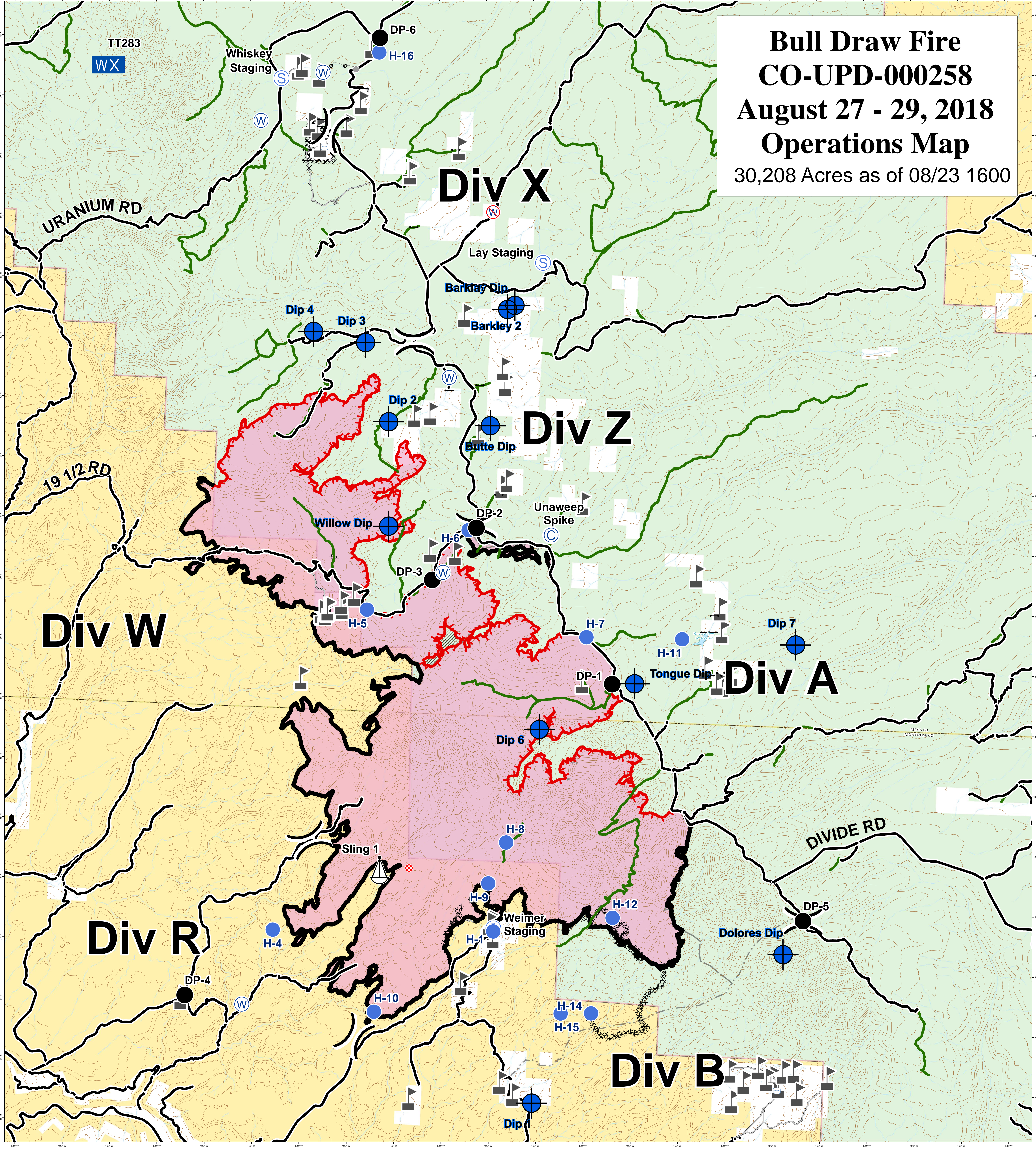
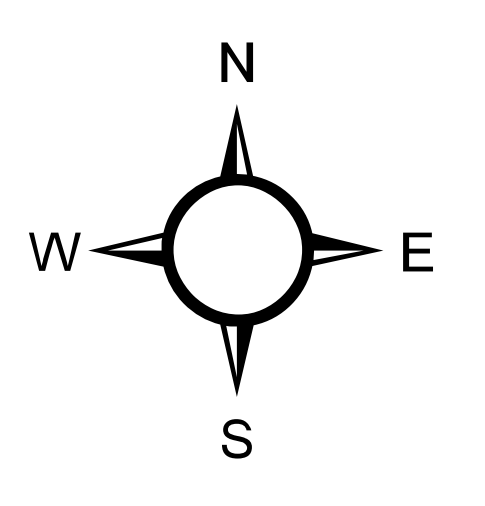
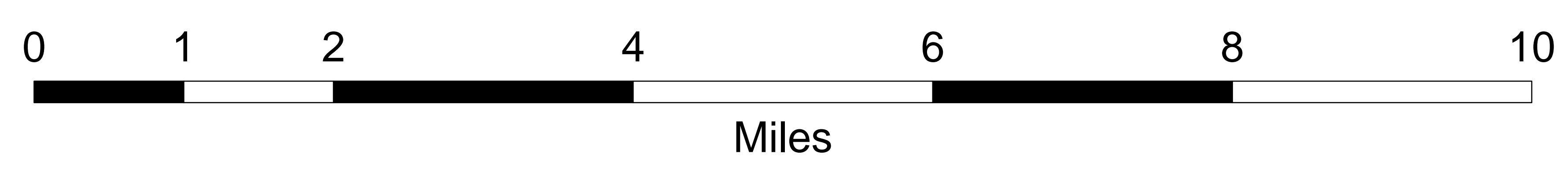


Bull Draw Fire
CO-UPD-000258
August 27 - 29, 2018
Operations Map
 30,208 Acres as of 08/23 1600



- | | | | | |
|---------------|------------------|--------------------------|---------------------------|---------------------------------|
| ⊙ Camp | ⚓ Sling Site | — Uncontrolled Fire Edge | — County roads | ■ Wildfire Daily Fire Perimeter |
| × Closure | Ⓢ Staging Area | — Completed Line | — USFS Routes | ▨ Unburned Island |
| ⊕ Dip Site | Ⓜ Water Source | — Completed Dozer Line | — Completed Hand Line | ■ Bureau of Land Management |
| ● Drop Point | Ⓜ Water Tank | ○ Masticated | — Access or Improved Road | □ Private |
| ⊗ Fire Origin |) Division Break | | | ■ US Forest Service |
| ● Helispot | | | | |



GIS: KBroadhead
 Date map produced: Aug 26, 2018
 1415 hrs
 UTM NAD83 Zone 13N