



416 Fire - CO-SJF-416 and Burro Fire - CO-SJF-509

IAP Grid Index - 6/12/18

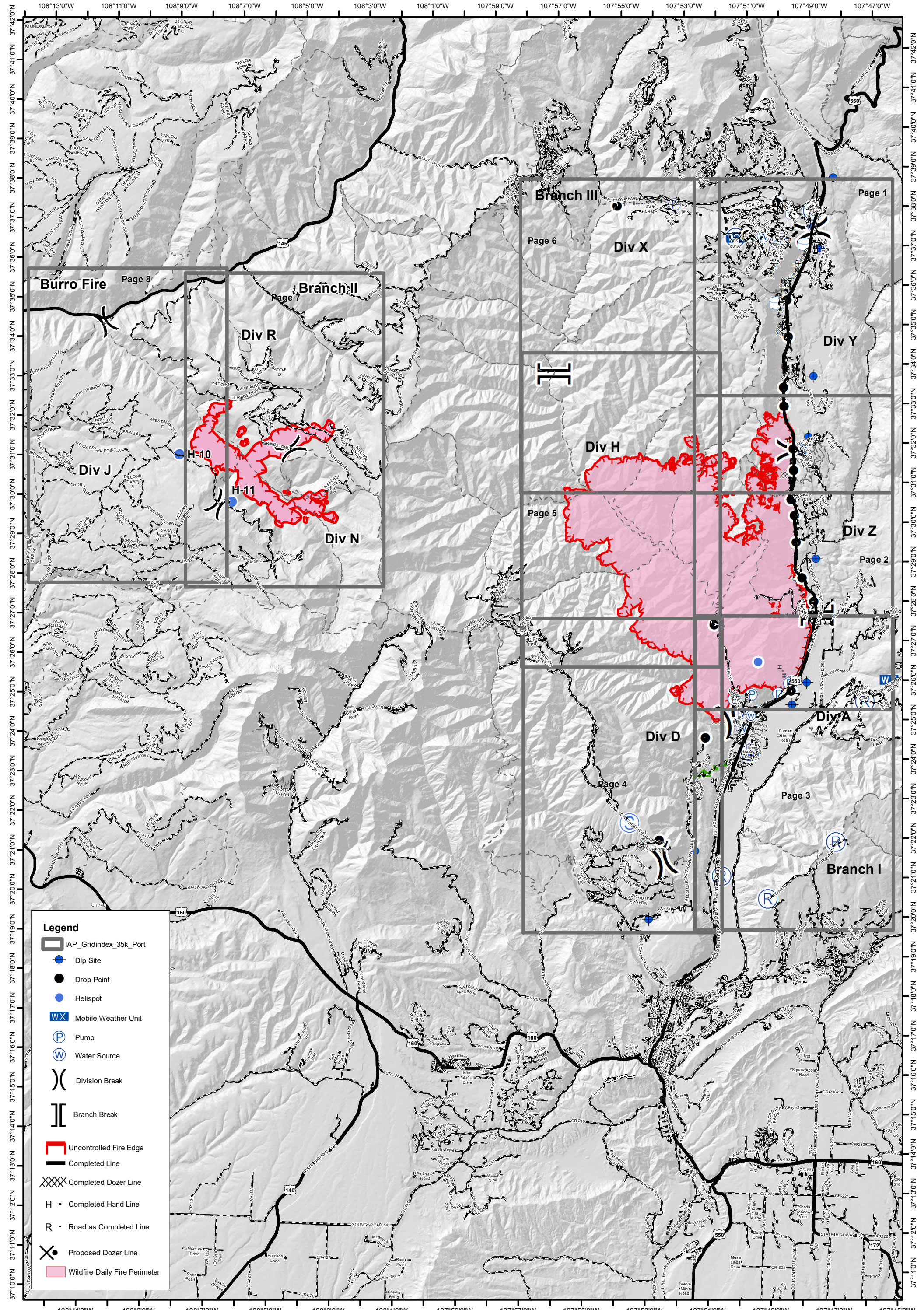
Day Shift

0 0.5 1

Miles

Datum: NAD 83

GISS - TS



- Legend**
- IAP_Gridindex_35k_Port
 - Dip Site
 - Drop Point
 - Helispot
 - Mobile Weather Unit
 - Pump
 - Water Source
 - Division Break
 - Branch Break
 - Uncontrolled Fire Edge
 - Completed Line
 - Completed Dozer Line
 - H - Completed Hand Line
 - R - Road as Completed Line
 - Proposed Dozer Line
 - Wildfire Daily Fire Perimeter



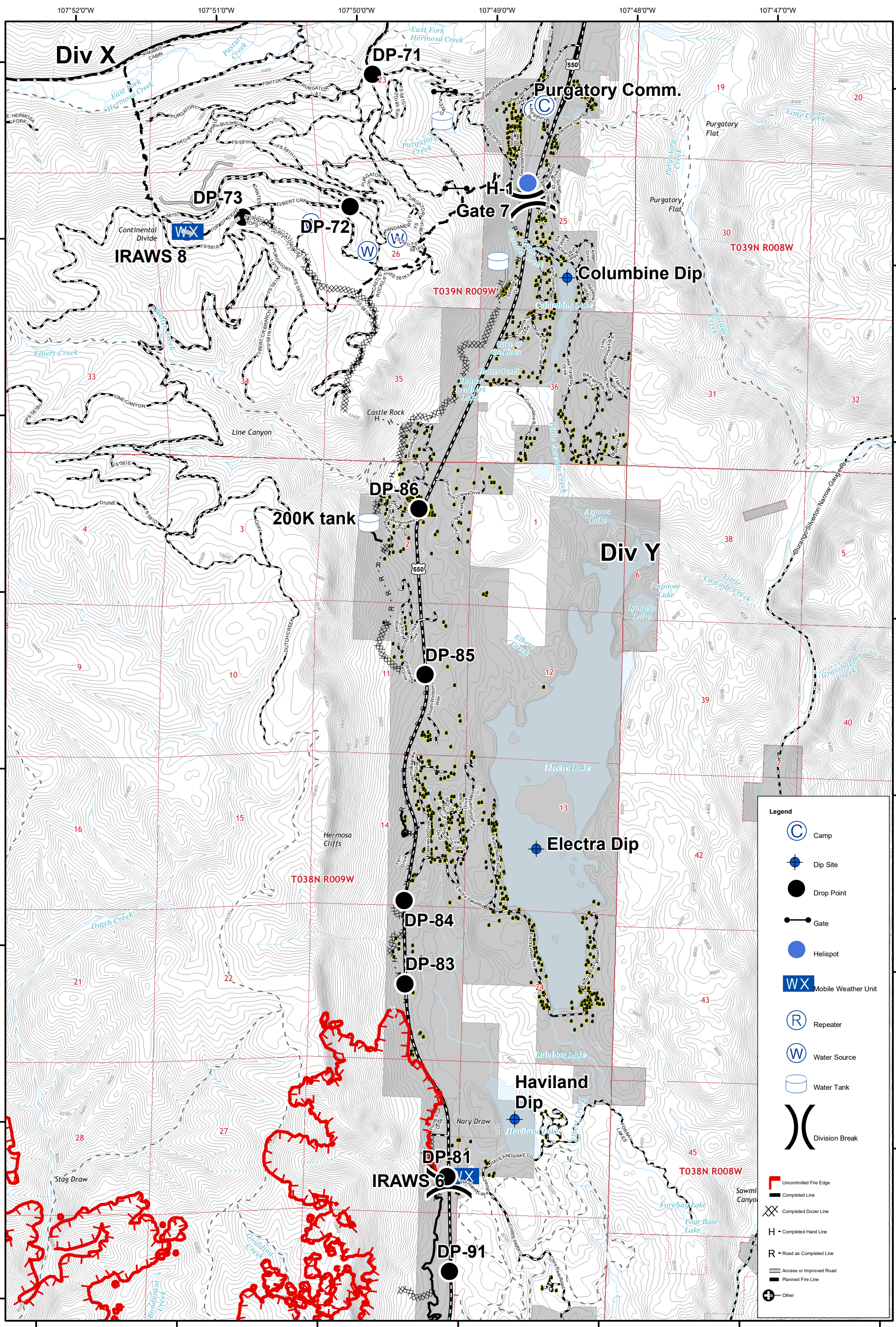
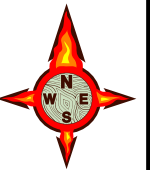
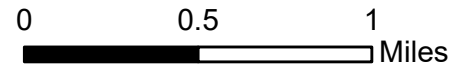
IR Perimeter Data
 416 Fire - 21,862 Acres
 6/11/2018 @ 1625 hrs
 Burro Fire - 1651 Acres
 6/11/2018 @ 1651 hrs

416 Fire - CO-SJF-416 and Burro Fire - CO-SJF-509

IAP - 6/12/18

Day Shift - Page 1

Datum: NAD 83
 GISS - TS



Legend

- Camp
- Dip Site
- Drop Point
- Gate
- Helispot
- Mobile Weather Unit
- Repeater
- Water Source
- Water Tank
- Division Break
- Uncontrolled Fire Edge
- Completed Line
- Completed Dozer Line
- Completed Hand Line
- Road as Completed Line
- Access or Improved Road
- Planned Fire Line
- Other



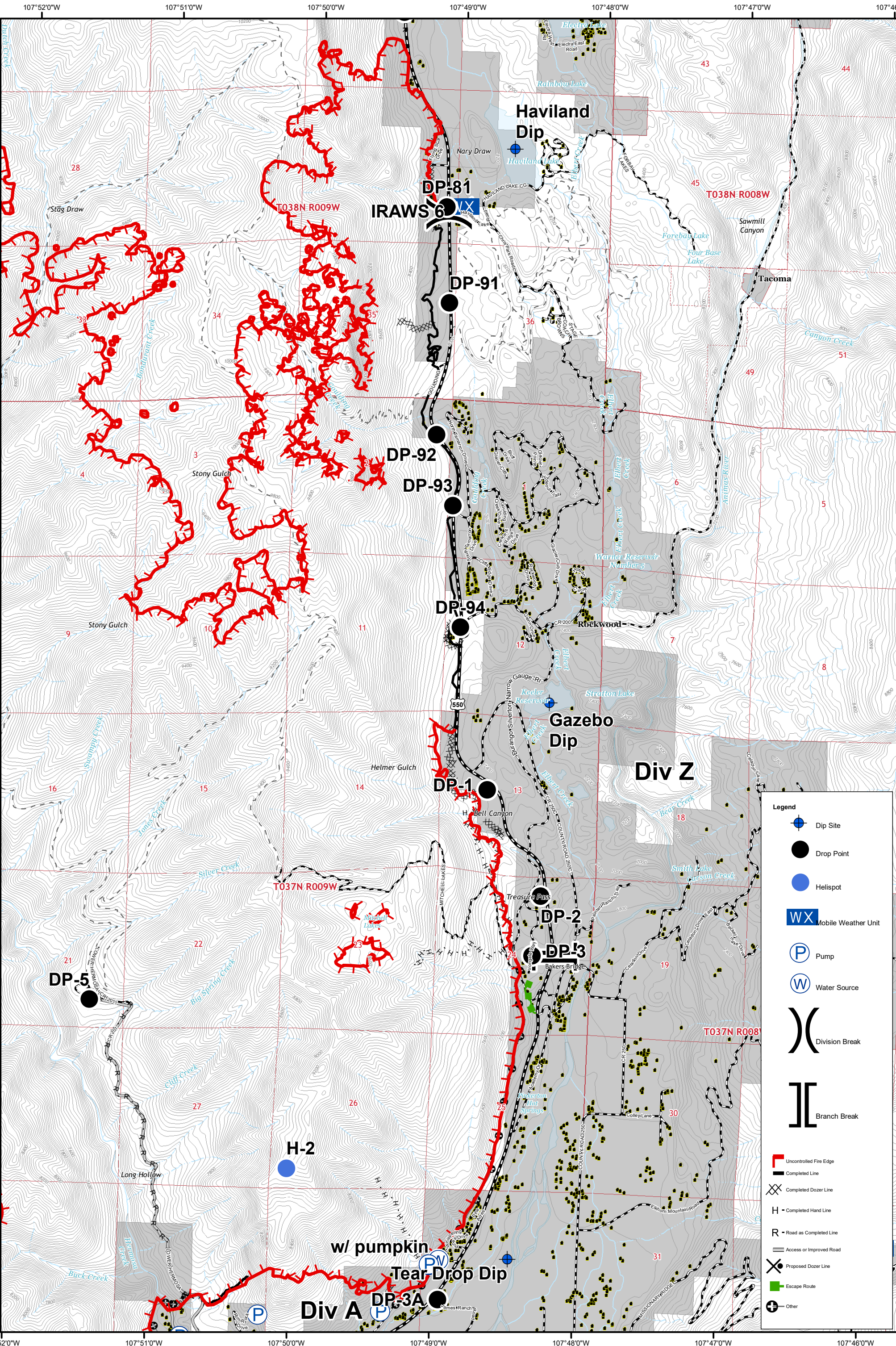
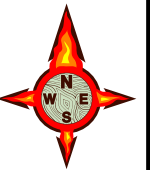
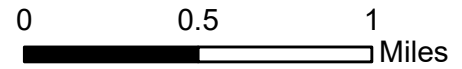
IR Perimeter Data
 416 Fire - 21,862 Acres
 6/11/2018 @ 1625 hrs
 Burro Fire - 1651 Acres
 6/11/2018 @ 1651 hrs

416 Fire - CO-SJF-416 and Burro Fire - CO-SJF-509

IAP - 6/12/18

Day Shift - Page 2

Datum: NAD 83
 GISS - TS



Legend

- Dip Site
- Drop Point
- Helispot
- Mobile Weather Unit
- Pump
- Water Source
- Division Break
- Branch Break
- Uncontrolled Fire Edge
- Completed Line
- Completed Dozer Line
- Completed Hand Line
- Road as Completed Line
- Access or Improved Road
- Proposed Dozer Line
- Escape Route
- Other

w/ pumpkin
 Tear Drop Dip

Div A

Div Z

Gazebo Dip

Haviland Dip

IRAWS 6

DP-5

DP-1

DP-2

DP-3

DP-92

DP-93

DP-94

DP-81

DP-91

DP-3A

H-2

H-3

H-4

H-5

H-6

T038N R009W

T038N R008W

T037N R009W

T037N R008

Stony Gulch

Stony Gulch

Helmer Gulch

Keeler Reservoir

Stratton Lake

Warner Reservoir Number 3

Rockwood

Haviland Dip

Tacoma

IRAWS 6

DP-94

DP-2

DP-3

DP-92

DP-93

DP-94

DP-81

DP-91

DP-3A

H-2

H-3

H-4

H-5

H-6

T038N R009W

T038N R008W

T037N R009W

T037N R008

Stony Gulch

Stony Gulch

Helmer Gulch

Keeler Reservoir

Stratton Lake

Warner Reservoir Number 3

Rockwood

Haviland Dip

Tacoma

IRAWS 6

DP-94

DP-2

DP-3

DP-92

DP-93

DP-94

DP-81

DP-91

DP-3A

H-2

H-3

H-4

H-5

H-6

T038N R009W

T038N R008W

T037N R009W

T037N R008

Stony Gulch

Stony Gulch

Helmer Gulch

Keeler Reservoir

Stratton Lake

Warner Reservoir Number 3

Rockwood

Haviland Dip

Tacoma

IRAWS 6

DP-94

DP-2

DP-3

DP-92

DP-93

DP-94

DP-81

DP-91

DP-3A

H-2

H-3

H-4

H-5

H-6

T038N R009W

T038N R008W

T037N R009W

T037N R008

Stony Gulch

Stony Gulch

Helmer Gulch

Keeler Reservoir

Stratton Lake

Warner Reservoir Number 3

Rockwood

Haviland Dip

Tacoma

IRAWS 6

DP-94

DP-2

DP-3

DP-92

DP-93

DP-94

DP-81

DP-91

DP-3A

H-2

H-3

H-4

H-5

H-6

T038N R009W

T038N R008W

T037N R009W

T037N R008

Stony Gulch

Stony Gulch

Helmer Gulch

Keeler Reservoir

Stratton Lake

Warner Reservoir Number 3

Rockwood

Haviland Dip

Tacoma

IRAWS 6

DP-94

DP-2

DP-3

DP-92

DP-93

DP-94

DP-81

DP-91

DP-3A

H-2

H-3

H-4

H-5

H-6

T038N R009W

T038N R008W

T037N R009W

T037N R008

Stony Gulch

Stony Gulch

Helmer Gulch

Keeler Reservoir

Stratton Lake

Warner Reservoir Number 3

Rockwood

Haviland Dip

Tacoma

IRAWS 6

DP-94

DP-2

DP-3

DP-92

DP-93

DP-94

DP-81

DP-91

DP-3A

H-2

H-3

H-4

H-5

H-6

T038N R009W

T038N R008W

T037N R009W

T037N R008

Stony Gulch

Stony Gulch

Helmer Gulch

Keeler Reservoir

Stratton Lake

Warner Reservoir Number 3

Rockwood

Haviland Dip

Tacoma

IRAWS 6

DP-94

DP-2

DP-3

DP-92

DP-93

DP-94

DP-81

DP-91

DP-3A

H-2

H-3

H-4

H-5

H-6

T038N R009W

T038N R008W

T037N R009W

T037N R008

Stony Gulch

Stony Gulch

Helmer Gulch

Keeler Reservoir

Stratton Lake

Warner Reservoir Number 3

Rockwood

Haviland Dip

Tacoma

IRAWS 6

DP-94

DP-2

DP-3

DP-92

DP-93

DP-94

DP-81

DP-91

DP-3A

H-2

H-3

H-4

H-5

H-6

T038N R009W

T038N R008W

T037N R009W

T037N R008

Stony Gulch

Stony Gulch

Helmer Gulch

Keeler Reservoir

Stratton Lake

Warner Reservoir Number 3

Rockwood

Haviland Dip

Tacoma

IRAWS 6

DP-94

DP-2

DP-3

DP-92

DP-93

DP-94

DP-81

DP-91

DP-3A

H-2



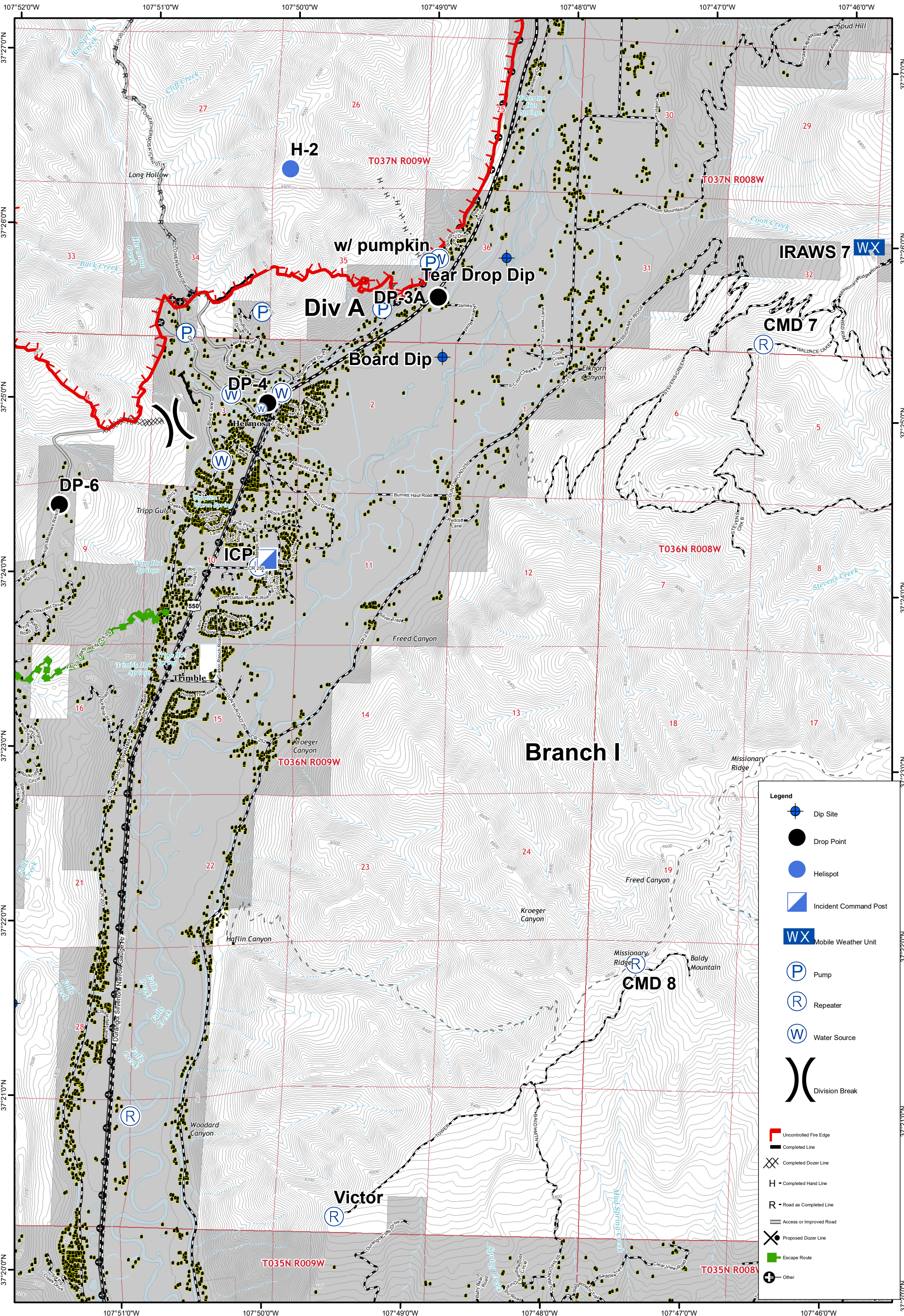
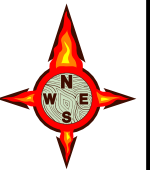
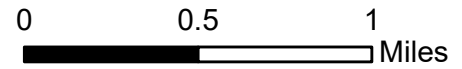
IR Perimeter Data
 416 Fire - 21,862 Acres
 6/11/2018 @ 1625 hrs
 Burro Fire - 1651 Acres
 6/11/2018 @ 1651 hrs

416 Fire - CO-SJF-416 and Burro Fire - CO-SJF-509

IAP - 6/12/18

Day Shift - Page 3

Datum: NAD 83
 GISS - TS



Legend

- Dip Site
- Drop Point
- Helispot
- Incident Command Post
- Mobile Weather Unit
- Pump
- Repeater
- Water Source
- Division Break
- Uncontrolled Fire Edge
- Completed Line
- Completed Dozer Line
- Completed Hand Line
- Road as Completed Line
- Access or Improved Road
- Proposed Dozer Line
- Escape Route
- Other



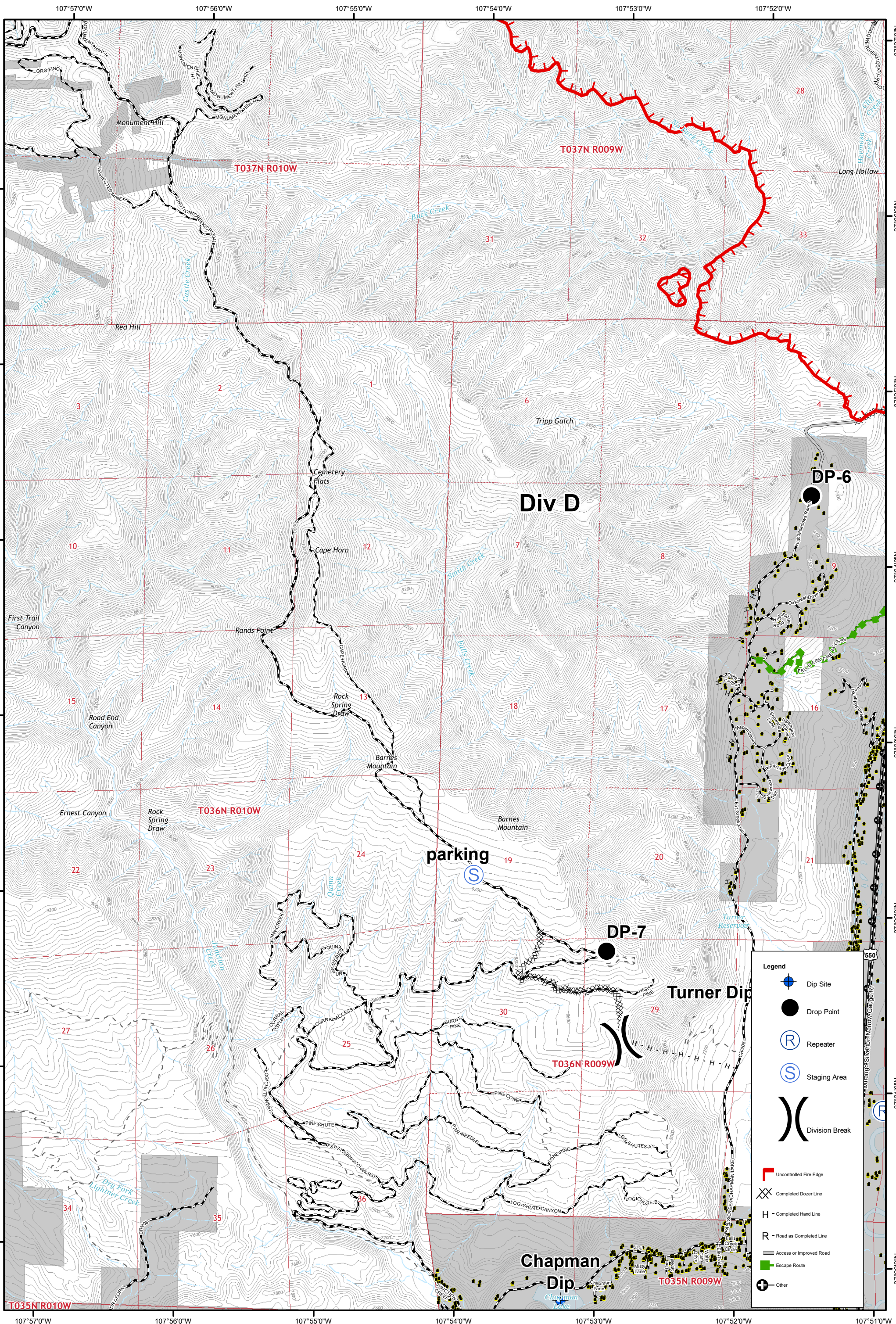
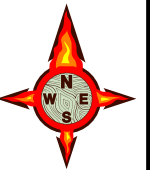
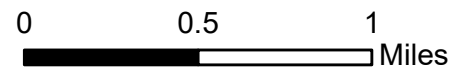
IR Perimeter Data
 416 Fire - 21,862 Acres
 6/11/2018 @ 1625 hrs
 Burro Fire - 1651 Acres
 6/11/2018 @ 1651 hrs

416 Fire - CO-SJF-416 and Burro Fire - CO-SJF-509

IAP - 6/12/18

Day Shift - Page 4

Datum: NAD 83
 GISS - TS



Legend

- Dip Site
- Drop Point
- Repeater
- Staging Area
- Division Break
- Uncontrolled Fire Edge
- Completed Dozer Line
- Completed Hand Line
- Road as Completed Line
- Access or Improved Road
- Escape Route
- Other



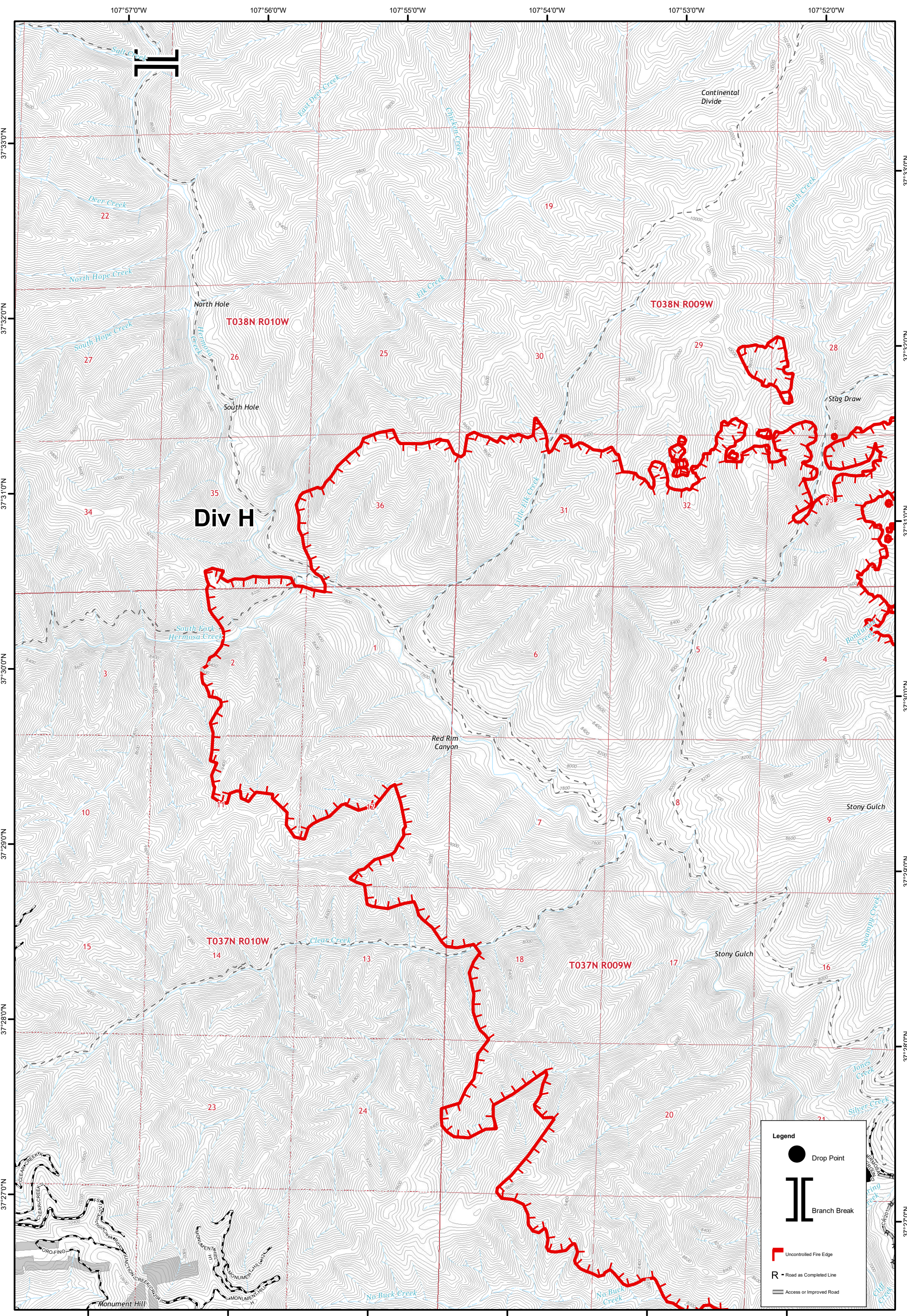
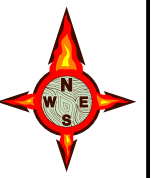
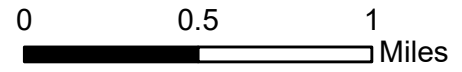
IR Perimeter Data
 416 Fire - 21,862 Acres
 6/11/2018 @ 1625 hrs
 Burro Fire - 1651 Acres
 6/11/2018 @ 1651 hrs

416 Fire - CO-SJF-416 and Burro Fire - CO-SJF-509

IAP - 6/12/18

Day Shift - Page 5

Datum: NAD 83
 GISS - TS



Legend

- Drop Point
- Branch Break
- Uncontrolled Fire Edge
- Road as Completed Line
- Access or Improved Road



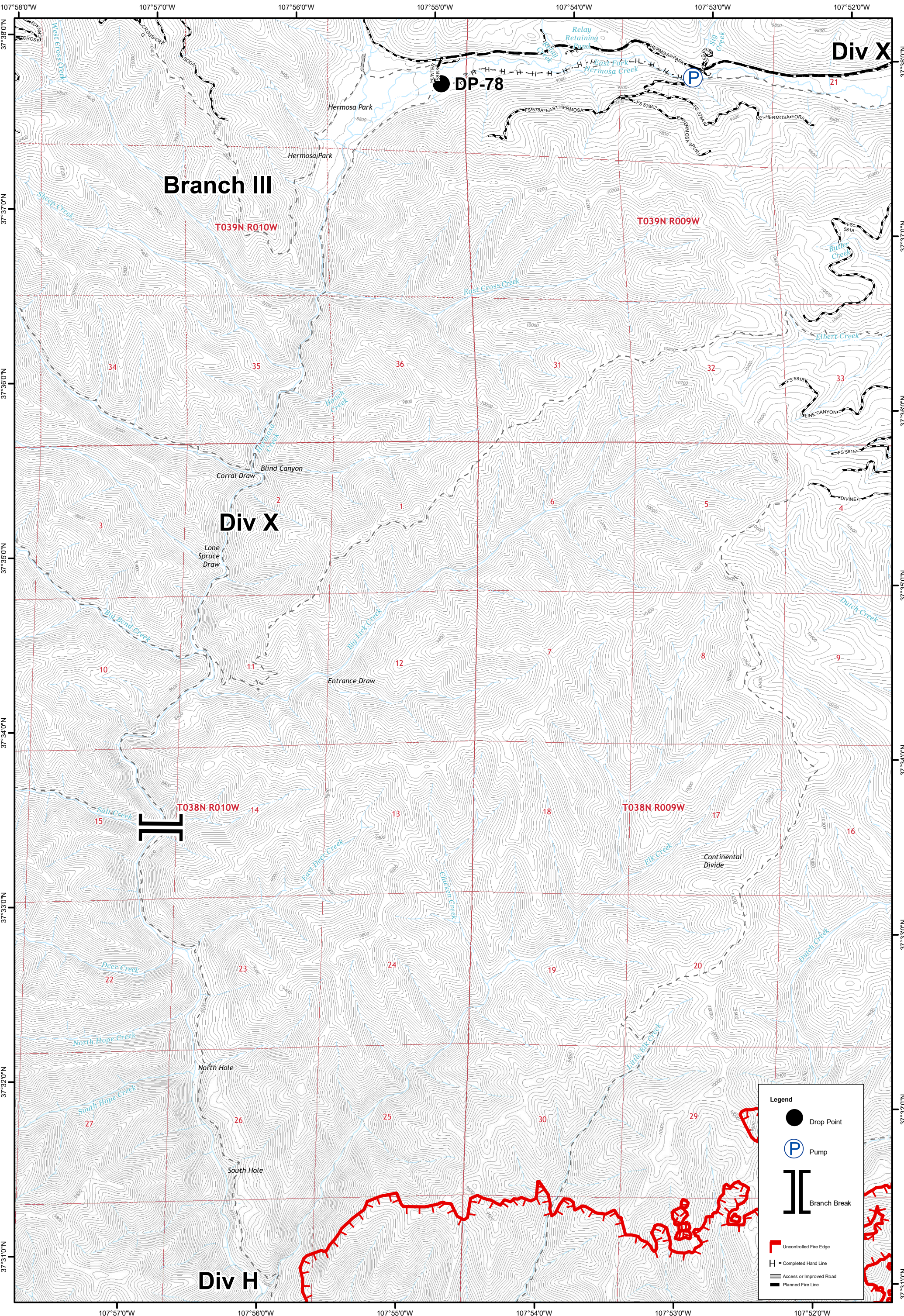
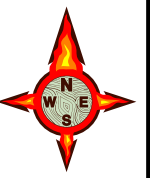
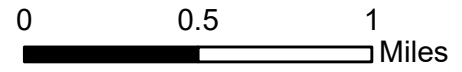
IR Perimeter Data
 416 Fire - 21,862 Acres
 6/11/2018 @ 1625 hrs
 Burro Fire - 1651 Acres
 6/11/2018 @ 1651 hrs

416 Fire - CO-SJF-416 and Burro Fire - CO-SJF-509

IAP - 6/12/18

Day Shift - Page 6

Datum: NAD 83
 GISS - TS



Legend

- Drop Point
- Pump
- Branch Break
- Uncontrolled Fire Edge
- Completed Hand Line
- Access or Improved Road
- Planned Fire Line



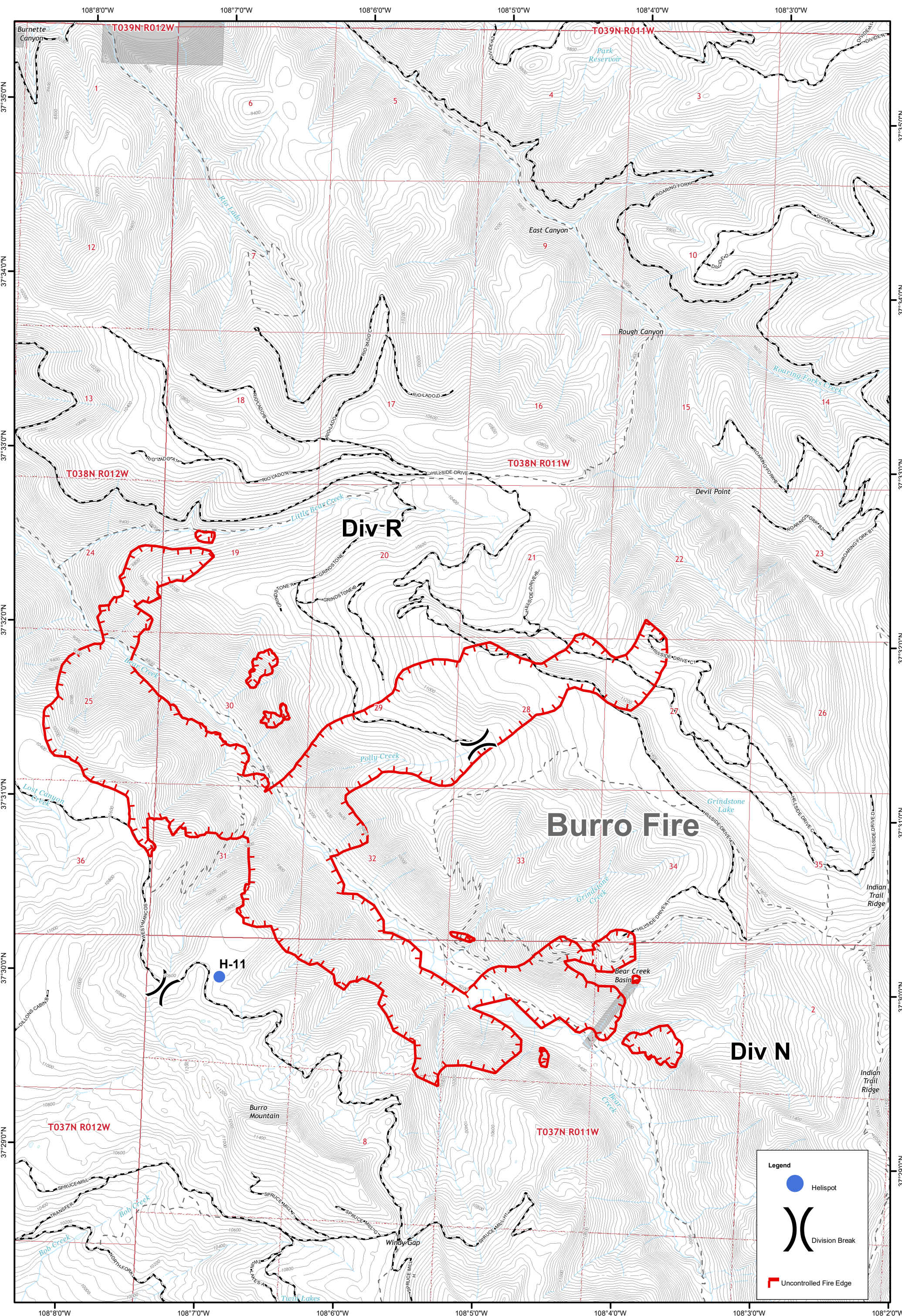
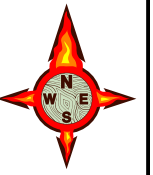
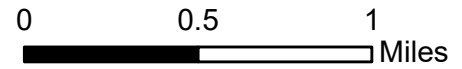
IR Perimeter Data
 416 Fire - 21,862 Acres
 6/11/2018 @ 1625 hrs
 Burro Fire - 1651 Acres
 6/11/2018 @ 1651 hrs

416 Fire - CO-SJF-416 and Burro Fire - CO-SJF-509




IAP - 6/12/18

Day Shift - Page 7

Datum: NAD 83
 GISS - TS



Legend

-  Helispot
-  Division Break
-  Uncontrolled Fire Edge



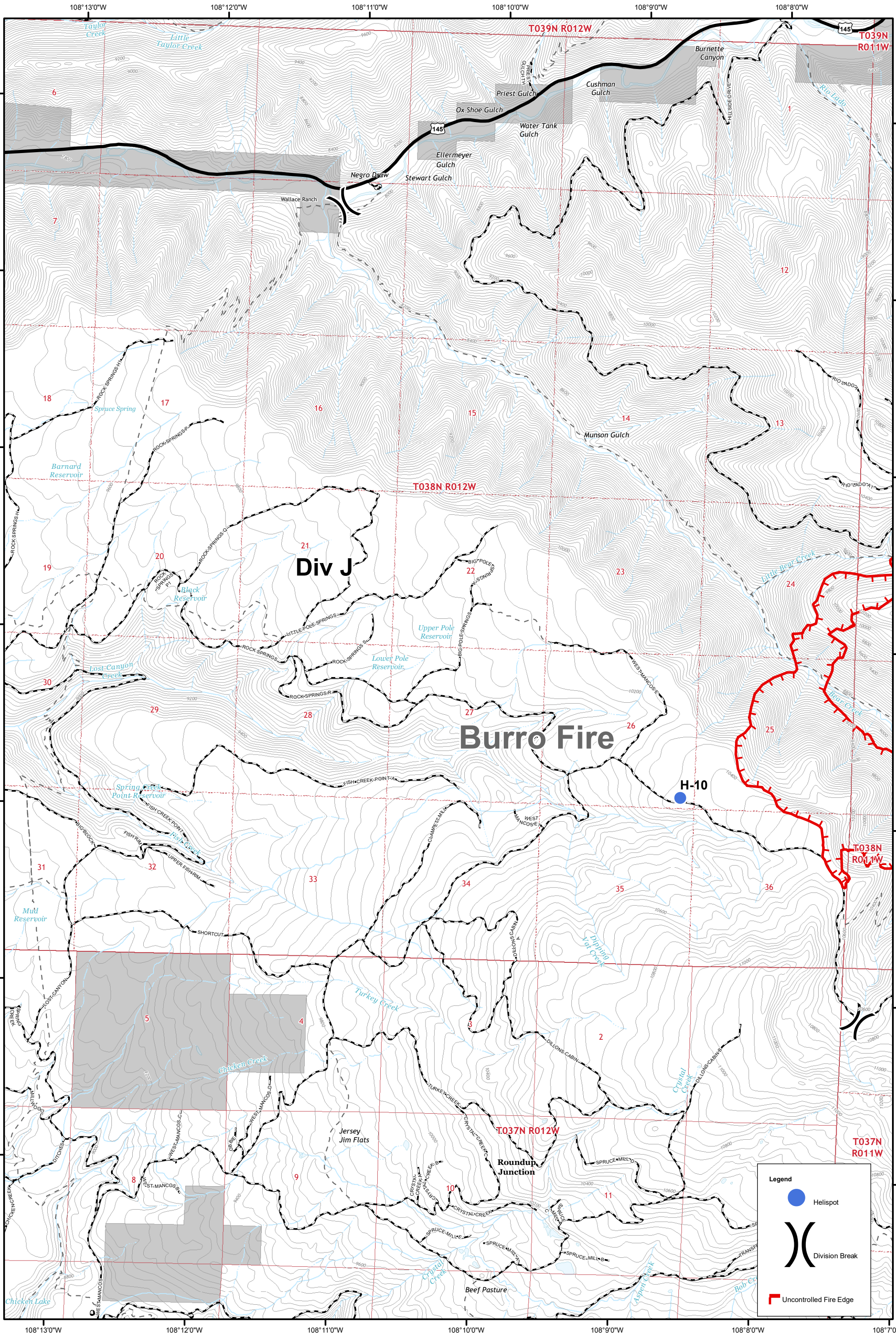
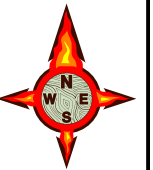
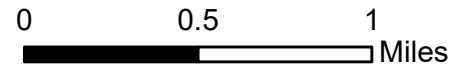
IR Perimeter Data
 416 Fire - 21,862 Acres
 6/11/2018 @ 1625 hrs
 Burro Fire - 1651 Acres
 6/11/2018 @ 1651 hrs

416 Fire - CO-SJF-416 and Burro Fire - CO-SJF-509

IAP - 6/12/18

Day Shift - Page 8

Datum: NAD 83
 GISS - TS



Legend

- Helispot
- Division Break
- Uncontrolled Fire Edge