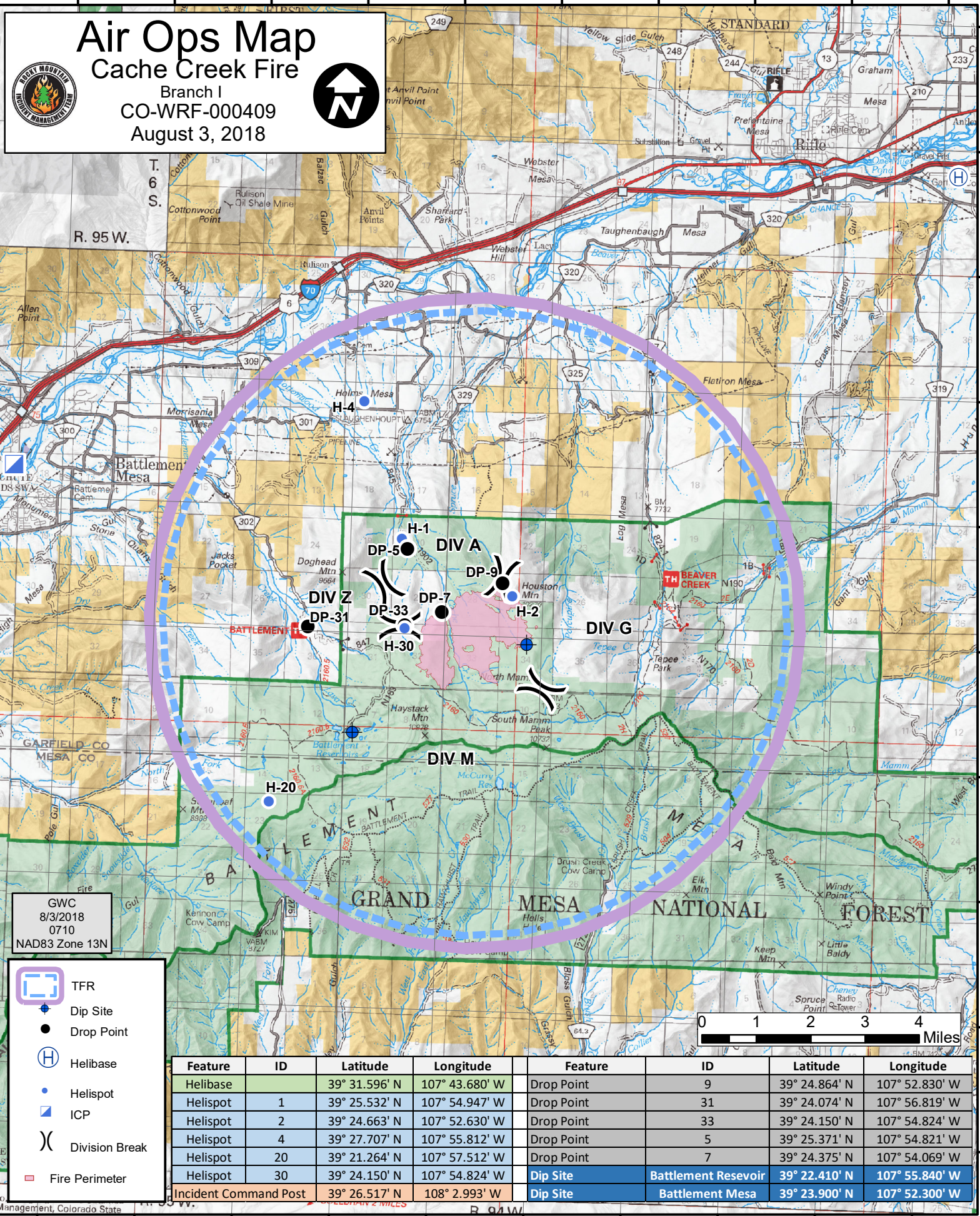


Air Ops Map

Cache Creek Fire

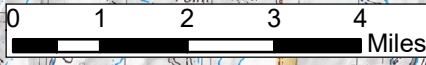
Branch I
CO-WRF-000409
August 3, 2018



GWC
8/3/2018
0710
NAD83 Zone 13N

- TFR
- Dip Site
- Drop Point
- Helibase
- Helispot
- ICP
- Division Break
- Fire Perimeter

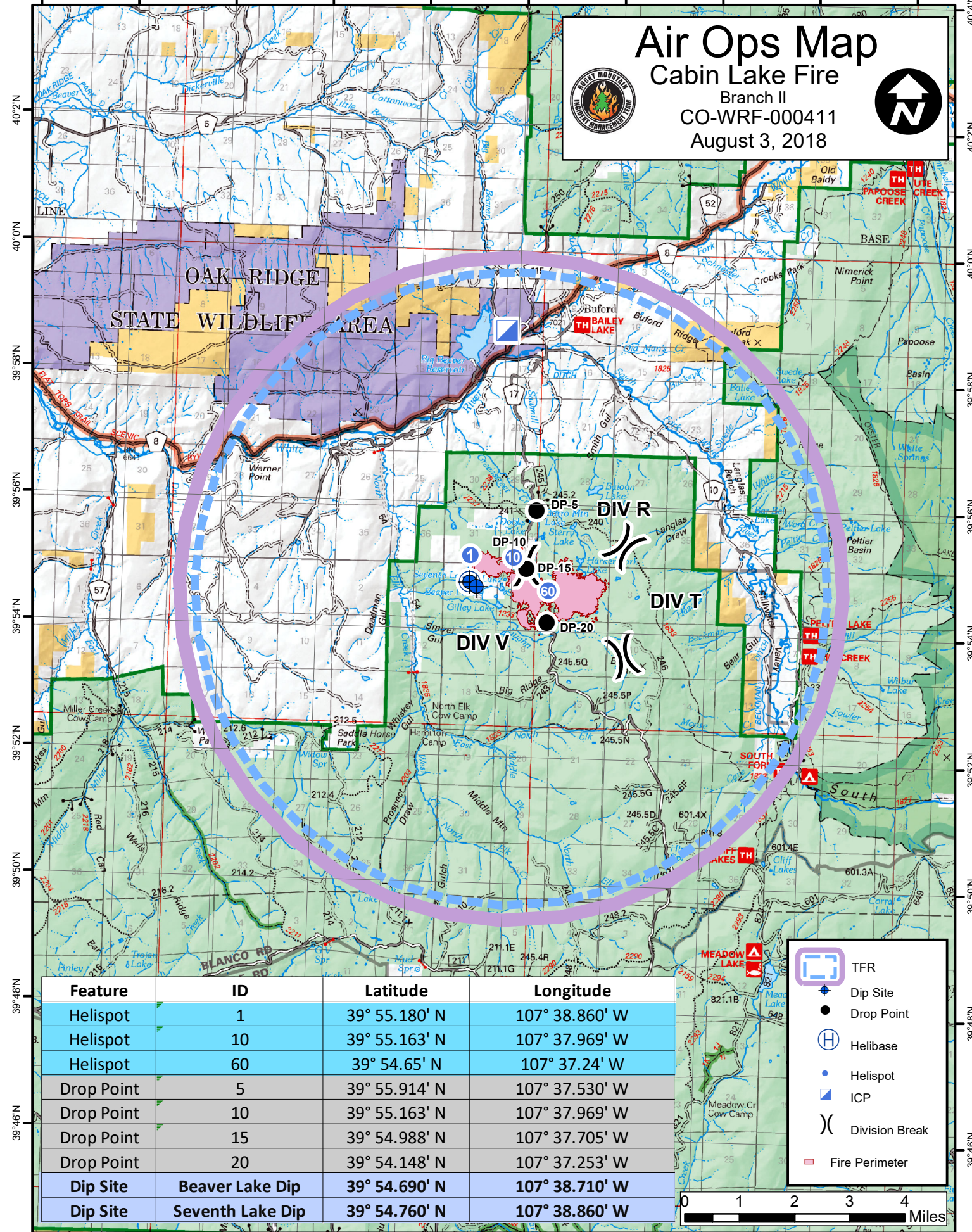
Feature	ID	Latitude	Longitude	Feature	ID	Latitude	Longitude
Helibase		39° 31.596' N	107° 43.680' W	Drop Point	9	39° 24.864' N	107° 52.830' W
Helispot	1	39° 25.532' N	107° 54.947' W	Drop Point	31	39° 24.074' N	107° 56.819' W
Helispot	2	39° 24.663' N	107° 52.630' W	Drop Point	33	39° 24.150' N	107° 54.824' W
Helispot	4	39° 27.707' N	107° 55.812' W	Drop Point	5	39° 25.371' N	107° 54.821' W
Helispot	20	39° 21.264' N	107° 57.512' W	Drop Point	7	39° 24.375' N	107° 54.069' W
Helispot	30	39° 24.150' N	107° 54.824' W	Dip Site	Battlement Reservoir	39° 22.410' N	107° 55.840' W
Incident Command Post		39° 26.517' N	108° 2.993' W	Dip Site	Battlement Mesa	39° 23.900' N	107° 52.300' W



Air Ops Map

Cabin Lake Fire

Branch II
CO-WRF-000411
August 3, 2018



Feature	ID	Latitude	Longitude
Helispot	1	39° 55.180' N	107° 38.860' W
Helispot	10	39° 55.163' N	107° 37.969' W
Helispot	60	39° 54.65' N	107° 37.24' W
Drop Point	5	39° 55.914' N	107° 37.530' W
Drop Point	10	39° 55.163' N	107° 37.969' W
Drop Point	15	39° 54.988' N	107° 37.705' W
Drop Point	20	39° 54.148' N	107° 37.253' W
Dip Site	Beaver Lake Dip	39° 54.690' N	107° 38.710' W
Dip Site	Seventh Lake Dip	39° 54.760' N	107° 38.860' W

- TFR
- Dip Site
- Drop Point
- Helibase
- Helispot
- ICP
- Division Break
- Fire Perimeter

