

Air Ops Map

Cache Creek Fire

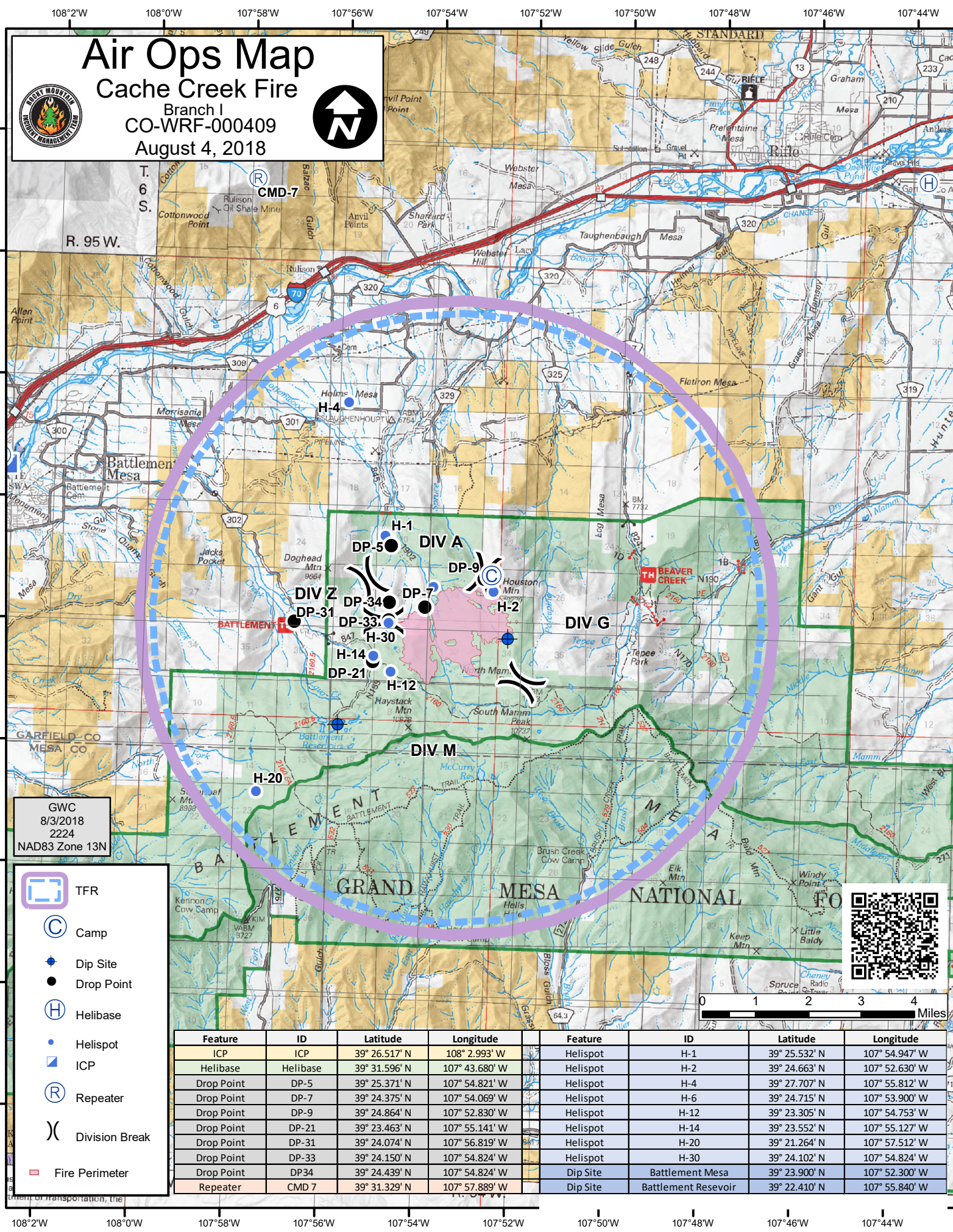
Branch I
CO-WRF-000409
August 4, 2018



Air Ops Map

Cabin Lake Fire

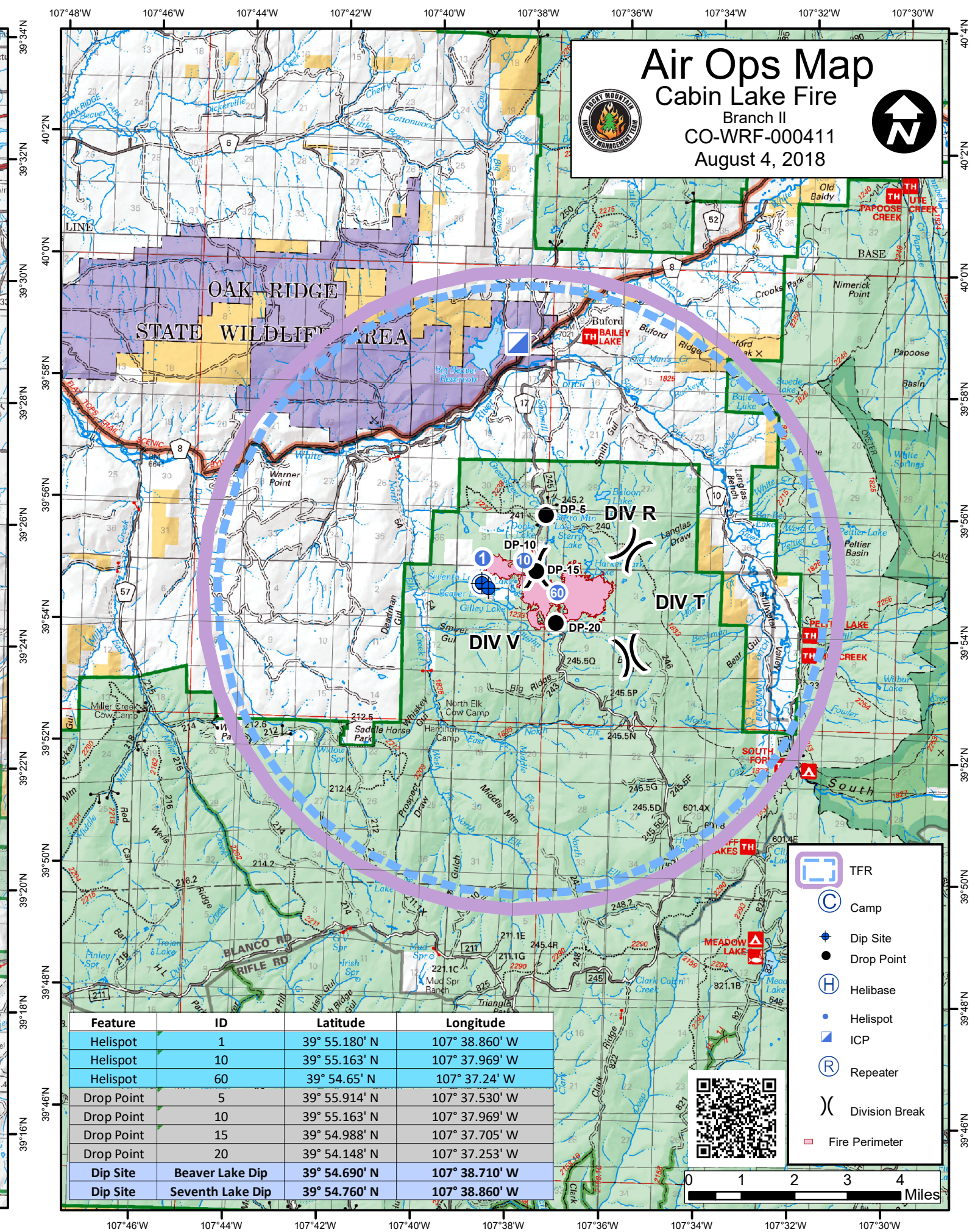
Branch II
CO-WRF-000411
August 4, 2018



GWC
8/3/2018
2224
NAD83 Zone 13N

- TFR
- Camp
- Dip Site
- Drop Point
- Helibase
- Helispot
- ICP
- Repeater
- Division Break
- Fire Perimeter

Feature	ID	Latitude	Longitude	Feature	ID	Latitude	Longitude
ICP	ICP	39° 26.517' N	108° 2.993' W	Helispot	H-1	39° 25.532' N	107° 54.947' W
Helibase	Helibase	39° 31.596' N	107° 43.680' W	Helispot	H-2	39° 24.663' N	107° 52.630' W
Drop Point	DP-5	39° 25.371' N	107° 54.821' W	Helispot	H-4	39° 27.707' N	107° 55.812' W
Drop Point	DP-7	39° 24.375' N	107° 54.069' W	Helispot	H-6	39° 24.715' N	107° 53.900' W
Drop Point	DP-9	39° 24.864' N	107° 52.830' W	Helispot	H-12	39° 23.305' N	107° 54.753' W
Drop Point	DP-21	39° 23.463' N	107° 55.141' W	Helispot	H-14	39° 23.552' N	107° 55.127' W
Drop Point	DP-31	39° 24.074' N	107° 56.819' W	Helispot	H-20	39° 21.264' N	107° 57.512' W
Drop Point	DP-33	39° 24.150' N	107° 54.824' W	Helispot	H-30	39° 24.102' N	107° 54.824' W
Drop Point	DP34	39° 24.439' N	107° 54.824' W	Dip Site	Battlement Mesa	39° 23.900' N	107° 52.300' W
Repeater	CMD 7	39° 31.329' N	107° 57.889' W	Dip Site	Battlement Reservoir	39° 22.410' N	107° 55.840' W



Feature	ID	Latitude	Longitude
Helispot	1	39° 55.180' N	107° 38.860' W
Helispot	10	39° 55.163' N	107° 37.969' W
Helispot	60	39° 54.65' N	107° 37.24' W
Drop Point	5	39° 55.914' N	107° 37.530' W
Drop Point	10	39° 55.163' N	107° 37.969' W
Drop Point	15	39° 54.988' N	107° 37.705' W
Drop Point	20	39° 54.148' N	107° 37.253' W
Dip Site	Beaver Lake Dip	39° 54.690' N	107° 38.710' W
Dip Site	Seventh Lake Dip	39° 54.760' N	107° 38.860' W

- TFR
- Camp
- Dip Site
- Drop Point
- Helibase
- Helispot
- ICP
- Repeater
- Division Break
- Fire Perimeter

