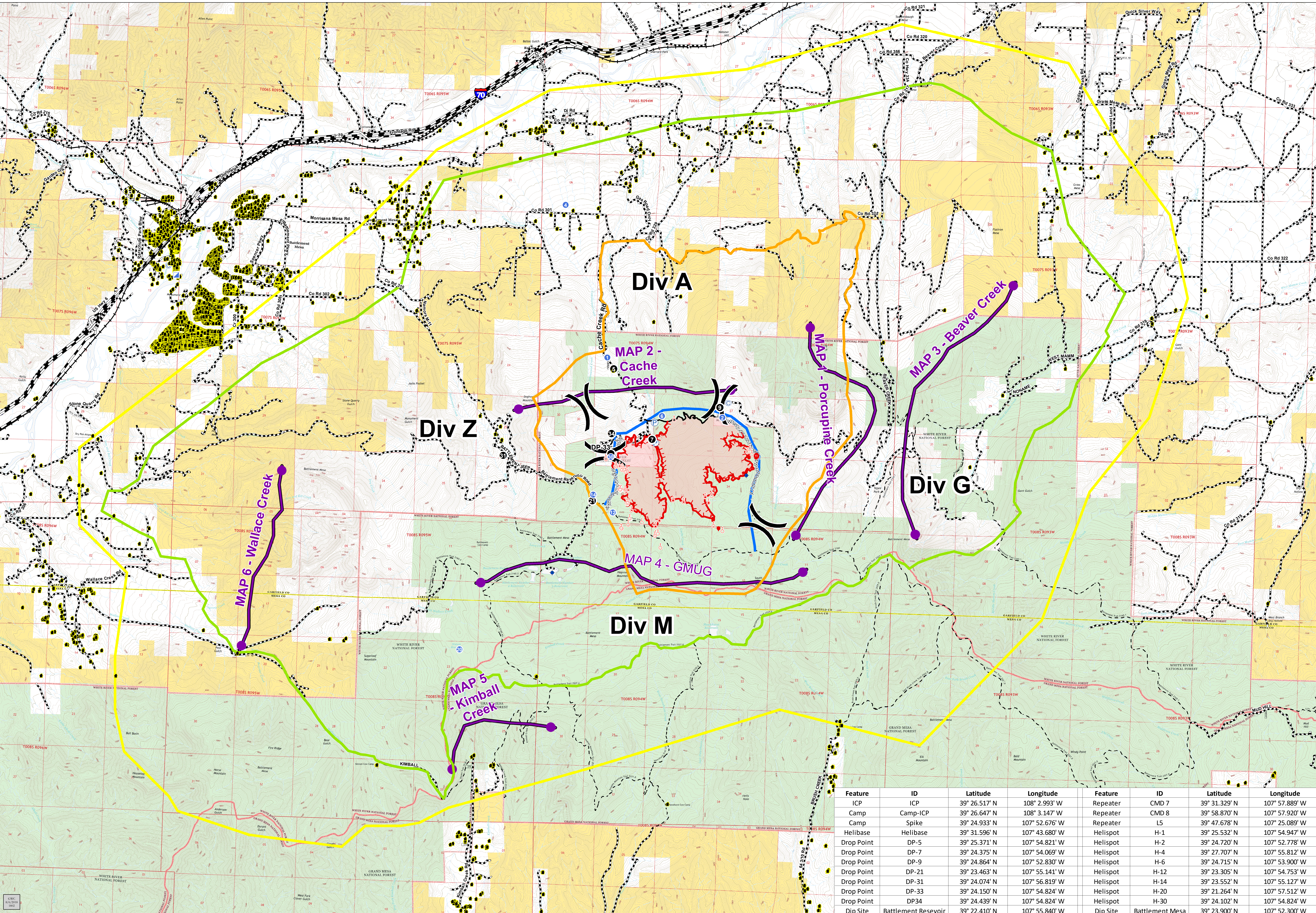
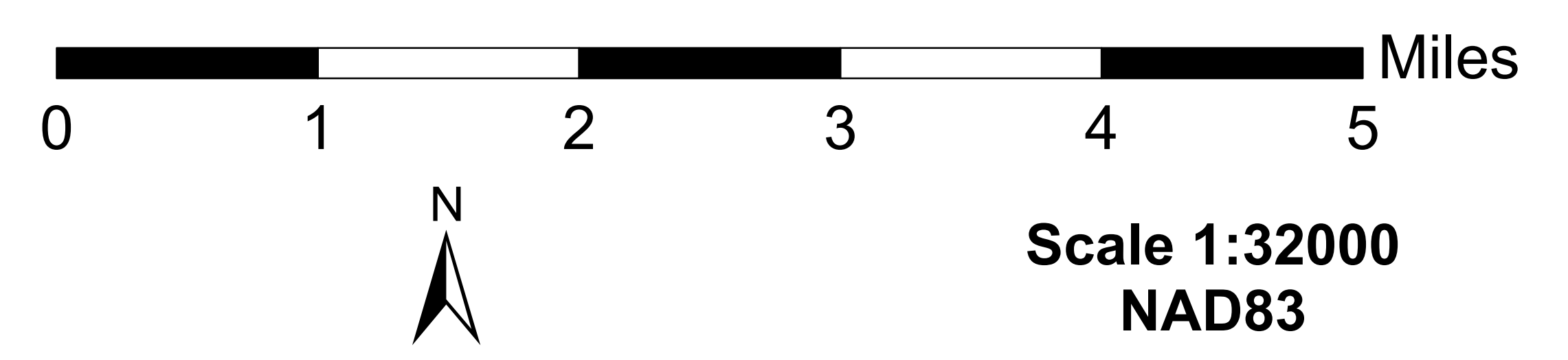


- Legend**
- Structure
 - Drop Point
 - Helispot
 - Dip Site
 - Spot Fire
 - Division Break
 - Roads
 - Uncontrolled Fire Edge
 - Completed Dozer Line
 - Completed Line
 - MAP

- PACE**
- Primary
 - Alternate
 - Contingency
 - Emergency

- Land Ownership**
- Bureau of Land Management
 - Private
 - US Forest Service

**Cache Creek Fire
Situation Map**
Branch I
CO-WRF-000409
August 6, 2018



Feature	ID	Latitude	Longitude	Feature	ID	Latitude	Longitude
ICP	ICP	39° 26.517' N	108° 2.993' W	Repeater	CMD 7	39° 31.329' N	107° 57.889' W
Camp	Camp-ICP	39° 26.647' N	108° 3.147' W	Repeater	CMD 8	39° 58.870' N	107° 57.920' W
Camp	Spike	39° 24.933' N	107° 52.676' W	Repeater	L5	39° 47.678' N	107° 25.089' W
Helibase	Helibase	39° 31.596' N	107° 43.680' W	Helispot	H-1	39° 25.532' N	107° 54.947' W
Drop Point	DP-5	39° 25.371' N	107° 54.821' W	Helispot	H-2	39° 24.720' N	107° 52.778' W
Drop Point	DP-7	39° 24.375' N	107° 54.069' W	Helispot	H-4	39° 27.707' N	107° 55.812' W
Drop Point	DP-9	39° 24.864' N	107° 52.830' W	Helispot	H-6	39° 24.715' N	107° 53.900' W
Drop Point	DP-21	39° 23.463' N	107° 55.141' W	Helispot	H-12	39° 23.305' N	107° 54.753' W
Drop Point	DP-31	39° 24.074' N	107° 56.819' W	Helispot	H-14	39° 23.552' N	107° 55.127' W
Drop Point	DP-33	39° 24.150' N	107° 54.824' W	Helispot	H-20	39° 21.264' N	107° 57.512' W
Drop Point	DP34	39° 24.439' N	107° 54.824' W	Helispot	H-30	39° 24.102' N	107° 54.824' W
Dip Site	Battlement Reservoir	39° 22.410' N	107° 55.840' W	Dip Site	Battlement Mesa	39° 23.900' N	107° 52.300' W