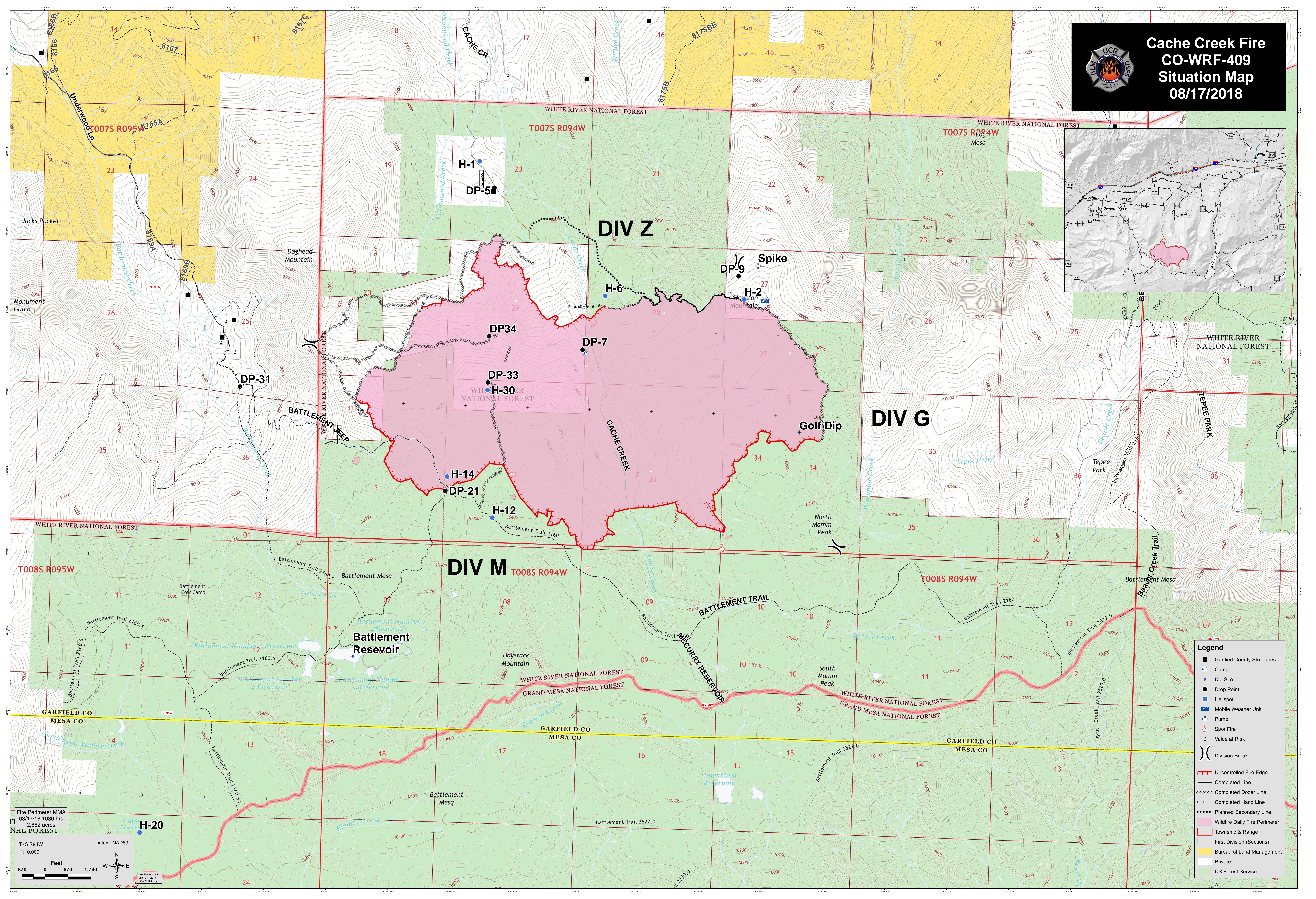
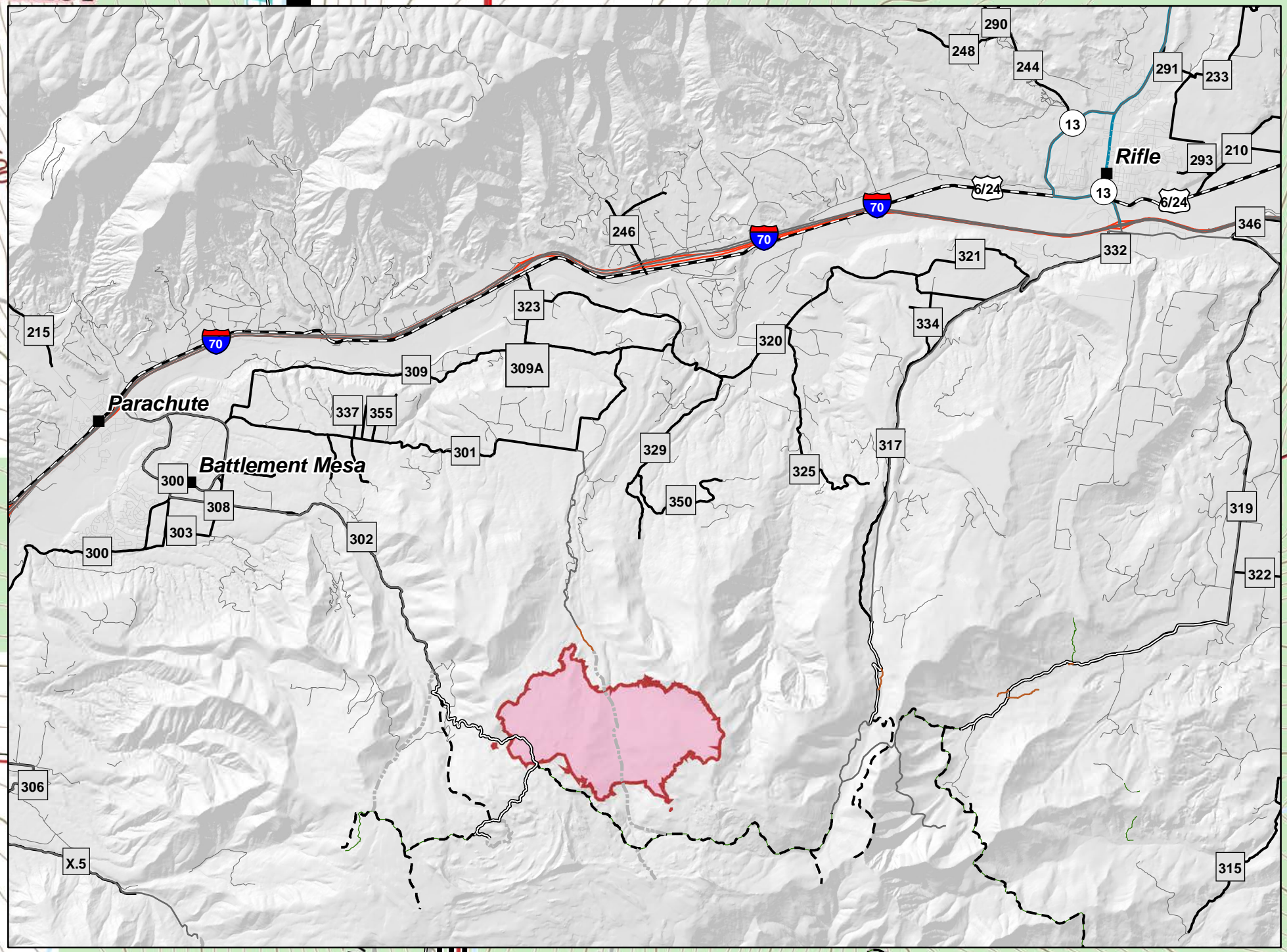


Cache Creek Fire CO-WRF-409 Situation Map 08/17/2018



| Legend | |
|--------|-------------------------------|
| ■ | Garfield County Structures |
| ⊙ | Camp |
| ● | Dip Site |
| • | Drop Point |
| ⊙ | Helispot |
| WX | Mobile Weather Unit |
| ⊙ | Pump |
| ⊙ | Spot Fire |
| ⊙ | Value at Risk |
| ⊙ | Division Break |
| — | Uncontrolled Fire Edge |
| — | Completed Line |
| — | Completed Dozer Line |
| — | Completed Hand Line |
| — | Planned Secondary Line |
| — | Wildfire Daily Fire Perimeter |
| — | Township & Range |
| — | First Division (Sections) |
| — | Bureau of Land Management |
| — | Private |
| — | US Forest Service |

Fire Perimeter MMA
08/17/18 1030 hrs
2,682 acres

T7S R94W
1:10,000

Datum: NAD83

870 0 870 1,740 Feet

Watsco Reservoir

H-20

View Name: MMA
Date: 08/17/2018
Time: 1:43:08 PM