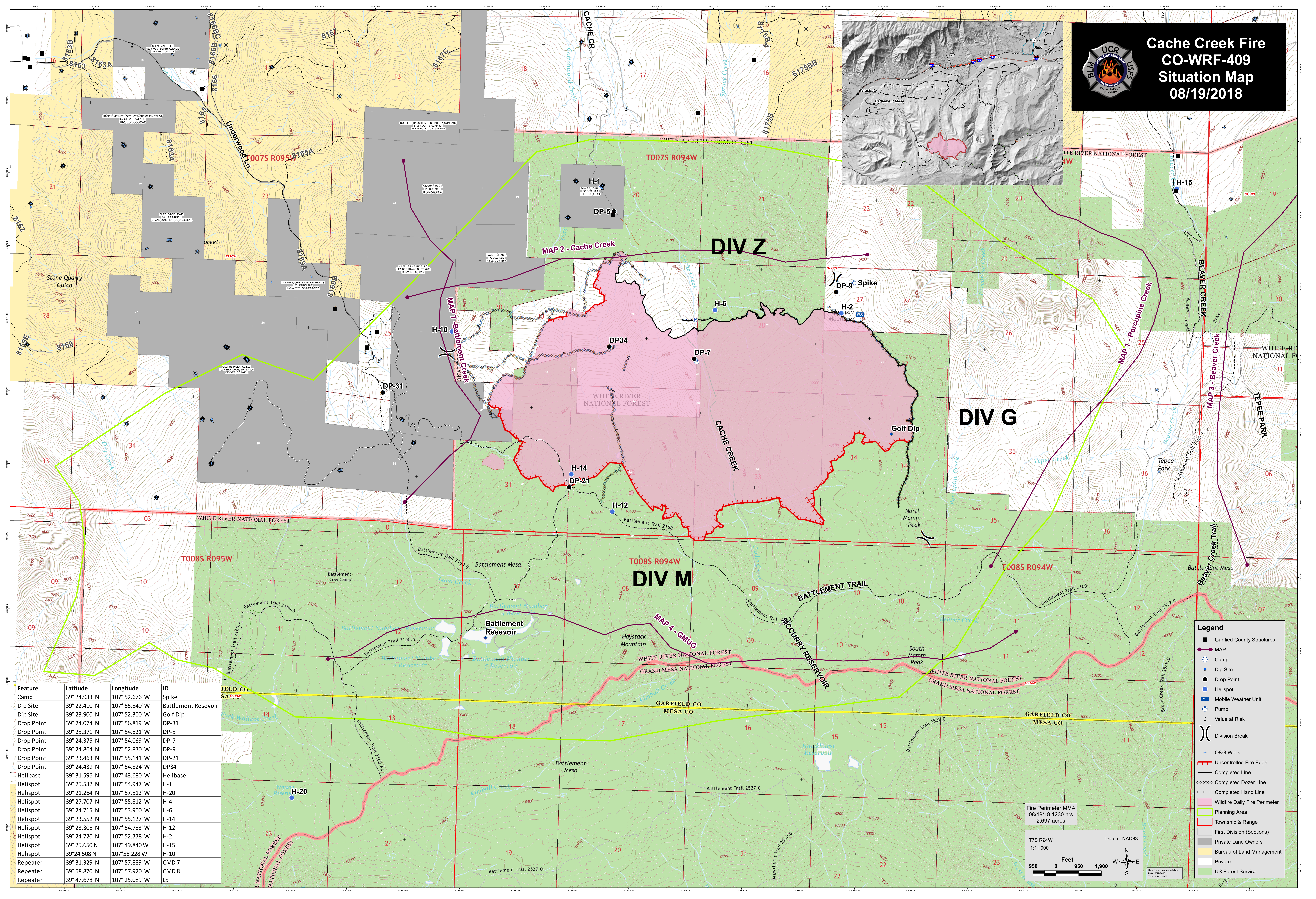
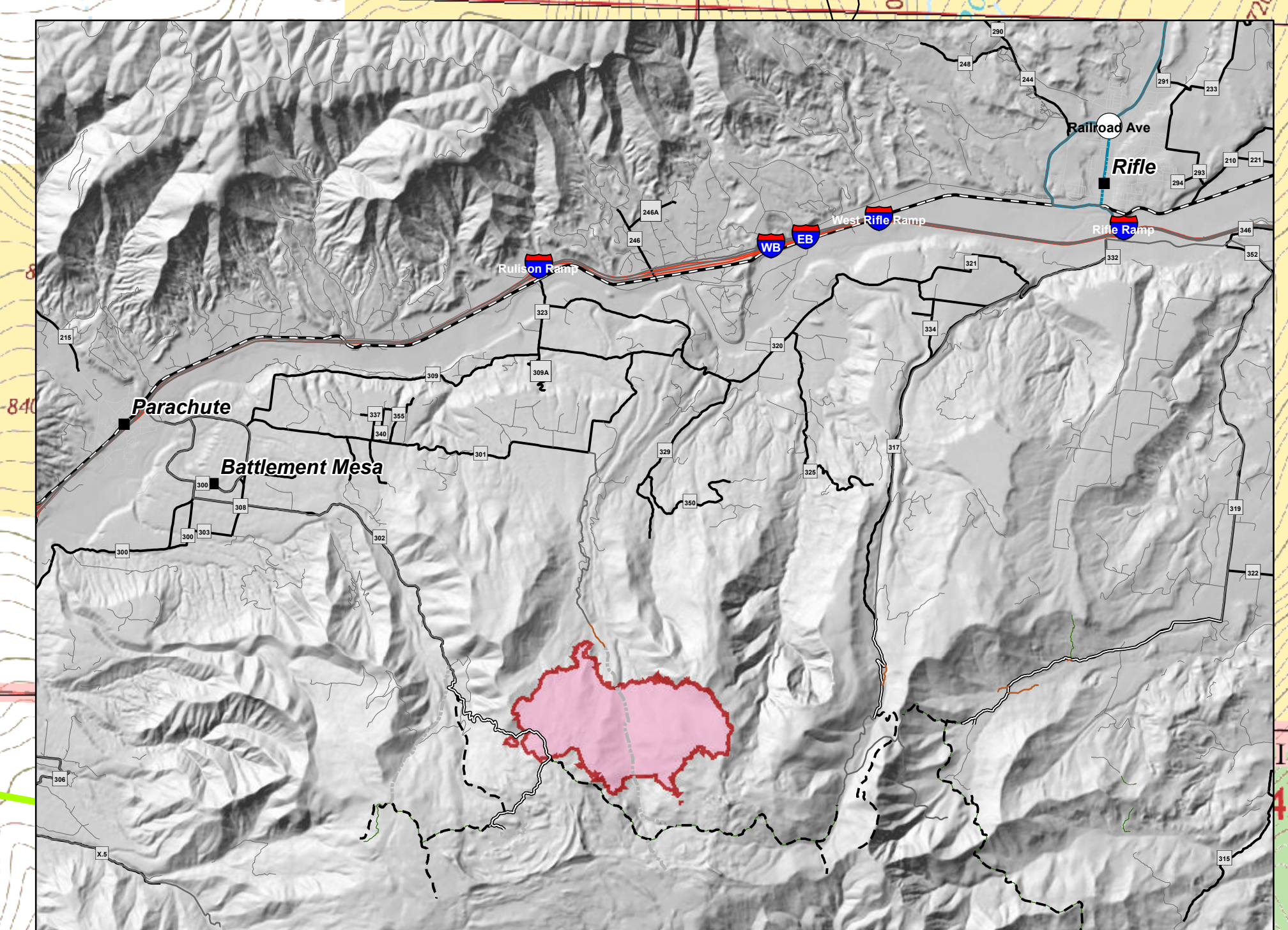




Cache Creek Fire CO-WRF-409 Situation Map 08/19/2018

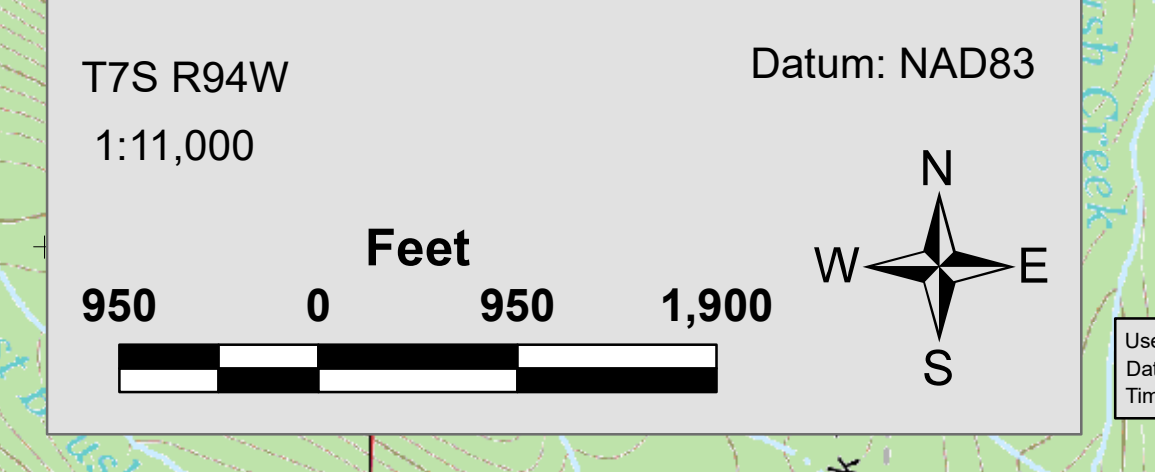


Feature	Latitude	Longitude	ID
Camp	39° 24.933' N	107° 52.676' W	Spike
Dip Site	39° 22.410' N	107° 55.840' W	Battlement Reservoir
Dip Site	39° 23.900' N	107° 52.300' W	Golf Dip
Drop Point	39° 24.074' N	107° 56.819' W	DP-31
Drop Point	39° 25.371' N	107° 54.821' W	DP-5
Drop Point	39° 24.375' N	107° 54.069' W	DP-7
Drop Point	39° 24.864' N	107° 52.830' W	DP-9
Drop Point	39° 23.463' N	107° 55.141' W	DP-21
Drop Point	39° 24.439' N	107° 54.824' W	DP34
Helibase	39° 31.596' N	107° 43.680' W	Helibase
Helispot	39° 25.532' N	107° 54.947' W	H-1
Helispot	39° 21.264' N	107° 57.512' W	H-20
Helispot	39° 27.707' N	107° 55.812' W	H-4
Helispot	39° 24.715' N	107° 53.900' W	H-6
Helispot	39° 23.552' N	107° 55.127' W	H-14
Helispot	39° 23.305' N	107° 54.753' W	H-12
Helispot	39° 24.720' N	107° 52.778' W	H-2
Helispot	39° 25.650' N	107° 49.840' W	H-15
Helispot	39° 24.508' N	107° 56.228' W	H-10
Repeater	39° 31.329' N	107° 57.889' W	CMD 7
Repeater	39° 58.870' N	107° 57.920' W	CMD 8
Repeater	39° 47.678' N	107° 25.089' W	LS

Legend

- Map of Garfield County Structures
- Camp
- Dip Site
- Helispot
- Mobile Weather Unit
- Pump
- Value at Risk
- Division Break
- O&G Wells
- Uncontrolled Fire Edge
- Completed Line
- Completed Dozer Line
- Completed Hand Line
- Wildfire Daily Fire Perimeter
- Planning Area
- Township & Range
- First Division (Sections)
- Private Land Owners
- Bureau of Land Management
- Private
- US Forest Service

Fire Perimeter MMA
08/19/18 1230 hrs
2,697 acres



User Name: csmhudson
Date: 08/19/18
Time: 10:52 AM