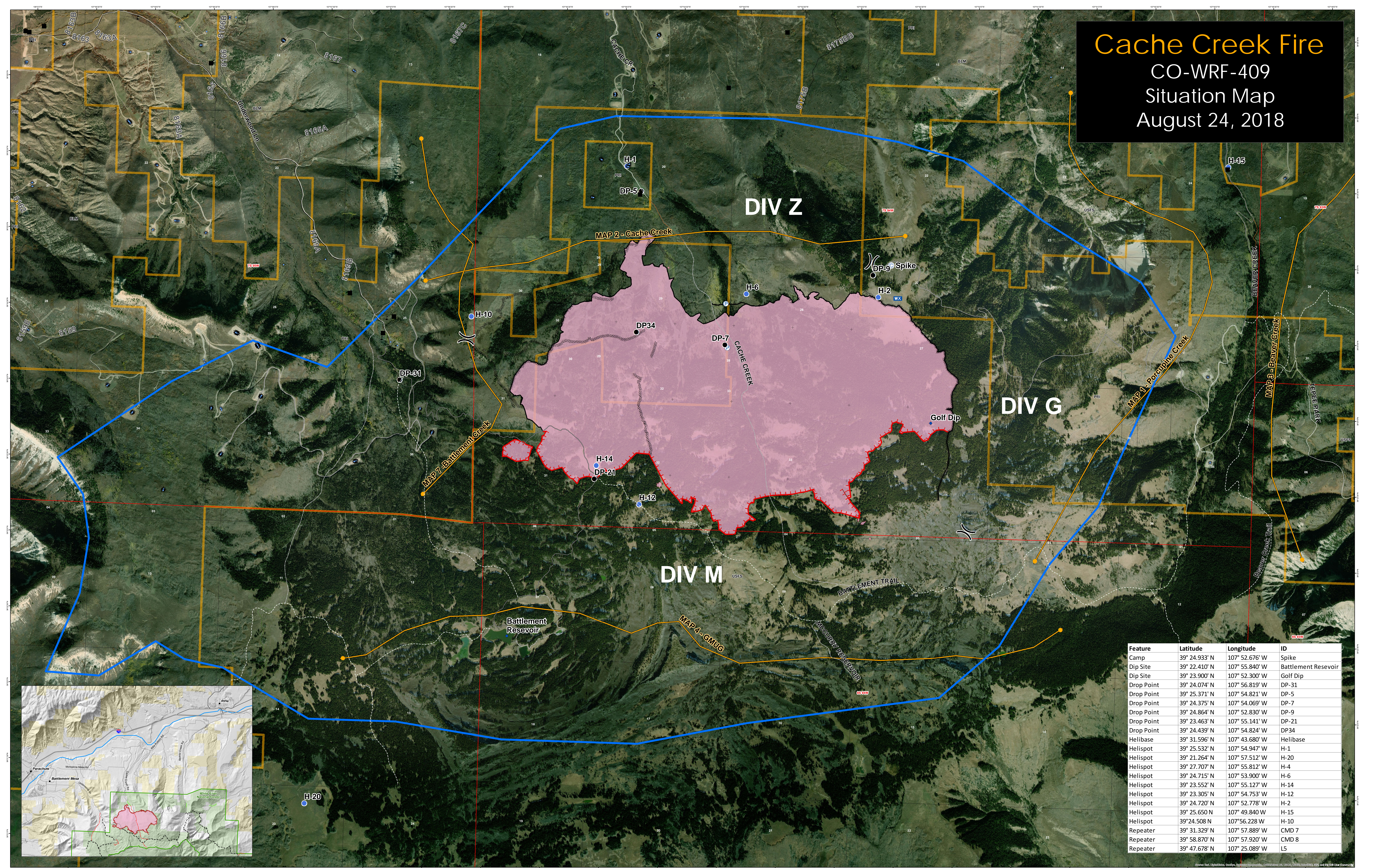


Cache Creek Fire


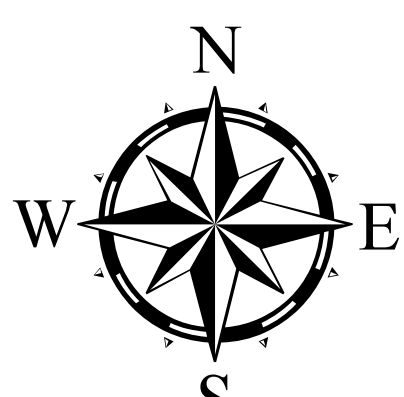

CO-WRF-409

Situation Map

August 24, 2018



Feature	Latitude	Longitude	ID
Camp	39° 24.933' N	107° 52.676' W	Spike
Dip Site	39° 22.410' N	107° 55.840' W	Battlement Reservoir
Dip Site	39° 23.900' N	107° 52.300' W	Golf Dip
Drop Point	39° 24.074' N	107° 56.819' W	DP-31
Drop Point	39° 25.371' N	107° 54.821' W	DP-5
Drop Point	39° 24.375' N	107° 54.069' W	DP-7
Drop Point	39° 24.864' N	107° 52.830' W	DP-9
Drop Point	39° 23.463' N	107° 55.141' W	DP-21
Drop Point	39° 24.439' N	107° 54.824' W	DP34
Helibase	39° 31.596' N	107° 43.680' W	Helibase
Helispot	39° 25.532' N	107° 54.947' W	H-1
Helispot	39° 21.264' N	107° 57.512' W	H-20
Helispot	39° 27.707' N	107° 55.812' W	H-4
Helispot	39° 24.715' N	107° 53.900' W	H-6
Helispot	39° 23.552' N	107° 55.127' W	H-14
Helispot	39° 23.305' N	107° 54.753' W	H-12
Helispot	39° 24.720' N	107° 52.778' W	H-2
Helispot	39° 25.650' N	107° 49.840' W	H-15
Helispot	39° 24.508' N	107° 56.228' W	H-10
Repeater	39° 31.329' N	107° 57.889' W	CMD 7
Repeater	39° 58.870' N	107° 57.920' W	CMD 8
Repeater	39° 47.678' N	107° 25.089' W	LS

Author: rjpk Date: 8/24/2018 Time: 10:54:13 AM

Legend

- Wildfire Daily Fire Perimeter (Pink shaded area)
- Garfield County Structures (Black squares)
- O&G Wells (Asterisk symbol)
- Camp (Blue circle)
- Dip Site (Blue diamond)
- Drop Point (Black circle)
- Helispot (Blue circle with 'H')
- Mobile Weather Unit (Blue circle with 'WX')
- Pump (Blue circle with 'P')
- Value at Risk (Z symbol)
- Division Break (Dashed line)
- Completed Line (Black line)
- Completed Dozer Line (Dashed line with 'X')
- Uncontrolled Fire Edge (Red dashed line)
- Completed Hand Line (Black line with 'H')
- Management Action Point (Yellow line)
- Statewide Land Ownership (No Polygon Outline) (Yellow outline)

Fire Perimeter MMA 08/20/18 2,703 acres