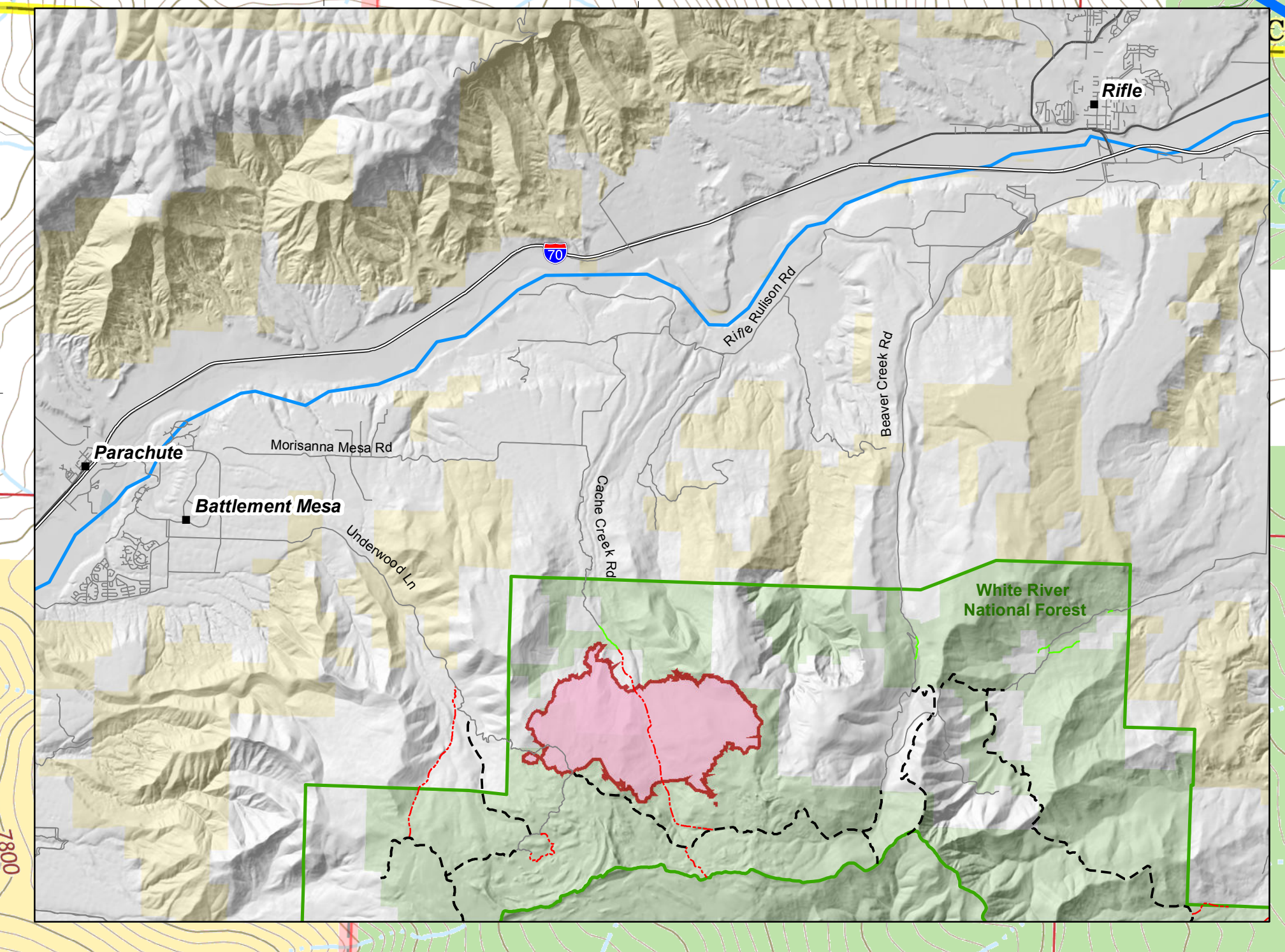
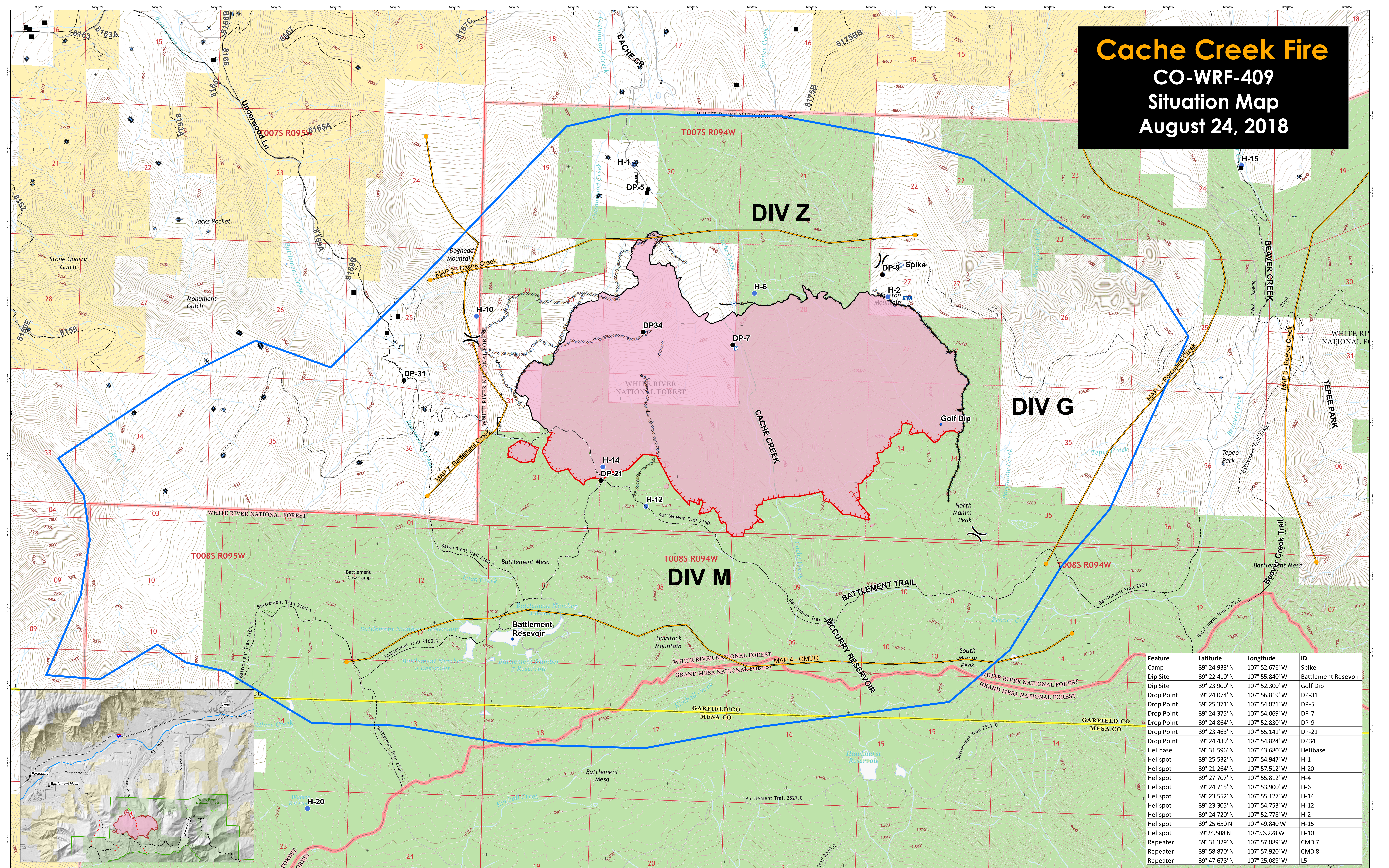


Cache Creek Fire

CO-WRF-409

Situation Map

August 24, 2018



Feature	Latitude	Longitude	ID
Camp	39° 24.933' N	107° 52.676' W	Spike
Dip Site	39° 22.410' N	107° 55.840' W	Battlement Reservoir
Dip Site	39° 23.900' N	107° 52.300' W	Golf Dip
Drop Point	39° 24.074' N	107° 56.819' W	DP-31
Drop Point	39° 25.371' N	107° 54.821' W	DP-5
Drop Point	39° 24.375' N	107° 54.069' W	DP-7
Drop Point	39° 24.864' N	107° 52.830' W	DP-9
Drop Point	39° 23.463' N	107° 55.141' W	DP-21
Drop Point	39° 24.439' N	107° 54.824' W	DP34
Helibase	39° 31.596' N	107° 43.680' W	Helibase
Helispot	39° 25.532' N	107° 54.947' W	H-1
Helispot	39° 21.264' N	107° 57.512' W	H-20
Helispot	39° 27.707' N	107° 55.812' W	H-4
Helispot	39° 24.715' N	107° 53.900' W	H-6
Helispot	39° 23.552' N	107° 55.127' W	H-14
Helispot	39° 23.305' N	107° 54.753' W	H-12
Helispot	39° 24.720' N	107° 52.778' W	H-2
Helispot	39° 25.650' N	107° 49.840' W	H-15
Helispot	39° 24.508' N	107° 56.228' W	H-10
Repeater	39° 31.329' N	107° 57.889' W	CMD 7
Repeater	39° 58.870' N	107° 57.920' W	CMD 8
Repeater	39° 47.678' N	107° 25.089' W	LS



UCR
UNION COUNTY RECREATION





Miles

Fire Perimeter MMA
08/20/18
2,703 acres

Legend

Wildfire Daily Fire Perimeter	Camp	Helispot	Value at Risk	Uncontrolled Fire Edge	Completed Hand Line	Bureau of Land Management
Garfield County Structures	Dip Site	Mobile Weather Unit	Division Break	Completed Line	Management Action Point	Private
O&G Wells	Drop Point	Pump	Completed Dozer Line			US Forest Service
Planning Area						