

105°21'0"W

105°20'0"W

105°19'0"W

105°18'0"W

105°17'0"W

105°16'0"W

105°15'0"W

CHATEAU FIRE CO-TLX-001290

Ops Imagery 7/3/18

IR Perimeter as of 7/2/18 2229 1,394 ac.



0 0.5 1 Miles

Datum NAD83

NB 7/3/18 1200



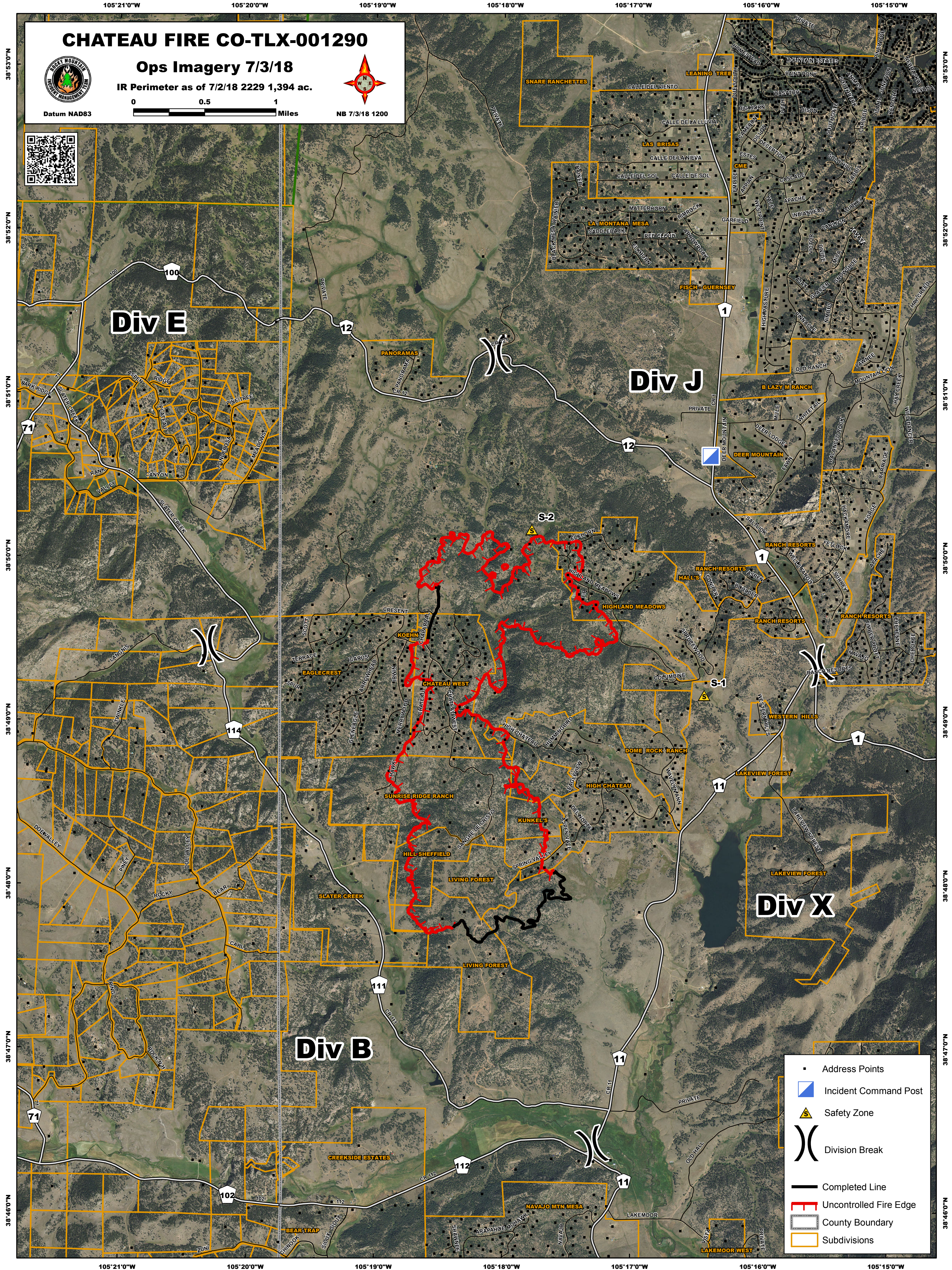
Div E

Div J

Div X

Div B

- Address Points
- Incident Command Post
- Safety Zone
- Division Break
- Completed Line
- Uncontrolled Fire Edge
- County Boundary
- Subdivisions



38°53'0"N
38°52'0"N
38°51'0"N
38°50'0"N
38°49'0"N
38°48'0"N
38°47'0"N
38°46'0"N

38°53'0"N
38°52'0"N
38°51'0"N
38°50'0"N
38°49'0"N
38°48'0"N
38°47'0"N
38°46'0"N

105°21'0"W

105°20'0"W

105°19'0"W

105°18'0"W

105°17'0"W

105°16'0"W

105°15'0"W