

105°21'0"W

105°20'0"W

105°19'0"W

105°18'0"W

105°17'0"W

105°16'0"W

105°15'0"W

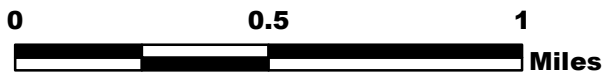
# CHATEAU FIRE CO-TLX-001290

## Operations Map 7/4/18

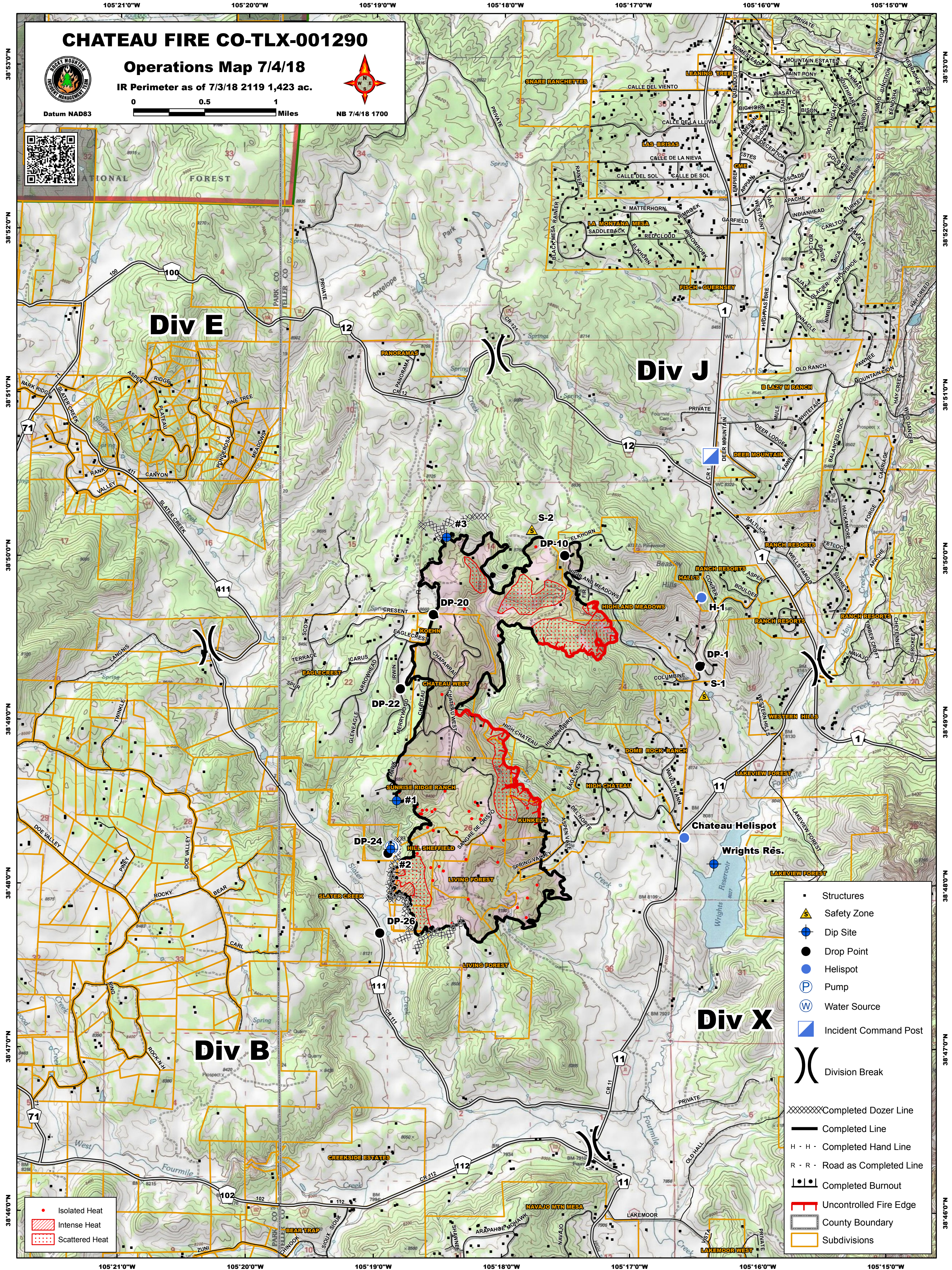
IR Perimeter as of 7/3/18 2119 1,423 ac.



Datum NAD83



NB 7/4/18 1700



38°53'0"N  
38°52'0"N  
38°51'0"N  
38°50'0"N  
38°49'0"N  
38°48'0"N  
38°47'0"N  
38°46'0"N

38°53'0"N  
38°52'0"N  
38°51'0"N  
38°50'0"N  
38°49'0"N  
38°48'0"N  
38°47'0"N  
38°46'0"N

105°21'0"W

105°20'0"W

105°19'0"W

105°18'0"W

105°17'0"W

105°16'0"W

105°15'0"W

- Isolated Heat
- Intense Heat
- Scattered Heat

- Structures
- Safety Zone
- Dip Site
- Drop Point
- Helispot
- Pump
- Water Source
- Incident Command Post
- Division Break
- Completed Dozer Line
- Completed Line
- Completed Hand Line
- Completed Road as Completed Line
- Completed Burnout
- Uncontrolled Fire Edge
- County Boundary
- Subdivisions