

105°21'0"W 105°20'0"W 105°19'0"W 105°18'0"W 105°17'0"W 105°16'0"W 105°15'0"W

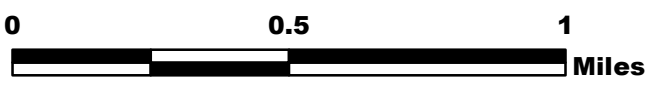
# CHATEAU FIRE CO-TLX-001290

## PIO Map 7/4/18

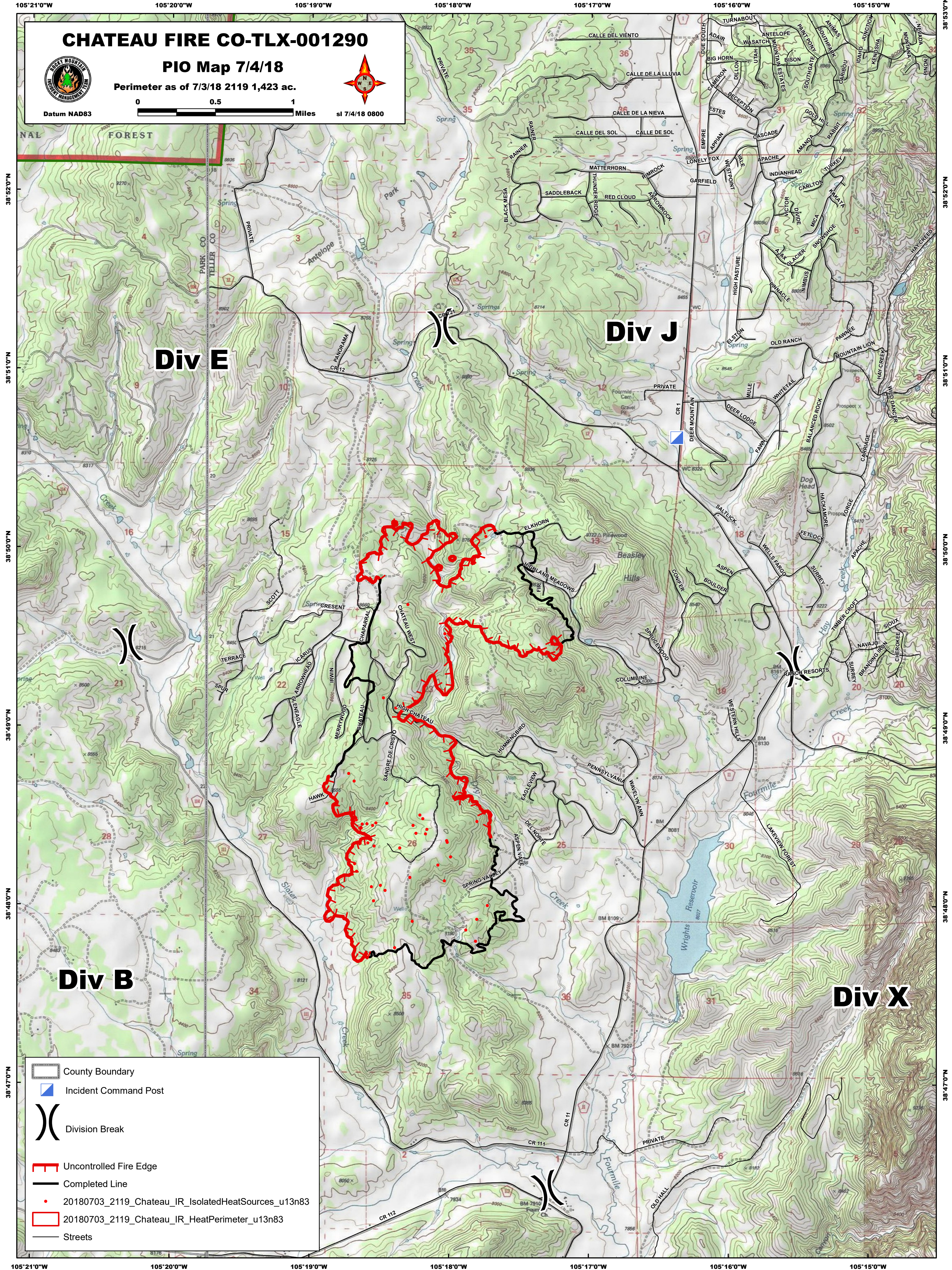
Perimeter as of 7/3/18 2119 1,423 ac.



Datum NAD83



sl 7/4/18 0800



38°52'0"N  
38°51'0"N  
38°50'0"N  
38°49'0"N  
38°48'0"N  
38°47'0"N








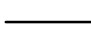
38°53'0"N  
38°52'0"N  
38°51'0"N  
38°50'0"N  
38°49'0"N  
38°48'0"N  
38°47'0"N

### Div E

### Div J

### Div B

### Div X

-  County Boundary
-  Incident Command Post
-  Division Break
-  Uncontrolled Fire Edge
-  Completed Line
-  20180703\_2119\_Chateau\_IR\_IsolatedHeatSources\_u13n83
-  20180703\_2119\_Chateau\_IR\_HeatPerimeter\_u13n83
-  Streets

105°21'0"W 105°20'0"W 105°19'0"W 105°18'0"W 105°17'0"W 105°16'0"W 105°15'0"W