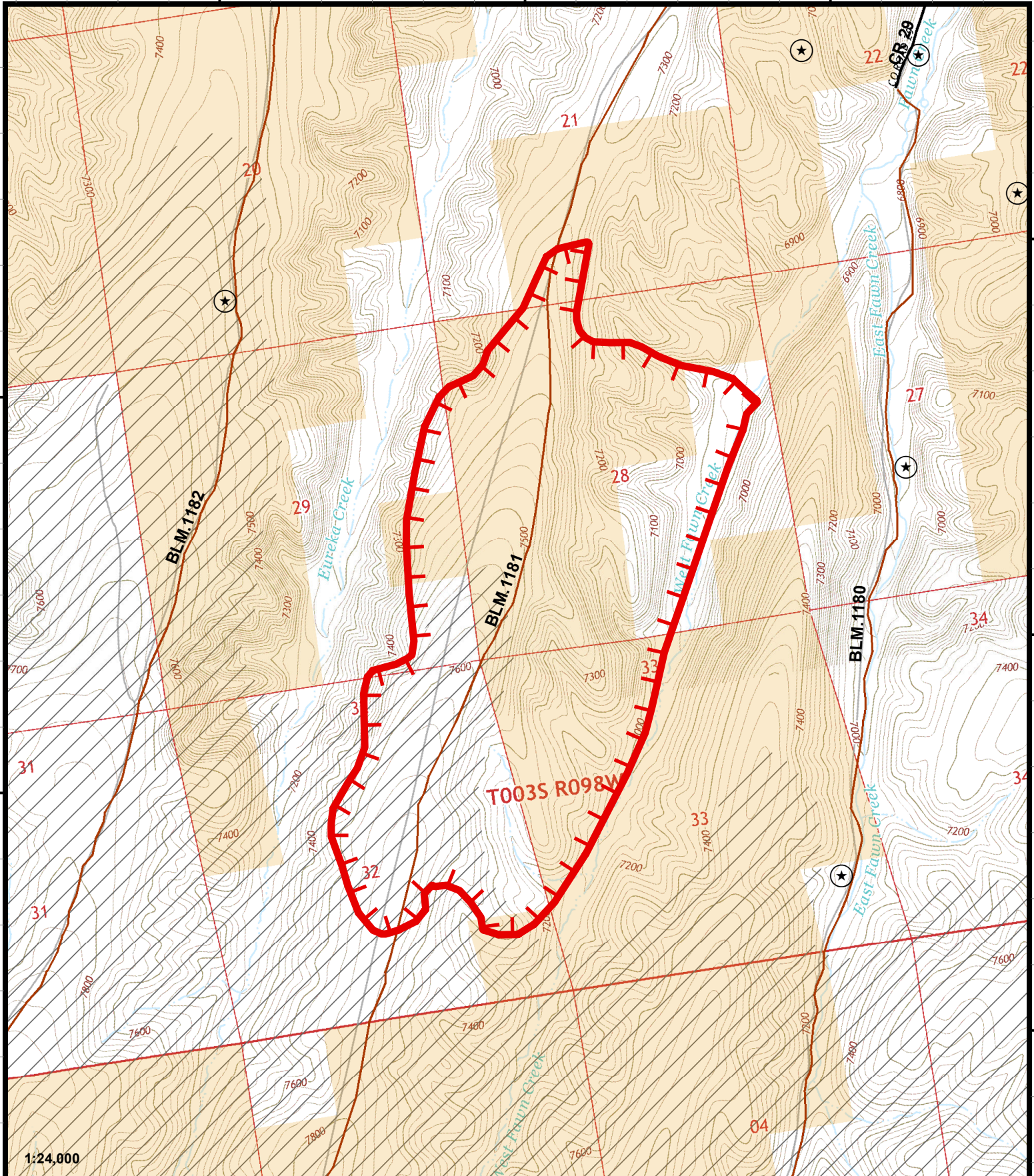


108°25'W 108°24'W 108°23'W

39°46'N 39°45'N 39°44'N



1:24,000

Fawn Fire
 CO-WRD-000230
IAP Map
 07/11/2018
 Day Shift
872 acres (total)
 Perimeter as of 07/10/2018 @ 1400
 0.5

Uncontrolled Fire Edge
 Gas Well Top Hole

Ownership
 BLM
 Sage Grouse Habitat

+9.38° E
 NWIMT11

Scan QR Code

for GeoPDF Maps

Miles