

107°55'W

107°54'W

107°53'W

107°52'W

40°8'N

40°8'N

40°7'N

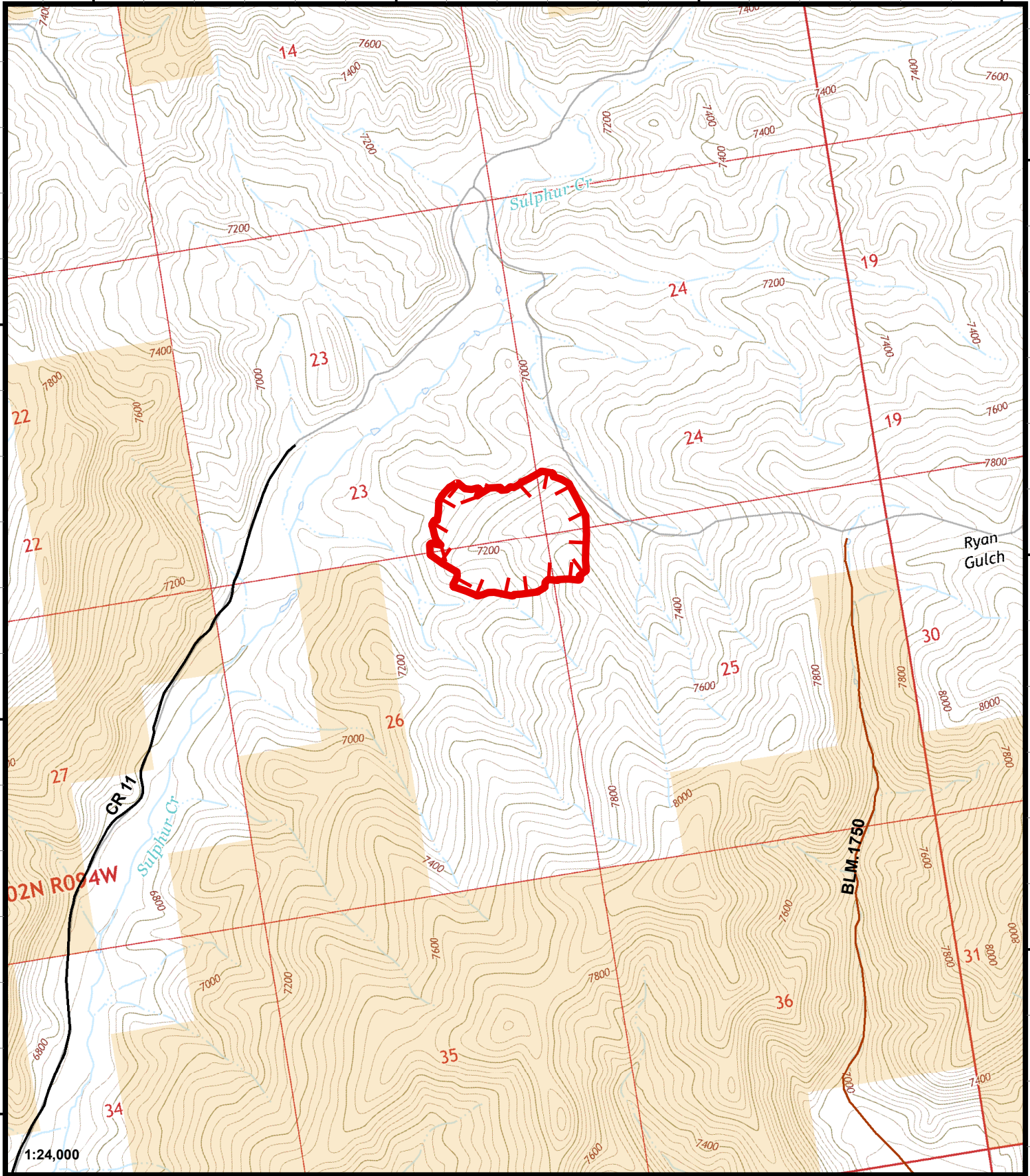
40°7'N

40°6'N

40°6'N

40°6'N

40°6'N



**Smith Fire**  
 CO-RBX-000251  
**IAP Map**

07/11/2018  
 Day Shift

**76 acres (total)**

Perimeter as of 07/10/2018 @ 1400  
 0.5



Uncontrolled Fire Edge

**Ownership**

BLM



NWIMT11

Scan QR Code

for GeoPDF Maps

