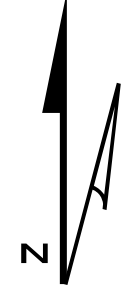


Fawn Fire

CO-RBX-000230

Briefing Map

07/12/2018
1,073 acres



1

Miles

Perimeter as of 07/11/2018 @ 2100

NWIMT11

- Gas Well Top Hole
- Water Source
- Value at Risk
- Uncontrolled Fire Edge
- Completed Line
- Completed Hand Line
- Wildfire Daily Fire Perimeter
- Initial Attack Area
- TFR
- Sage Grouse Habitat



108°27'W 108°26'W 108°25'W 108°24'W 108°23'W 108°22'W 108°21'W