

107°55'W

107°54'W

107°53'W

40°8'N

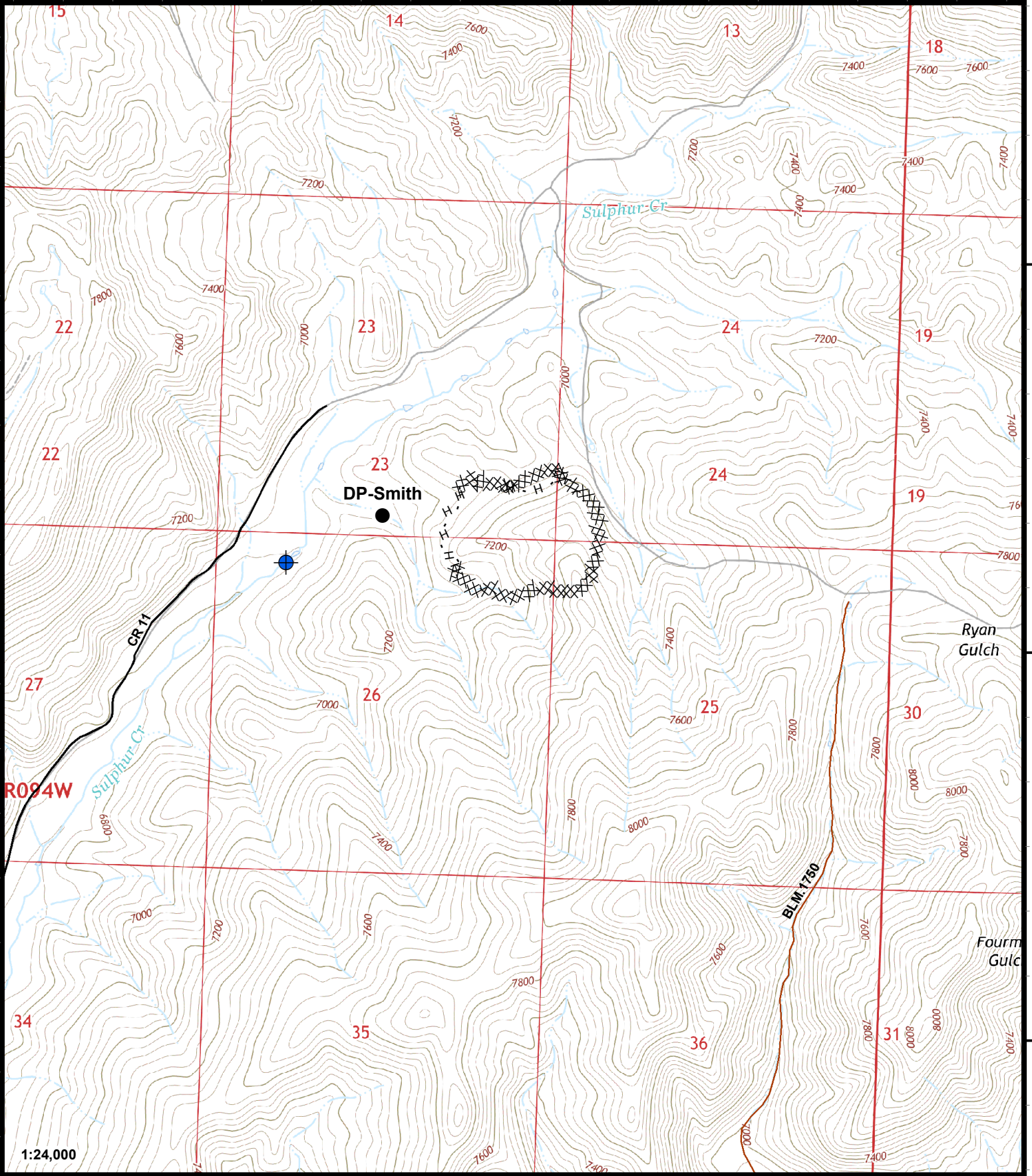
40°8'N

40°7'N





40°7'N

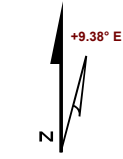
40°6'N

40°6'N



Smith Fire
 CO-RBX-000251
IAP Map
 07/13/2018
 Day Shift
 84 acres
 07/11/2018 @ 2100

-  Dip Site
-  Drop Point
-  Completed Dozer Line
-  H - H Completed Hand Line



Scan QR Code



for GeoPDF Maps

NWIMT11

