

108°8'W

108°7'W

108°6'W

39°48'N

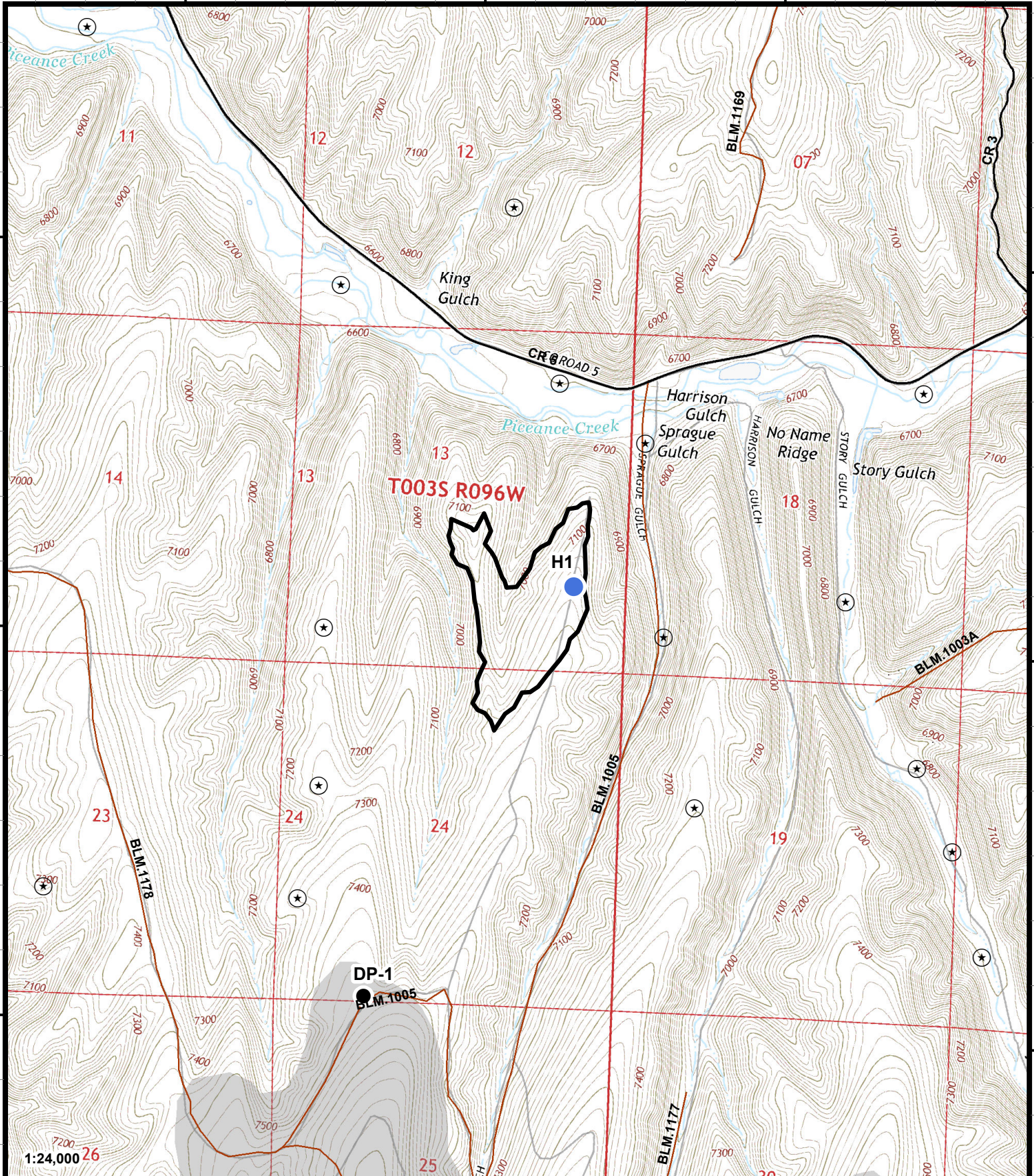
39°48'N

39°47'N

39°47'N

39°46'N

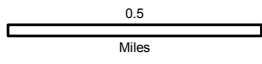
39°46'N



Sprague Fire
 CO-RBX-000249
IAP Map
 07/14/2018
 Day Shift
 91 acres
 07/11/2018 @ 2100

- Drop Point
- Helispot
- Completed Line
- ★ Gas Well Top Hole

- Sage Grouse Habitat
- ▨ T & E Species Habitat



Scan QR Code

for GeoPDF Maps