

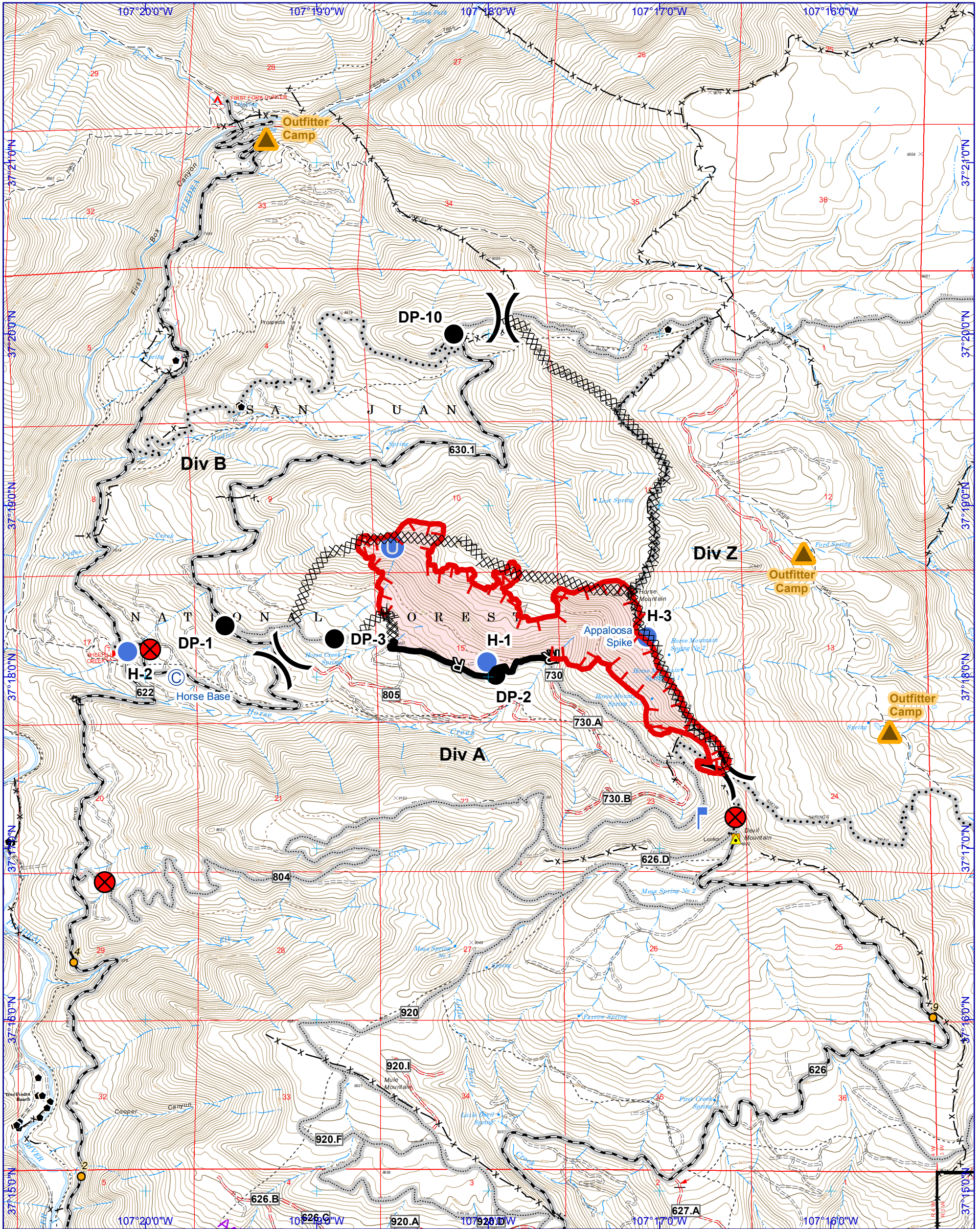


Horse Fire - Incident Action Plan Map

NAD 1983
Geographic Coordinate System

September 18, 2018 1700 hrs - 567 acres
Incident 1196 - P2L4A7

Prepared by: K.D. Tuten
9/18/2018 1728 hrs



- Division Break
- Helispot (H-#)
- Lookout Point
- Unimproved Landing Area
- Closure Point
- Spike Camp
- Outfitter Camp
- Drop Point (DP-#)
- FENCE
- Telecommunication Site - Agency
- Structure Archuleta - Comm Site Queried
- Special Use Point - Comm Site Queried
- Electric Transmission
- Structure Archuleta
- Roads Open to All Vehicles, Seasonal
- Closed System Road
- Trails Open to Motorcycles Only, Seasonal
- Trails Open to Wheeled Vehicles Only < 50" or Less in Width, Seasonal

