

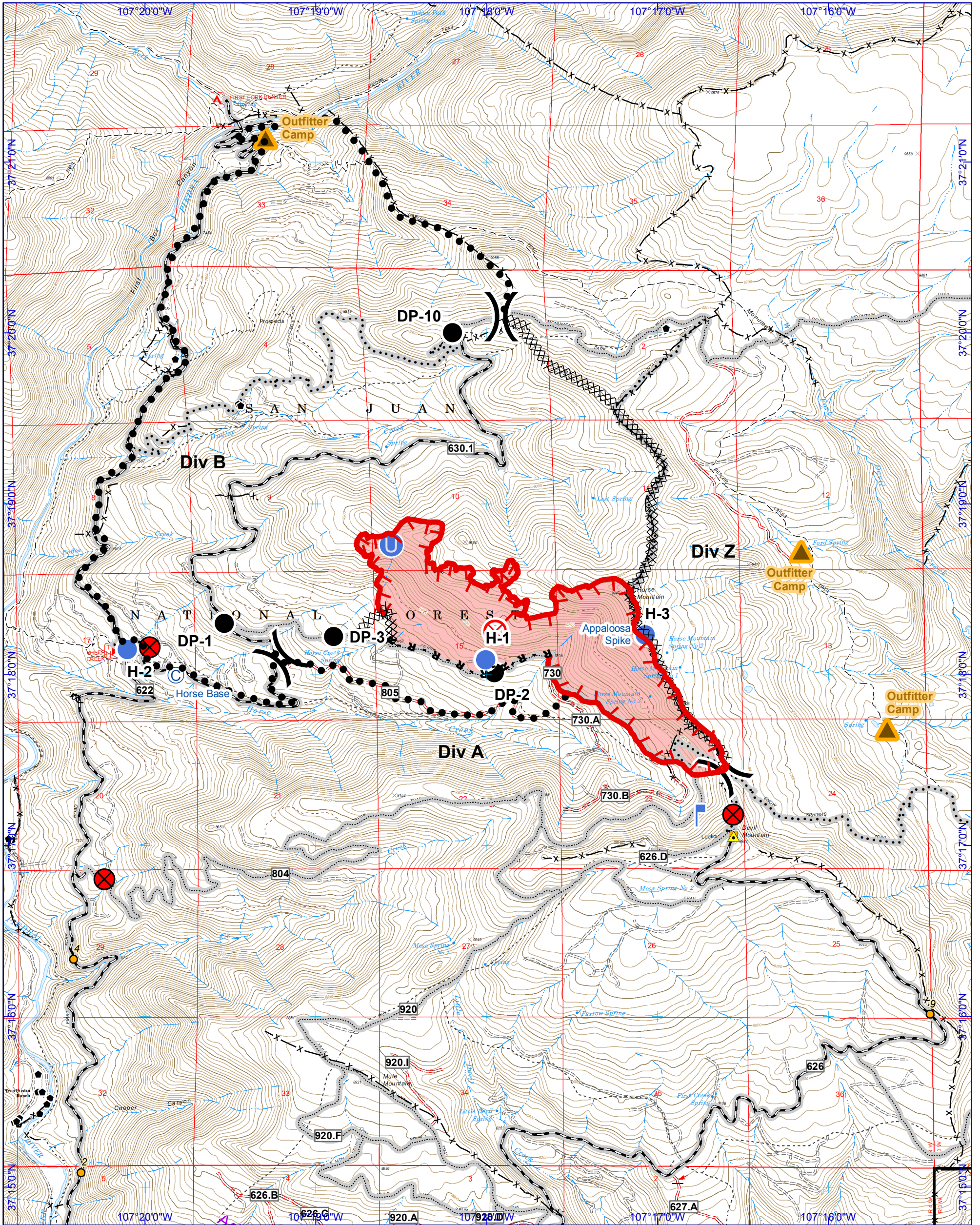


# Horse Fire - Incident Action Plan Map

NAD 1983  
Geographic Coordinate System

September 18, 2018 1700 hrs - 702 acres  
Incident 1196 - P2L4A7

Prepared by: K.D. Tuten  
9/19/2018 1800 hrs



Fire Origin: Aug. 28, 2018	Lookout Point	Unimproved Landing Area	Roads Open to All Vehicles, Seasonal
<b>R</b> - Completed Line - Road	Dozer Line	Outfitter Camp	Closed System Road
Uncontrolled Fire Edge	Division Break	Telecommunication Site - Agency	Trails Open to Motorcycles Only, Seasonal
Secondary Perimeter	Drop Point (DP-#)	Structure Archuleta - Comm Site Queried	Trails Open to Wheeled Vehicles Only < 50" or Less in Width, Seasonal
Lookout Point	Helispot (H-#)	Special Use Point - Comm Site Queried	
Closure Point	Spike Camp	Electric Transmission	
		Structure Archuleta	

