

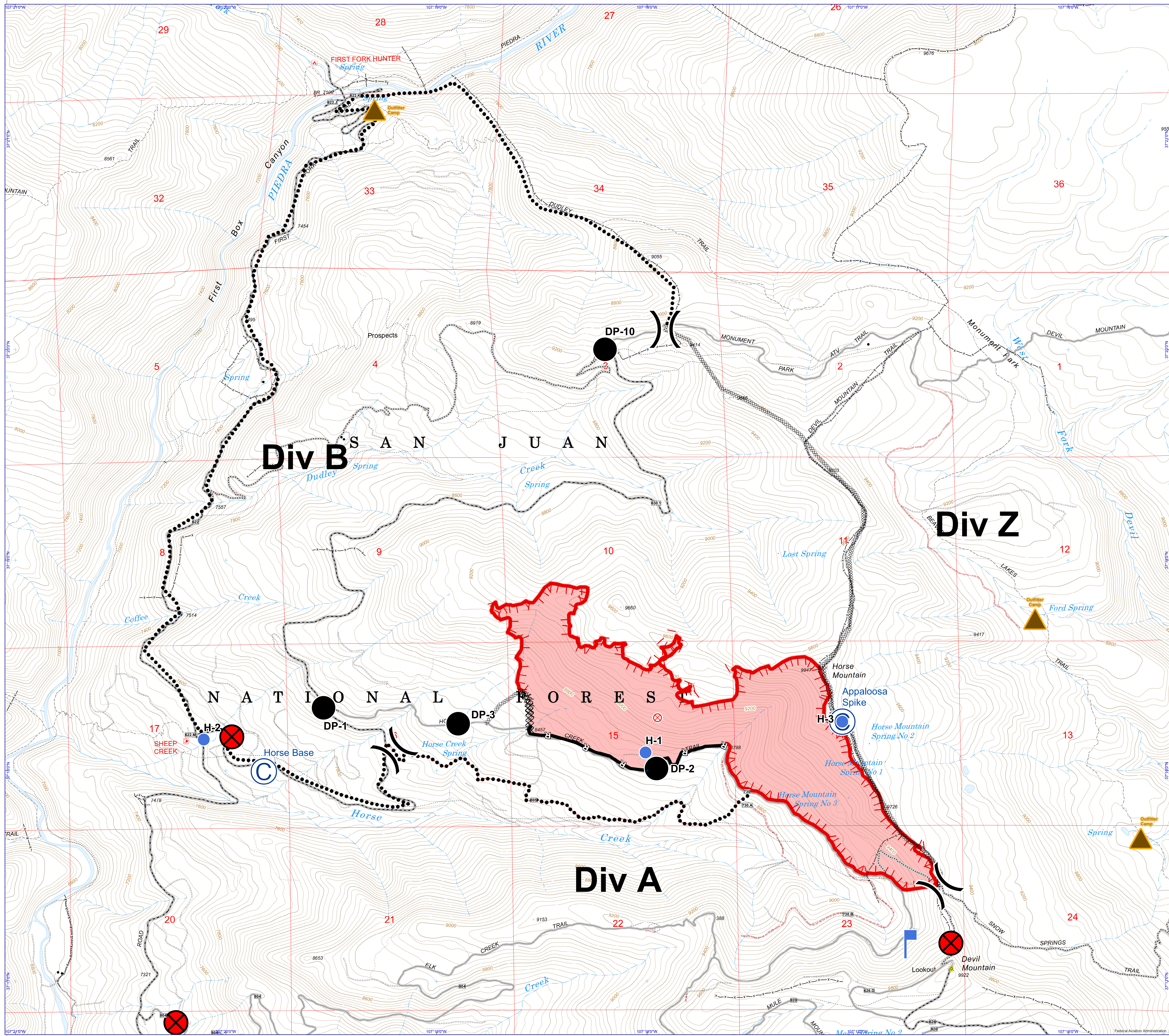
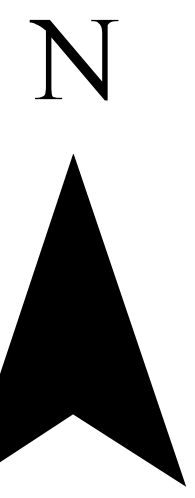


NAD 1983  
Geographic Coordinate System

# Horse Fire - Operations Map

September 19, 2018 1600 hrs - 702 acres  
Incident 1196 - P2L4A7

Prepared by: K.Tuten  
9/19/2018 1748 hrs



- Fire Origin August 28, 2018
- Completed Line - Road
- Dozer Line
- Uncontrolled Fire Edge
- Completed Dozer
- Name**
- Secondary Perimeter
- Lookout Point
- Division Break
- Helispot (H-#)
- Drop Point (DP-#)
- Closure Point
- Spike Camp
- Outfitter Camp
- TelecommunicationSite - Agency
- StructureArchuleta - Comm Site Queried
- StructureArchuleta
- FENCE
- Roads Open to All Vehicles, Seasonal
- Closed System Road
- Trails Open to Motorcycles Only, Seasonal
- Trails Open to Wheeled Vehicles Only < 50" or Less in Width, Seasonal

