

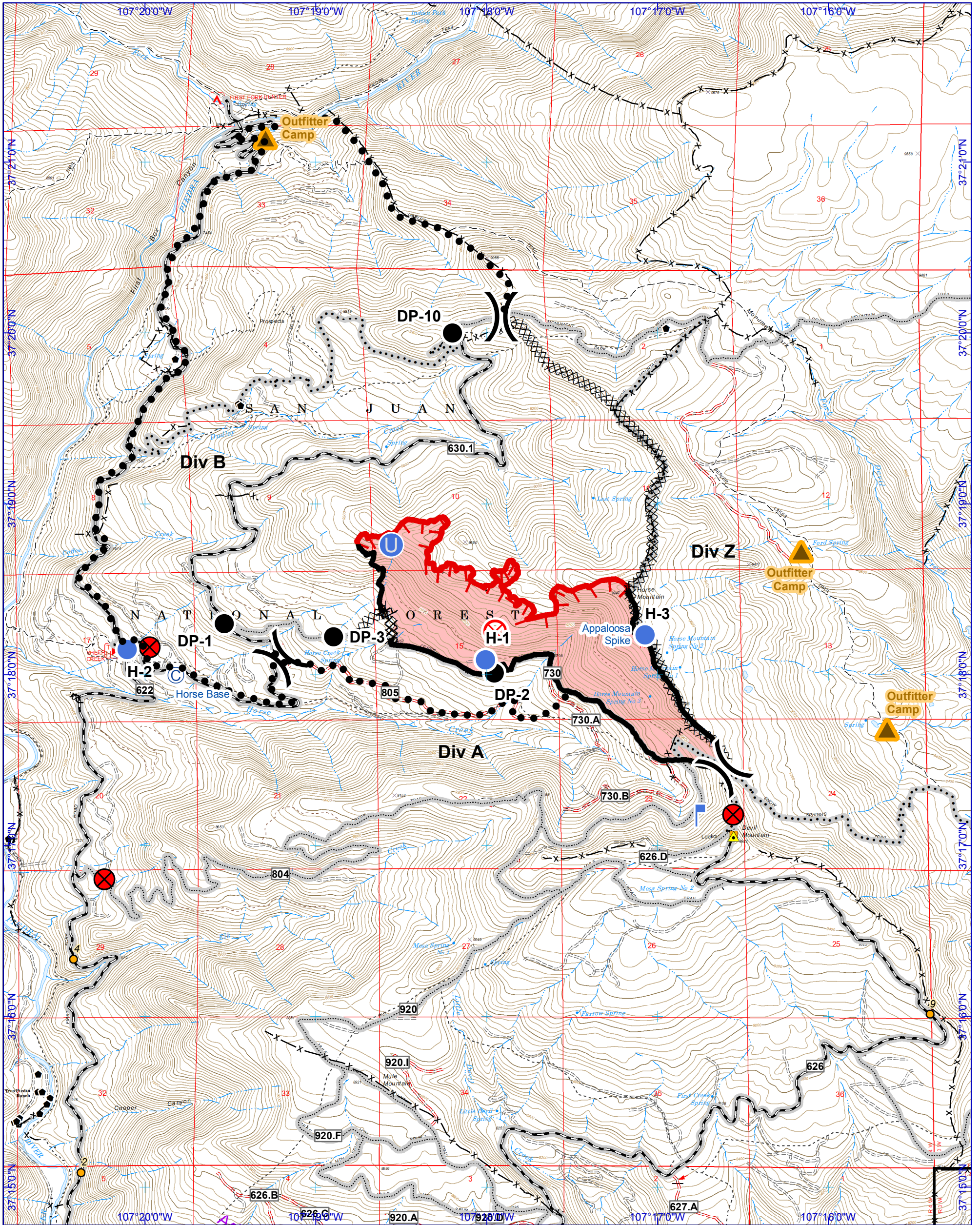


# Horse Fire - Incident Action Plan Map

NAD 1983  
Geographic Coordinate System

September 20, 2018 1700 hrs - 702 acres  
Incident 1196 - P2L4A7

Prepared by: K.D. Tuten  
9/20/2018 1823 hrs



Fire Origin: Aug. 28, 2018

Secondary Perimeter

Lookout Point

Closure Point

Spike Camp

Lookout Point

Division Break

Drop Point (DP-#)

Helispot (H-#)

Unimproved Landing Area

Outfitter Camp

FENCE

Telecommunication Site - Agency

Structure Archuleta - Comm Site Queried

Special Use Point - Comm Site Queried

Electric Transmission

Structure Archuleta

Roads Open to All Vehicles, Seasonal

Closed System Road

Trails Open to Motorcycles Only, Seasonal

Trails Open to Wheeled Vehicles Only < 50" or Less in Width, Seasonal

0 0.25 0.5 1 Miles