

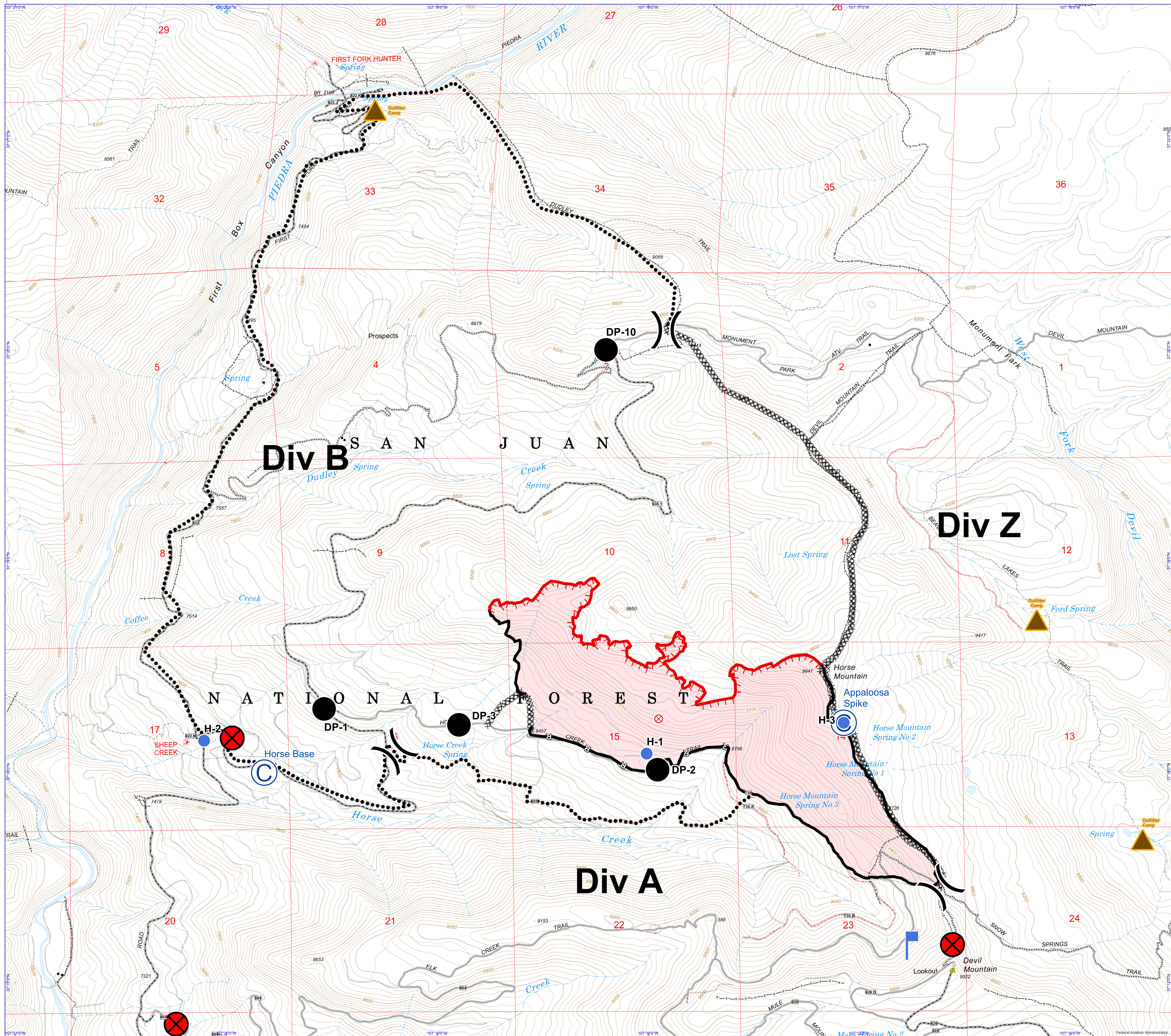
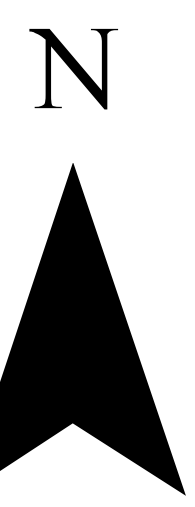


NAD 1983  
Geographic Coordinate System

# Horse Fire - Operations Map

September 20, 2018 1700 hrs - 702 acres  
Incident 1196 - P2L4A7

Prepared by: K.Tuten  
9/20/2018 1812 hrs



- Fire Origin August 28, 2018
- Completed Dozer
- Name**
- Secondary Perimeter
- Lookout Point
- Closure Point
- Spike Camp
- Outfitter Camp
- Telecommunication Site - Agency
- Structure Archuleta - Comm Site Queried
- Structure Archuleta
- FENCE
- Helispot (H-#)
- Drop Point (DP-#)
- Roads Open to All Vehicles, Seasonal
- Closed System Road
- Trails Open to Motorcycles Only, Seasonal
- Trails Open to Wheeled Vehicles Only < 50" or Less in Width, Seasonal