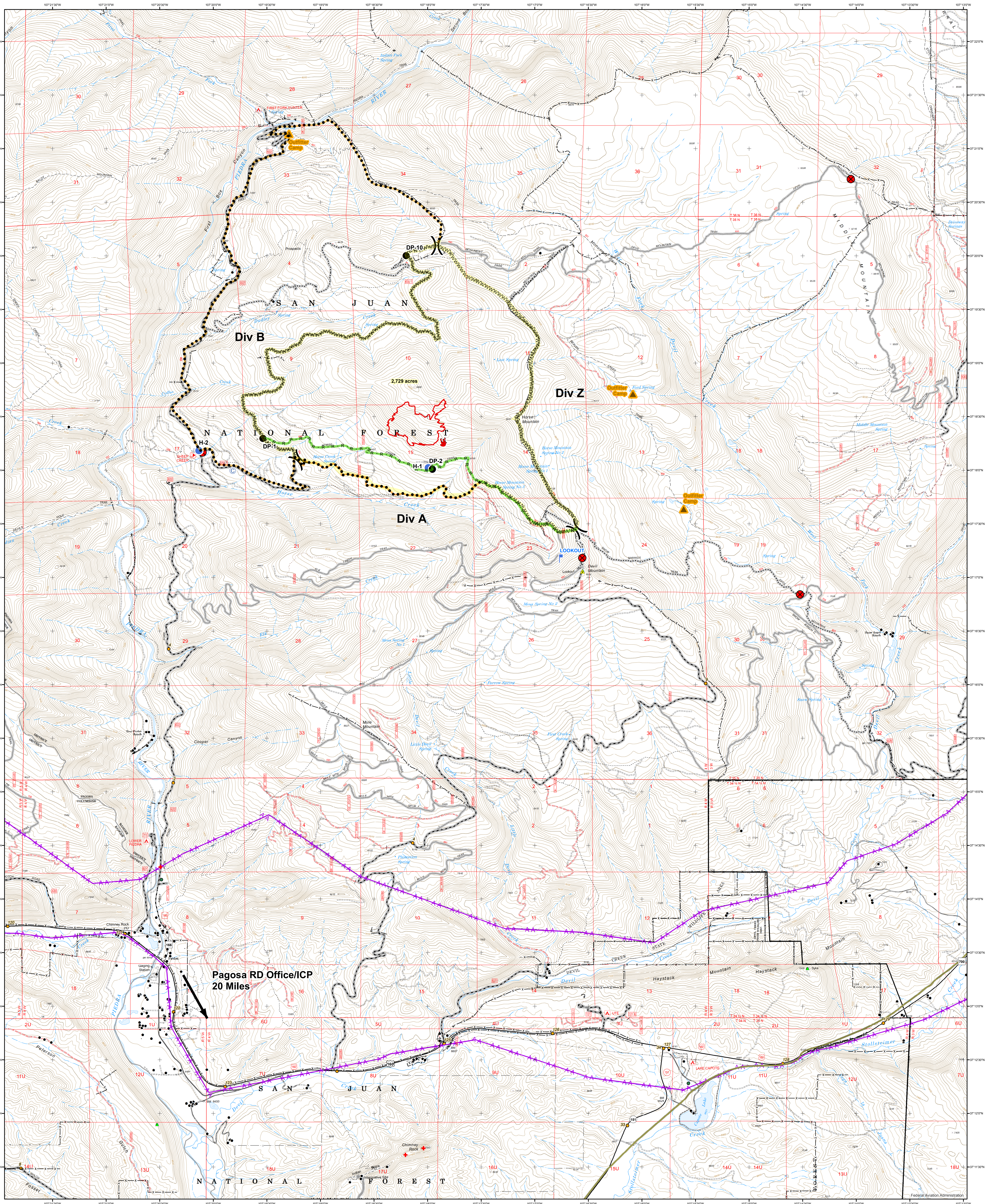


# Horse Fire - Situation Unit Map

August 31, 2018

Incident 1196 - P2Eku7



|   |   |  |   |
|---|---|--|---|
| <ul style="list-style-type: none"> <li> Planned Perimeter</li> <li> Primary Line - Road</li> <li> Secondary Perimeter</li> <li> Fire Origin</li> <li> Perimeter - MMA Flight Aug 30, 2018 1946</li> <li> Lookout Point</li> <li> Drop Point (DP-#)</li> <li> Helispot (H-#)</li> <li> Closure Point</li> <li> Spike Camp</li> <li> Outfitter Camp</li> <li> Division Break</li> </ul> | <ul style="list-style-type: none"> <li> Structure</li> <li> FENCE</li> <li> Natural Gas Transmission</li> <li><b>Aerial Hazards</b></li> <li> Helispot</li> <li> Telecommunication Site - Agency</li> <li> Comm Site</li> <li> Aerial Hazards pt</li> <li> Single Obstructions (&gt;= 1000 Ft AGL)</li> <li> Group Obstructions (&gt;= 1000 Ft AGL)</li> <li> Single Obstructions (&lt; 1000 Ft AGL)</li> <li> Group Obstructions (&lt; 1000 Ft AGL)</li> <li> Electric Transmission</li> </ul> | <ul style="list-style-type: none"> <li><b>System Road - MVUM</b></li> <li> 1 Roads Open to All Vehicles, Yearlong</li> <li> 2 Roads Open to All Vehicles, Seasonal</li> <li> 4 Roads Open to Highway Legal Vehicles Only, Seasonal</li> <li> 14 State or US Highway</li> <li> 15 Other Public Roads</li> <li> Closed System Road - EDW Published</li> <li><b>System Trail - MVUM</b></li> <li> 10 Trails Open to Motorcycles Only, Seasonal</li> <li> 17 Trails Open to Wheeled Vehicles Only &lt; 50' or Less in Width, Seasonal</li> </ul> | <p>0 0.5 1 2 Miles</p> <p>N</p> <p>NAD 1983<br/>Geographic Coordinate System</p> <p>Prepared by: KD Tutten<br/>August 31, 2018 1645 hrs</p> |
|---|---|--|---|