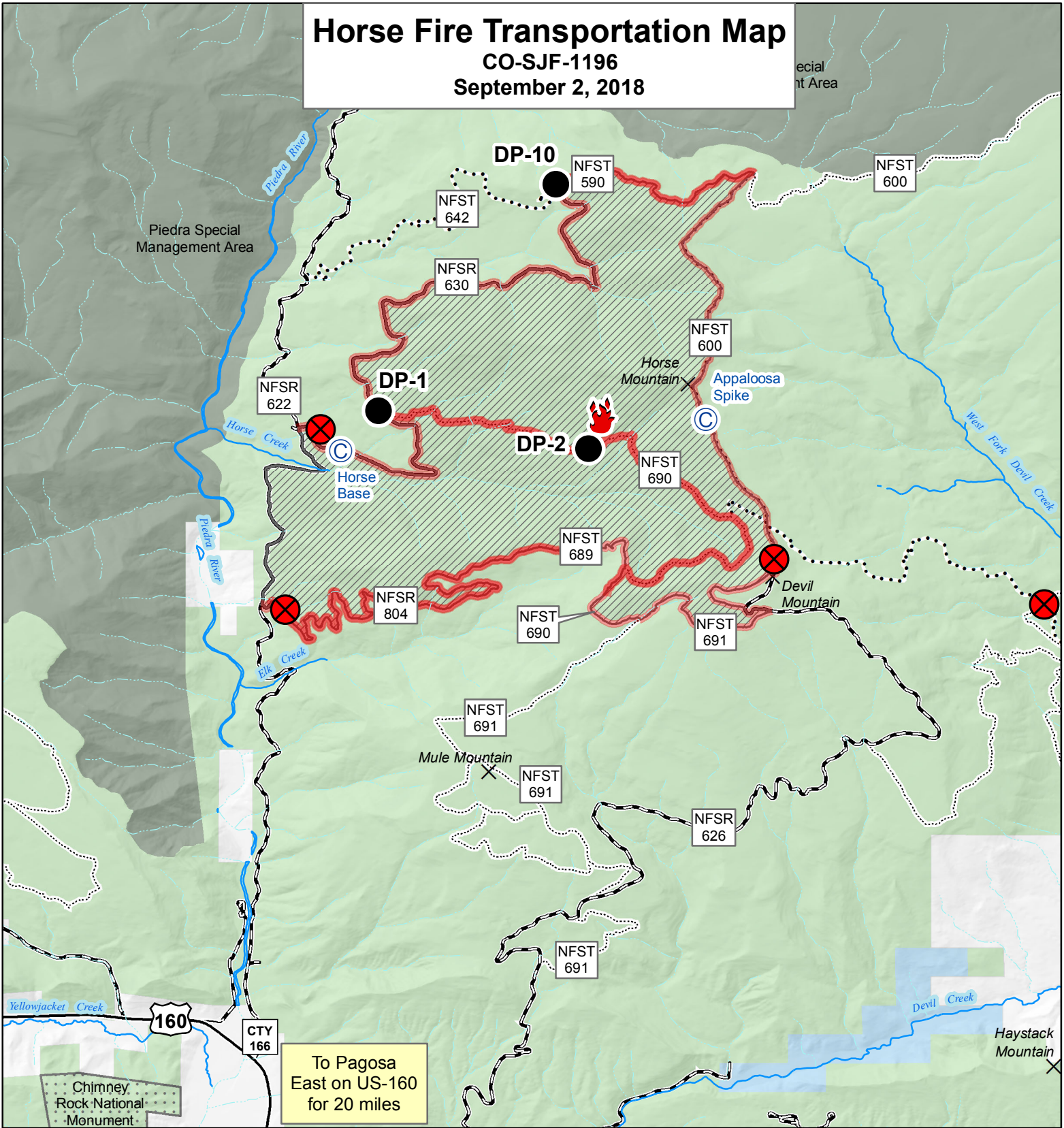


Horse Fire Transportation Map

CO-SJF-1196
September 2, 2018

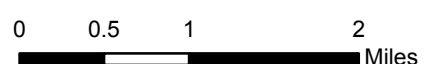
Special
Management Area



To Pagosa
East on US-160
for 20 miles

- Fire Origin
- Closure Point
- Closure Area
- Closed Route
- Drop Point (DP-#)
- Spike Camp
- State or US Highway
- Other Public Roads
- National Forest System Roads Open to All Vehicles
- Trails Open to Motorcycles Only
- Trails Open to Wheeled Vehicles Only < 50" or Less in Width
- National Forest
- Private Lands
- Colorado State

- Wilderness (and Piedra Area)
- Other National Designated Area



NAD 1983
Geographic Coordinate System
Prepared by: K.D. Tuten
9/2/2018, 3:29:12 PM