

## INFRARED INTERPRETER'S DAILY LOG

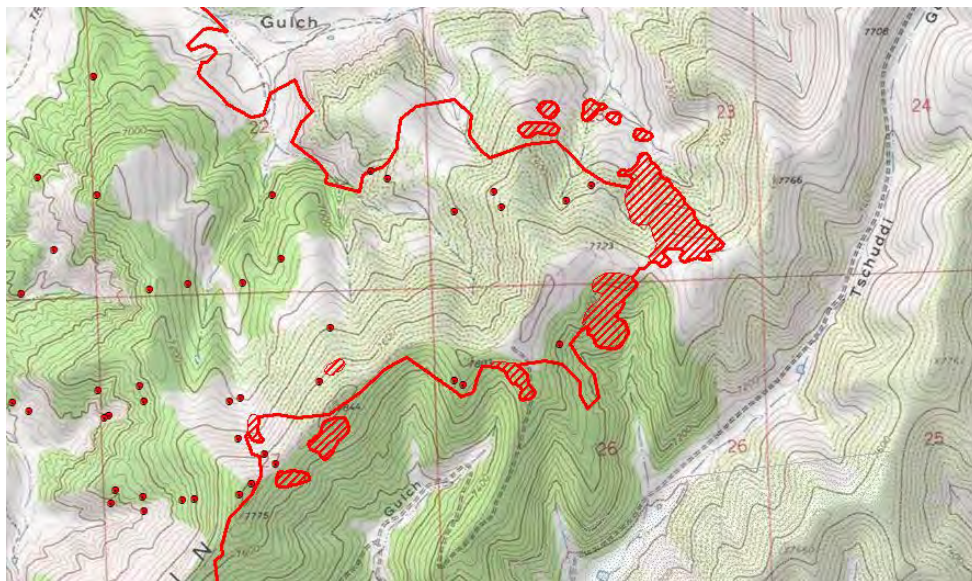
<b>Incident Name:</b> Indian Valley CO-WRD-000319	<b>IR Interpreter(s):</b> Tammy Hocut thocut@fs.fed.us	<b>Local Dispatch Phone:</b> Craig 970-826-5037	<b>Interpreted Size:</b> 5,444 Acres <b>Growth:</b> 59 Acres
<b>Flight Time:</b> 2136 (MDT) <b>Flight Date:</b> 07/24/2018	<b>Interpreter(s) location:</b> Jasper, AR <b>Interpreter(s) Phone:</b> 870-446-5878 (landline) 870-365-2810 (cell)	<b>GACC IR Liaison:</b> Elise Bowne <b>GACC IR Liaison Phone:</b> 303-517-7510	<b>National Coordinator:</b> Tom Mellin <b>National Coord. Phone:</b> 505-301-8167
<b>Ordered By:</b> SWA IMT5 Tara Umphries: SITL 720-618-2543 tumphries@firenet.gov	<b>A Number:</b> A-53	<b>Aircraft/Scanner System:</b> N144Z / Phoenix	<b>Pilots/Techs:</b> Johnson & Netcher / Bob Brantlinger & Mike Mann
<b>IRIN Comments on imagery:</b> 1 pass, Ortho and Color flown in an east-west direction.		<b>Weather at time of flight:</b> Some light cloud cover mainly on west side of fire.	<b>Flight Objective:</b> Identify and map Heat perimeter, Scattered Heat and Isolated Heat Sources.
<b>Date and Time Imagery Received by Interpreter:</b> 07/24/2018 – 2155 (MDT)		<b>Type of media for final product:</b> Shape files, KMZ, PDF, and IRIN Log	
<b>Date and Time Products Delivered to Incident:</b> 07/24/2018 – 2250 (MDT)		<b>Digital files sent to: NIFC FTP @</b> <a href="https://ftp.nifc.gov/public/incident_specific_data/rocky_mtn/2018/IndianValley/IR/20180725/">https://ftp.nifc.gov/public/incident_specific_data/rocky_mtn/2018/IndianValley/IR/20180725/</a>	

**Comments /notes on tonight's mission and this interpretation:**

Started interpretation from fire perimeter pulled from WFDSS with starting acres 5,385. New heat perimeter acres is 5,444 – growth of 59 acres.

There was light cloud cover over the fire – mostly on the west side of the fire.

The areas of growth were on the east side of the fire between Middle Tschuddi Gulch in section 27 and Ted's Gulch in section 23. Some of the growth was new intense heat islands outside the main fire perimeter.



# INFRARED INTERPRETER'S DAILY LOG

The rest of the fire had mostly light scattered isolated heat sources.

