

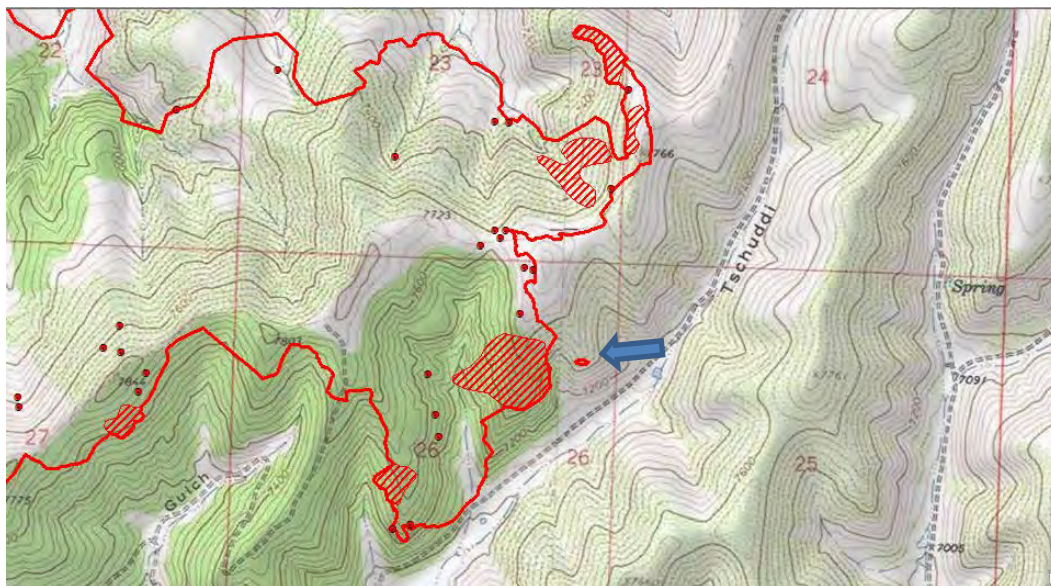
## INFRARED INTERPRETER'S DAILY LOG

<b>Incident Name:</b> Indian Valley CO-WRD-000319	<b>IR Interpreter(s):</b> Tammy Hocut thocut@fs.fed.us	<b>Local Dispatch Phone:</b> Craig 970-826-5037	<b>Interpreted Size:</b> 5,707 Acres <b>Growth:</b> 263 Acres (Since last IR flight on 7/25)
<b>Flight Time:</b> 0246 (MDT) <b>Flight Date:</b> 07/27/2018	<b>Interpreter(s) location:</b> Jasper, AR <b>Interpreter(s) Phone:</b> 870-446-5878 (landline) 870-365-2810 (cell)	<b>GACC IR Liaison:</b> Elise Bowne <b>GACC IR Liaison Phone:</b> 303-517-7510	<b>National Coordinator:</b> Tom Mellin <b>National Coord. Phone:</b> 505-301-8167
<b>Ordered By:</b> SWA IMT5 Tara Umphries: SITL 720-618-2543 tumphries@firenet.gov	<b>A Number:</b> A-70	<b>Aircraft/Scanner System:</b> N144Z / Phoenix	<b>Pilots/Techs:</b> Johnson & Netcher Mike Mann
<b>IRIN Comments on imagery:</b> 1 pass, Ortho and Color flown in an east-west direction.		<b>Weather at time of flight:</b> Some light cloud cover mainly on west side of fire.	<b>Flight Objective:</b> Identify and map Heat perimeter, Scattered Heat and Isolated Heat Sources.
<b>Date and Time Imagery Received by Interpreter:</b> 07/27/2018 – 0306 (MDT)		<b>Type of media for final product:</b> Shape files, KMZ, PDF, and IRIN Log	
<b>Date and Time Products Delivered to Incident:</b> 07/27/2018 – 0435 (MDT)		<b>Digital files sent to: NIFC FTP @</b> <a href="https://ftp.nifc.gov/public/incident_specific_data/rocky_mtn/2018/IndianValley/IR/20180727/">https://ftp.nifc.gov/public/incident_specific_data/rocky_mtn/2018/IndianValley/IR/20180727/</a>	

**Comments /notes on tonight's mission and this interpretation:**

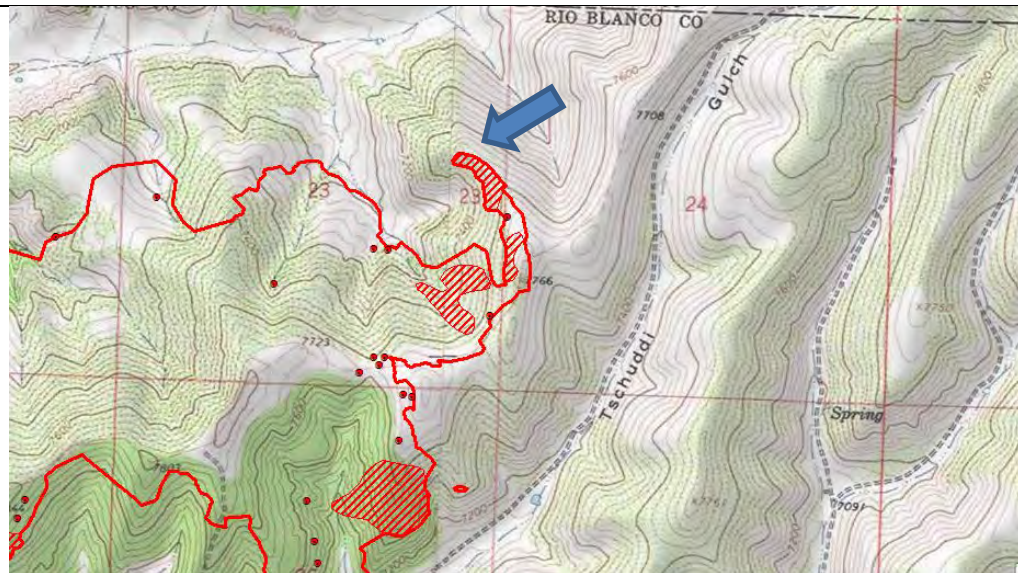
Started IR interpretation from updated fire perimeter provided by the incident.

There was some growth on the east side of the fire in a few locations. In section 26 there was 2 small areas of growth with some intense heat and a heat polygon outside the main fire perimeter.



There was also some growth on the north east side of the fire in section 23.

# INFRARED INTERPRETER'S DAILY LOG



The rest of the fire had a light amount of isolated heat sources.

